



Lower Makefield Township Parks and Recreation

Pathway to Zero Waste

Lower Makefield Township
Parks and Recreation Department
Pathway to Zero Waste

Prepared By:
Monica Tierney MBA, MEd, CPRE
Director of Parks and Recreation

Lynn Todd, CPRP
Operations Manager

Caitlin “Cat” Adams
The Pool at LMT Manager

Linda Salvati
Environmental Advisory Council Chair

Recommended By:
Environment Advisory Council: November 7, 2022 Parks
and Recreation Advisory Board: November 8, 2022

Approved by:
Board of Supervisors: December 11, 2022

Contents

1.0 About This Document.....	4
2.0 History	4
Current EAC Projects	6
3.0 Identifying a Baseline	7
4.0 Key Components and Implementation.....	8
5.0 Barriers:.....	10
6.0 Measurables:	11
Appendix A: Helpful Links	13
Appendix B: Dumpster Inventory	14
Appendix C: Receptacle Audit	15
Appendix D: Recreational Facilities and Amenities List.....	17
Identifying Facility and Park Classification.....	17
Facilities.....	18
Community Park	18
Community Pool Complex with parking (Seasonal)	19
Building Number 1 – Pool Office/Restrooms/Pump House/Mechanicals – Constructed in 1981.....	20
Building Number 2 – Pool Bathrooms & Snack Bar – Constructed in 1981.....	20
Building Number 3 – Pool Bathrooms at Lap Pool – Constructed in 1995	21
Kids Kingdom Playground.....	21
Building 1: Pavilion at Kids Kingdom.....	21
Building 2: Restroom at Kids Kingdom	22
Building Number 3 – Stone Storage Building Adjacent to Kids Kingdom (24’x52’	22
Community Center.....	22
Lower Makefield Township Athletic Complex (Seasonal March 1-November 1).....	26
Greg Caiola Baseball Park (Part of the Samost Tract plot of land)	27
Robert Stoddart Fields	27
Building 2 – Robert Stoddart Fields Concession Stand, Restrooms, Pavilion – Edgewood Road	27
Fred Allan Softball Complex (Seasonal March 1-November 1).....	28
Building 1 – Fred Allan Softball Complex Concession Stand, Restrooms, Pavilion	29
Pavilion at Fred Allan Softball Complex	30
Macclesfield Park	31
Building 1 – Restrooms and Concession Stand	33

Pavilion at Fields C & D..... 34

Pavilion at Fields J & K..... 34

Memorial Park 35

 Garden of Reflection 9-11 Memorial..... 36

 Building 1 – Wood Frame Restrooms and Pavilion..... 40

 Building 2 – Stone Springhouse..... 40

 Secret Garden Playground 41

Five Mile Woods Nature Preserve Office and House..... 42

 Building 1 –Nature Center Office & Restrooms..... 43

 Building 2 – Stucco Georgian Farmhouse (Leased with renters) 43

 5 Mile Woods Trail System 44

LMT Bike Paths..... 45

Dog Park 46

Veterans Square 47

Heacock Meadows 48

 Heacock Meadows Tennis Courts / Open Space 48

 Heacock Meadows Basketball Court / Open Space..... 49

Peake Farm..... 50

 Revere Tennis Courts - Yardley Hunt..... 51

 Yardley Hunt Recreation Center 2..... 52

Matrix Property..... 53

1.0 About This Document

This Plan will allow Lower Makefield Township Parks and Recreation Department (Department) to promote environmental sustainability throughout the Township. The Department along with the Environmental Advisory Council (EAC) developed this plan to better use our public land and resources while eliminating as much waste from our landfills as possible.

The plan will:

- Identify opportunities for waste reduction within our parks.
- Create a plan that will empower park users to participate in social responsibility through personal waste reduction.
- Provide a schedule for taking the steps necessary to achieve compliance.
- Provide opportunities for reallocation of Township Resources.
- Provide a marketing and education plan for implementation.

2.0 History

PA Act 97 1980 provided for planning and regulation of solid waste storage, collection, transportation, processing, treatment, and disposal. This Act also authorized the Pennsylvania Department of Environmental Protection Environmental Quality Board to adopt rules, regulations, standards, and procedures to implement this Act.

The PA Municipal Waste Planning, Recycling and Reduction Act passed by the PA General Assembly in 1988, otherwise known as Act 101, imposed responsibilities upon local municipalities in the area of Solid Waste planning, resource recovery and recycling. In response, the Township passed Resolution No. 804 in 1992 to establish a Solid Waste Committee. This Committee was formed because a regional committee in the Newtown/Makefield area was disbanded. The Solid Waste Committee was charged with the responsibility of advising the Board of Supervisors as to matters related to the Management and control of solid waste and municipal waste within the Township of Lower Makefield.

In 1988 the Public Works Department started collecting leaves curbside from every residential property in the Township. This popular program generated over 3055 cubic yards of leaves in 2020 alone. All of this material has been saved from entering landfills/incinerators. The material is then hauled either to the Township owned Patterson Farm on Mirror Lake Road or to Britton Industries in Morrisville. The material at the Patterson Farm is processed with the Township tub grinder and is then spread on the farm fields. Additionally, it is made available for residential use free of charge on a first come first serve basis starting in April. There is no leaf pick up during the winter months.

Yard waste collection started around the same time; this program runs from spring through early fall. Throughout the year, the yard waste material is processed on site with the Township tub grinder to create a wood mulch product. Like the leaves, this material is available for residential use, free of charge. Any leftover material not used by residents is taken to a local contractor to be made into various mulch products. In 2020 this program resulted in 3100 cubic yards of yard waste that did not enter a landfill. Yard waste collection continues to this day and can be dropped off behind the Municipal Building located at 1100 Edgewood Road Yardley Pa. There is a schedule for drop off that is approved annually and available at <https://www.lmt.org/municipal-services/recycle-yard/> .

In 1989 a Recycling Ordinance No. 237 was adopted by the Board of Supervisors which can be found in the LMT Code Book Chapter 172. Code 172-4 specifically outlines the municipal recycling program and Code 172-9 highlights a guideline for a public education program.

In 1993 the Board of Supervisors approved Ordinance No. 281 and Resolution No. 859 that established requirements for the collection of recyclable materials, established licensing for trash collectors and provided control for waste flow.

In 1994 the EAC was formed through Resolution No. 882 which also established a procedure for the identification and preservation of open space. The EAC's primary function at that time was to explore all options for acquisition and preservation of open space and make recommendations on feasible alternatives for acquisition and preservation.

In 2000 the Solid Waste Committee was dissolved due to lack of participation and the EAC took over oversight of the recycling and reduction of household and municipal waste through Resolution No 1050. The EAC also advises the board on all environmental issues and develops grant proposals for environmental projects and studies consistent with the purpose of the EAC. They also organize and/or sponsor events or programs and publish literature with the approval of the Board of Supervisors to promote public awareness.

In 2006 the EAC's responsibilities expanded even further through Resolution No. 2114 to review all land use plans that come to the Township making sure they follow Township Codes relating to the environment. Since then, they have had a hand in initiating several different ordinances, aided in the creation of the Township Open Space Plan, the LMT Sustainability Action Plan for Cool Cities, and the Tree Planting Plan. The EACs goals go hand in hand with the Parks and Recreation's Mission Statement and often works with the Parks and Recreation Department on several projects.

Current EAC Projects

- *Increasing the amount of Open Space in the Township*
 - *Enacting some of the recommendations in the Cool Cities Sustainability Plan*
 - *Increasing the amount of recycling in the Township*
 - *Implementing and updating the approved Tree Planting Plan*
-

The EAC and Parks and Recreation Department are natural partners, in 2019 the Parks and Recreation Department identified the importance of environmental sustainability as one of the three main pillars of the Parks and Recreation Department's Mission Statement. This updated statement identifies environmental sustainability as one of the most important aspects of the Parks system.

Parks and Recreation

Vision

Play for All

Mission

The Parks and Recreation Department is committed to providing top-notch parks and recreation facilities and services for all residents through three key themes:

HEALTH: Improve physical health, mental health and overall quality of life by offering safe and accessible facilities and open space.

ENVIRONMENT: Act as environmental stewards through responsible use of the natural environment and protect and maintain Parks and Recreation assets.

COMMUNITY: Create opportunities for the community to connect through a wide variety of partnerships, programs, events, and classes.

In keeping with the mission, the Parks and Recreation Department has collaborated with the EAC on several projects. In 2020, the Parks and Recreation Department requested the aid of the EAC to take on creating this recycling initiative. The EAC then took on the task of identifying the current state of recycling within the Parks. Recently in 2022, the EAC was interested in the concept of “carry in, carry out”. The Parks and Recreation Department reached out to other Parks at both the state and municipal level to determine if this is something that would be feasible to incorporate into the Parks system. Together, the Parks and Recreation Department and the EAC developed the document you are reading today.

The Township also has a volunteer Parks and Recreation Advisory Board whose powers and duties are outlined in the Lower Makefield Township Code Book 31-6. The Parks and Recreation Board shall assist the Township Supervisors in planning, laying out and maintaining parks, recreation facilities and programs. The Parks and Recreation Board shall have the full assistance, advice and cooperation from the Township Manager, staff and members of other boards, commissions, and agencies of the Township. The Board shall work whenever possible with local school authorities.

3.0 Identifying a Baseline

To identify the current state of the Parks and Recreation Recycling Program, the EAC elected to send members out into the Parks to assess how many trash and recycling receptacles were in each park, what they looked like, and if they were labeled. In addition, the EAC identified that we do not have composting stations within the Parks. This was not part of the initial assessment, but we will note it as part of this report as something to address in the future. The Parks and Recreation Department expanded this Assessment by taking counts and adding information about trash and recycling dumpsters at the Community Center. The consolidated report can be found in the Appendix of this document.

The baseline report provides very grim findings for all outdoor facilities in Lower Makefield Township. This is because there is a 5.6 to 1 trash can to recycling receptacle ratio, many unlabeled receptacles, and the receptacles were in all different shapes and sizes.

This initially led to a recycle plan that would include a very large infrastructure change, laying out a plan to add recycling to each waste receptacle within the Township at a great cost. Keeping the Parks and Recreation Mission in mind to act as environmental stewards through responsible use of the natural environment and protect and maintain Parks and Recreation assets. It was important to entertain a plan that was not only environmentally friendly but an economically responsible use of Township assets.

The concept of carry in, carry out resolves several issues and concerns with the original recycle plan. The cost of implementation was going to be very high, there would be a high use of staff time sorting and removing recycle, and if recycle is contaminated it could end up in the landfill.

4.0 Key Components and Implementation

It is anticipated that this program will evolve and grow with time, therefore this document is called pathway way rather than zero waste plan. Over the first few years this this program will be heavily reviewed and evaluated with annual reports expected as part of the Parks and Recreation Report that is published each August.

Below there are a list of key components that will assist with getting started along this path toward waste reduction in the Lower Makefield Township Parks System. The first year will consist of much education focusing on passive parks rather than Active Parks. There will be a year of education time prior to implementation to Athletic Complexes (Macclesfield Park, Fred Allan Softball Complex, and the Lower Makefield Township Athletic Complex-Caiola and Stoddart Baseball fields). After the first year of implementation further discussion will determine how to address the pool as a membership facility within the first three years.

Short Term:

Education and Marketing

For this program the Township will use the slogan *“Do your part, protect our parks.”* The concept is self-awareness and social responsibility for protection of your environment. While this may have wider meaning in the future to incorporate additional sustainability measures, this is one way the Township residents and park users can help reduce costs in the parks and be an active participant in reducing overall waste within the parks system. This will be a full marketing push using social media, personal communication through email, and phone and other media outlets to get the word out about the shift in the way we are using out parks. Signage will be required at all parks, and we will also provide programing that incorporates this message. The Township staff will adjust the Parks and Recreation Marketing and Community Relations Plan to further implement this plan.

Annual Community Engagement and Volunteer Opportunities

Understanding that the Township is undertaking a new concept, two clean up days will be added to the volunteer calendar. The Township will use signup genius to encourage groups of people to adopt a park to clean up. One day in early spring and one day in early fall will be designated to this project.

Partnerships and Community Outreach

The Parks and Recreation Department will partner with outside agencies for grants, sponsorship, and education for this program as the Township moves forward. It will also be imperative to partner with park user groups in a way that is meaningful to the mission of this program. Continuous communication with the user groups as outlined in the Marketing and Community Outreach Plan is imperative to the success of this plan.

Parks System: Cary In – Carry Out

Park users will be encouraged through signage to be responsible for any waste they bring into the facility. Most parks will go to a strictly carry in - carry out model meaning that waste receptacles will be removed from the facility. Park users will instead remove their personal waste and be encouraged to practice recycling in their everyday lives. This program will not only be

environmentally responsible, but it will also allow the Department to reallocate staff resources towards other projects.

While this is feasible in most facilities, the Parks and Recreation Department recognizes that each site has unique features and users which may make a total removal of receptacles inconvenient. The Parks and Recreation Department has identified specific sites which will move to a reduction in waste receptacles.

It is also important to note that long term goals may evolve with time in order to make a larger impact on waste reduction within the parks.

Waste Receptacles

While carry in - carry out is an ideal approach to waste within the parks, the Township will still offer waste receptacles in very key areas. Waste receptacles will only be located at basketball courts, concessions, bathrooms, indoor facilities, and the Pool. In the instance that a waste receptacle is on sight a recycle container should accompany the receptacle.

Recycle Bins: To minimize waste each trash bin will be paired with a second waste bin that will be used for recycling. Bins can be painted as a community project as the Township prepares to launch the pathway to zero waste.

Proposed Waste Stations:

As part of this project there will be a significant change in the way we think about waste. We will be changing from the concept of trash vs recycling to the idea of waste stations. A waste station will be a trash receptacle paired with a recycling bin. Prior to this program the baseline in the parks was 111 trash and 20 recycle bins. With the transition into carry in and carry out the parks will consist of 36 waste stations in all.

Year One (2023)

Location	Current			Pathway to Zero Waste Plan		
	Trash Receptacles	Recycling Bins	Dog Waste	Dog Waste	Bathroom Trash Waste Only	Projected Waste Station Stations
5 Mile Woods	2	0	0	0	2	0
Community Center	1	0	0	0	0	0
Community Park	11	0	0	0	2	2
Dog Park	2	0	10	10		2
Heacock Meadows	1	0	0	0	0	0
Matrix Property	0	0	1	0	0	0
Memorial Park	11	0	0	0	2	3
Peak Farm	0	0	0	0	0	0
Schuyler Tennis	1	0	0	0	0	1
Veterans Square	1	1	0	0	0	0
Yardley Hunt	1	0	0	0	0	0

Year 2 (2024)						
	Current			Pathway to Zero Waste Plan		
Fred Allen Softball Fields	7	1	0	0	2	1
Lower Makefield Township Athletic Complex	7	1	0	0	2	1
Macclesfield Park	48	17	0	0	2	8
The Pool Complex	18	0	0	0	?	?

Long Term:

Addition of Hydration Stations Throughout the Park System

Hydration stations are a great way to reduce the use of disposable bottles, which in turn would provide an opportunity to reduce overall waste within the parks system. While reviewing any infrastructure changes, hydration stations should be considered.

5.0 Barriers

Education: Residents are used to waste receptacles within the parks, it will take some time to fully embrace this change and the Township may receive negative feedback in the early stages of this implementation. Community and staff buy in is imperative to the success of this project and it may take time for full implementation.

Contamination Charges: This is a per occurrence charge that applies when contaminants such as food or liquids are included in a recycling receptacle at time of pickup. This is a more recent practice by waste disposal companies to deter customers from placing contaminants into their recyclables.

This practice started in the US when China banned imports of key curbside recyclables in 2017. This created a chain reaction forcing US exporters with a stockpile of recyclables and brokers began taking less material.

Waste companies remove several tons of non-recyclable waste from recycle centers annually and ship the material to landfills. This, in addition to non-recyclables getting tangled and damaging equipment, has become costly for many companies.

Acceptable

- Glass bottles and jars, but not broken dishware.
- Plastic bottles and containers, with No. 1 - 6 on the bottom.
- Food and drink cans, lightly rinsed to avoid leaking onto other items.
- Paper, paper cartons, flat cardboard and newspapers/magazines.

Not acceptable:

- No food-soiled paper waxed cardboard containers.
- No plastic bags.
- No cords, wires or hoses.

- No dishes.
- No food wrappers.
- No appliances, electronics or batteries.
- No yard clippings or grass.
- No Styrofoam.
- No diapers or animal waste.
- No clothes.
- No hazardous or medical waste.

This is a barrier in the Parks because the recycling dumpsters are not monitored, and fees will continue to be assessed as people put contaminants in recycle dumpsters without thinking of potential costs to the Township. The fees will continue to grow over time considering how many dumpsters are located within the Parks System. The carry in, carry out plan addresses this barrier by removing or reducing waste receptacles that may become contaminated by mass use. The plan encourages a more effective approach to promote recycling by encouraging individual users to practice recycling at home and in their everyday lives.

6.0 Measurables:

Both quantitative and qualitative methods will be used to determine the effectiveness of methods used to evaluate this plan. This plan will be reviewed annually for a period of three years on the third year the Township will determine whether this program will continue and is effective based on these outcomes.

These methods include:

- Asking for direct feedback from community members.
- Reviewing staff outcomes.
- Utilizing the registration software, the department will monitor the number of registrations for specific programs to help gauge community interest.
- Sending follow-up emails to active community members to provide feedback on programming and services offered by the department.

Qualitative Evaluation

Qualitative evaluation measures the quality of the Pathway to Zero waste to determine successfulness of the program, through general feedback from residents, participants, providers, and staff this can be done through surveys, email, phone or in person conversations. To measure our marketing, we will be asking waste and service specific questions on the phone, during registration and after events.

Quantitative Evaluation

Quantitative Evaluation is numerical measure of the pathway to zero waste programs. We will be using registration reports and analytics to measure success of a campaign.

The measures we will use for this is staff time, waste removal cost reduction in waste removal and social media analytics on the education information sent out about the program.

Appendix A: Helpful Links

[Lower Makefield Township Maintenance Plan](#)

[Marketing and Community Outreach Plan](#)

United States Environmental Protection Agency Recycling FAQ: <https://www.epa.gov/recycle/frequent-questions-recycling>

Waste Management Recycling 101: <https://www.wm.com/us/en/recycle-right/recycling-101>

NUDGING

Nudges to increase recycling and reduce waste <https://core.ac.uk/download/pdf/285987303.pdf>

Nudging and pro-environmental behavior <https://norden.diva-portal.org/smash/get/diva2:1065958/FULLTEXT01.pdf>

Appendix B: Dumpster Inventory

Dumpster Inventory

Location	Trash Dumpster	Recycle Materials Dumpster
Township Building 1100 Edgewood Road	4 yards 6 yards	6 yards
Fred Allan Softball 1500 Oxford Valley Road	6 yards	2 yards
Macclesfield Park 1000 River Road	6 yards	2 yards
Pool Complex 1050 Edgewood Road	6 yards 2 yards	
Caiola Sport Complex 1100 Edgewood Road	6 yards	2 yards
Kids Kingdom 1050 Edgewood Road	6 yards	2 yards
Community Center 1550 Oxford Valley Road	4 yards	2 yards

Appendix C: Receptacle Audit

Survey of Trash and Recycling Containers in Lower Makefield Township's Major Parks (October 29, 2021)

Macclesfield Park

Blue Barrels [trash] – 32

Black Barrels [trash] – 11

White Barrel enclosed by metal wiring [trash] – 5 (all in pavilion next to the concessions/restroom building)

Wood-slat containers with tops [recycling] – 17 (2 are behind the southeast maintenance building and are missing tops)

One 6 yd³ trash dumpster, One 2 yd³ recycling dumpster

Memorial Park

White Barrel enclosed by metal wiring [trash] – 6 (2 by Secret Garden playground/pavilion)

Blue-slats enclosing black barrel [trash] – 4 (2 by Secret Garden playground/pavilion)

Black Barrels [trash] – 1 (by basketball courts)

No recycling containers!

One 4 yd³ trash dumpster, No recycling dumpster!!

Caiola Fields

Blue Barrels [trash] – 3

Black Barrels [trash] – 4

Wood-slat containers with tops [recycling] – 1 (behind concession building, missing top)

One 6 yd³ trash dumpster, One 2 yd³ recycling dumpster

Fred Allen Softball Fields

Blue Barrels [trash] – 5

Black Barrels [trash] – 2

Blue-slat container with top [recycling] – 1 (next to concession building)

One 6 yd³ trash dumpster, One 2 yd³ recycling dumpster

Area Around Pool (not including pool)

Blue Barrels [trash] – 5 (4 near basketball and softball fields)

Blue-slat enclosing black container [trash] – 1 (near Kids Kingdom)

Brown Top Containers, various colored barrels [trash] – 5 (near pavilion)

No recycling containers!

Two 6 yd³ trash dumpster, One 2 yd³ recycling dumpster

Totals

Trash (85)

Blue Barrel containers – 46

Black Barrel containers – 18

Black Barrel enclosed by metal mesh - 2

Blue-slat enclosing black barrel – 4

White Barrel enclosed by metal mesh – 11

Brown containers?? - 3

Recycling (19)

Wood-slat containers with tops – 18 (3 missing tops)

Blue-slat enclosing black barrel – 1

There are only one or two examples of a recycling container being located next to a trash container

EAC, October 2021

Appendix D: Recreational Facilities and Amenities List

Identifying Facility and Park Classification

The parks and facilities located within Lower Makefield Township have been classified based on their usage from light usage to heavy usage. The usage categories will range in color to provide a visual guide to assist the park crew in completing the repairs and maintenance required at each location.

Green: Heavy Usage Facilities



Yellow: Heavy Usage Active Parks



Orange: Lighter Usage Passive Parks



Red: Minimal Maintenance Passive Parks



Facilities

Community Park

Property Name:	Township Complex/Library/Pool/Park
Tax Parcel ID:	20-034-022-002
Street Address:	1080 & 1050 EDGEWOOD RD
Acreage	25.1 Acres (Estimate)
Sales Date:	18-JUN-64
Sales Price	0
Book:	1768
Page:	1135
Estimated Market Value:	\$ 6,684,560



- Community Pool with Parking
- Kids Kingdom Playground
- Pavilion at Kids Kingdom
- Bathrooms
- Stone Storage Facility
- Tennis Courts & Basketball Complex
 - 4 lighted community tennis courts
 - 1 lighted basketball court
- Community Softball Field (lighted)
- Nature Trail
- 260 Parking spaces
- Leagues: Home of the LMT Swim and Dive Team;
- Home of PAA

Community Pool Complex with parking (Seasonal)



- Dedicated 1981
- Paved Parking, 2 lots with 130 spots each, gravel parking is also available. (11 ADA)
- Olympic Sized Community Pool),
 - Slides
 - Curly Slide

- Straight slide
- diving area
 - High Dive
 - 2 Standard Diving Boards
- Intermediate and
- Tot sized pool
- Lap Pool
- Snack bar
- Dual slides
- all pools are heated.
- 2 shade structures
- 1 Pavilion with seating

Building Number 1 – Pool Office/Restrooms/Pump House/Mechanicals – Constructed in 1981



Building Number 2 – Pool Bathrooms & Snack Bar – Constructed in 1981



Building Number 3 – Pool Bathrooms at Lap Pool – Constructed in 1995



Kids Kingdom Playground

- Dedicated in 1992
- Pavilion is available for Residents to reserve for parties



Building 1: Pavilion at Kids Kingdom



Building 2: Restroom at Kids Kingdom



Building Number 3 – Stone Storage Building Adjacent to Kids Kingdom (24'x52')

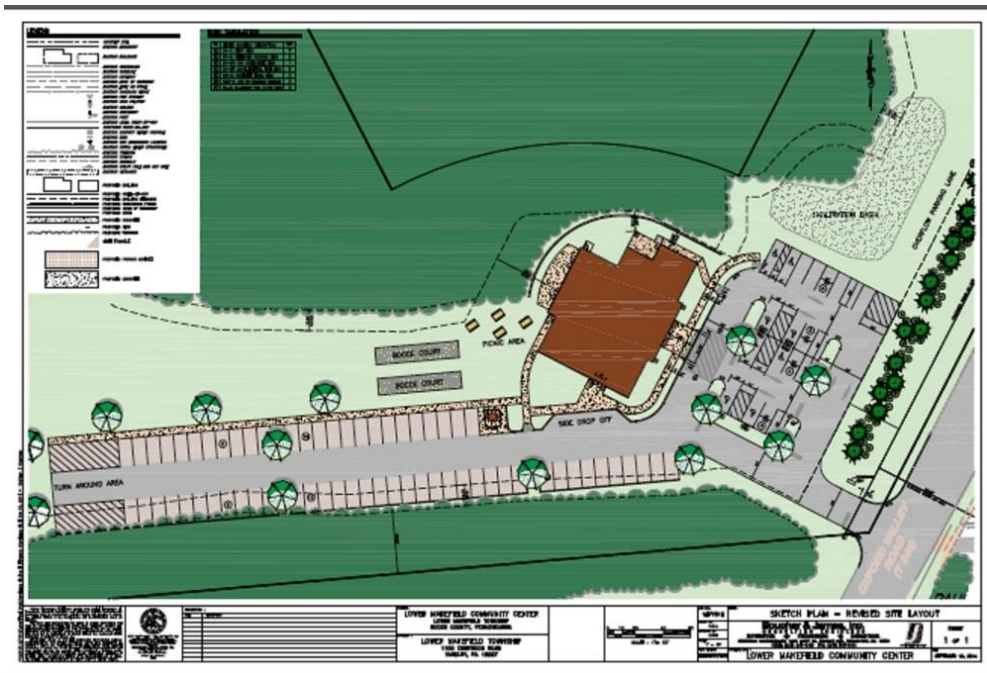


Community Center



12 Acres 1550 Oxford Valley Rd





Opened January 16, 2018 - Dedicated March 12, 2018

- Large multi-purpose room
- 2 Classrooms
- Parks and Recreation Offices
- Small industrial kitchen
- 5,235 square-foot space
- Home of the Lower Makefield Township Seniors
- Home of the Newtown Quilters Guild
- Space available for scheduled programs, scheduled classes, senior programs, camps and lectures



LOWER MAKEFIELD COMMUNITY CENTER

Dark Color White
 Address
 Planning
 Landscape Institute

Lower Makefield Township Athletic Complex (Seasonal March 1-November 1)



36.75 Acres 1103 Edgewood Rd

- Greg Caiola Baseball Park
- Convertible 50/70 field
- Convertible to 40/60 field
- 145 parking spaces plus additional gravel parking available
- Robert P. Stoddard Sports Complex
- 3, 60' foot fields
- Concession Stand
- 2 Sand Volleyball Courts

Leagues: Home of PAA Baseball

Greg Caiola Baseball Park (Part of the Samost Tract plot of land)



Robert Stoddart Fields



Building 2 – Robert Stoddart Fields Concession Stand, Restrooms, Pavilion – Edgewood Road



Fred Allan Softball Complex (Seasonal March 1-November 1)



23 Acres 1500 Oxford Valley Rd

- Dedicated in 1999
- 3 softball fields, dugouts, water on 3 fields, electric on 2 fields
- Batting Cage
- 2 All-weather Bocce Courts
- Tot play pieces
- Picnic area with concession stand
- Restroom facility and covered pavilion with a floor
- Walking trail/bike path
- Approximately 120 paved parking spots
- Underdrains installed on all three fields in 2014



Building 1 – Fred Allan Softball Complex Concession Stand, Restrooms, Pavilion



Pavilion at Fred Allan Softball Complex



Macclesfield Park



Tax Parcel ID	20-045-001 / 20-045-003-001
Street Address	1000 RIVER RD
Acreage:	91.9
Sales Date	12-DEC-86 / 09-JUN-89



12

- Front 60 acres dedicated 1989, rear 30 acres dedicated in 1997
- 8 full size multi-purpose fields (6 lighted) for use as regulation soccer, football and baseball fields, including one all-weather turf field installed by YMS.
- 2, 90' lighted baseball fields
- 1, 75' lighted baseball field
- 4 sand volleyball courts
- 2 mid-sized soccer fields
- 5 mini soccer fields
- Tot lot play area
- Bike path and exercise stations
- Picnic areas and restrooms
- 2 pavilions, a concession stand, maintenance garage
- Access to the canal towpath
- Approximately 600 parking spaces, paved
 - 400 front lot

- 200 rear lot
- Leagues: Home of the Yardley Makefield Soccer, Lower Makefield Football Association, and Pennsbury Athletic Association

Building 1 – Restrooms and Concession Stand



Pavilion at Fields C & D



Pavilion at Fields J & K



Memorial Park

(While we are rating this park a passive park, the Garden of Reflection requires a higher level of maintenance due to the nature of the monument)

Tax Parcel ID: 20-003-027
Street Address 1950 WOODSIDE RD
Acreage: 63.5



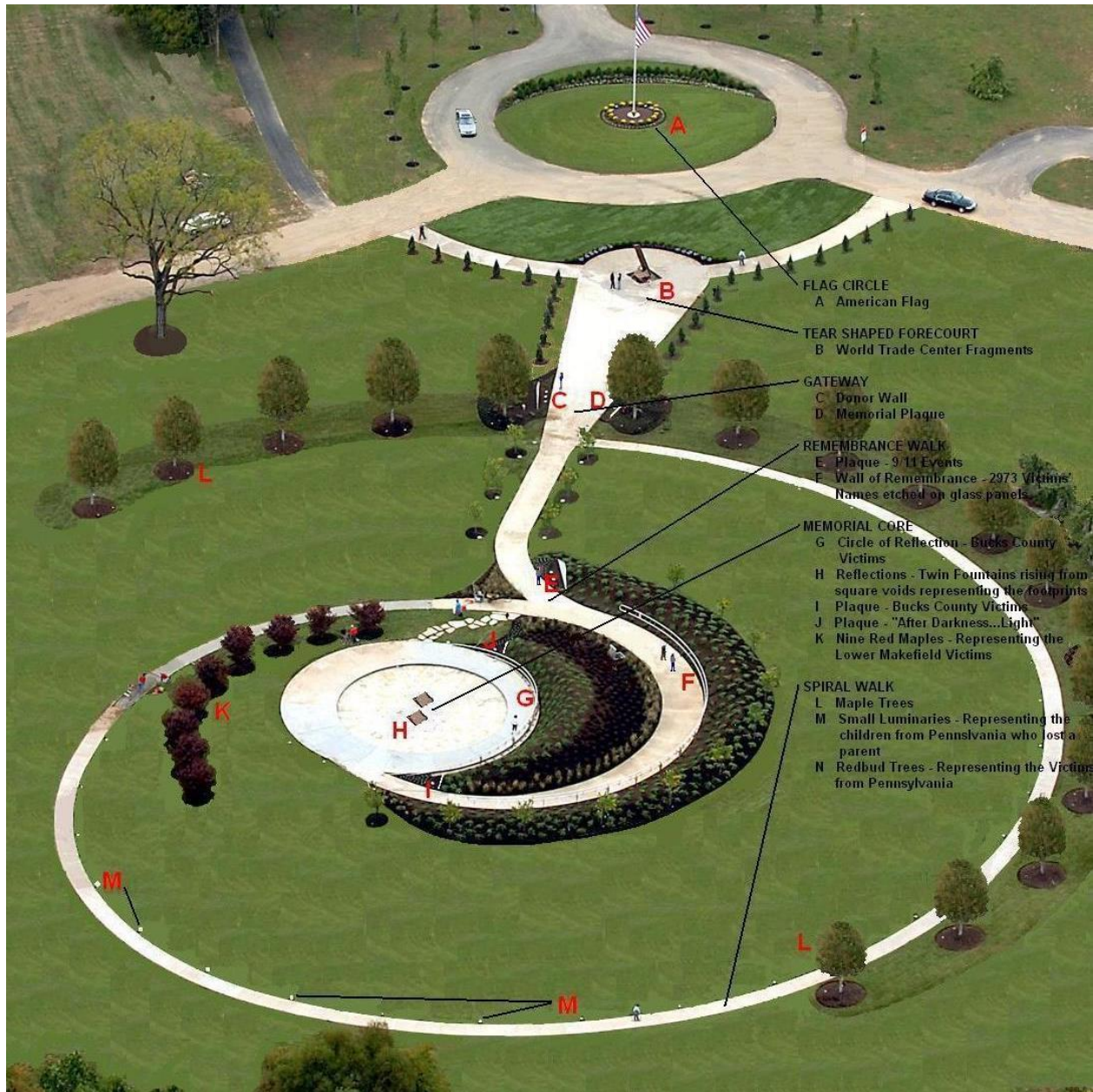
- 9/11 Garden of Reflection
- 2 basketball courts
- 2 sand volleyball courts
- Community Garden Plots
- Restrooms with a covered patio
- 1 skinned softball field
- Secret Garden inclusive playground with ADA parking lot
- Multipurpose field with field goals
- Gaga court
- Pavilion available to rent for LMT Residents
- 1k loop for walking
- Oak Garden with rubberized pervious surface walking path.

Garden of Reflection 9-11 Memorial
Official State Monument for 9-11









- A. American Flag –
- B. World Trade Center Fragments
- C. Gateway – The pathway through *The Garden of Reflection* Gateway is flanked by a pair of 20 feet long stainless-steel interpretative plaques.
- D. Memorial Plaque
- E. Donor Wall
- F. Pathway
- G. Plaque – 9-11 Events
- H. Wall of Remembrance – 2973 Victims’ Names are etched on glass panels held on a stainless-steel curved rail along Remembrance Walk.
- I. Plaque – Bucks County Victims

- J. Twin Fountains
- K. Circle of Reflection – Bucks County Victims’ Names are etched on hand cast glass panels.
- L. Plaque – After Darkness...Light –
- M. Nine Red Maples
- N. Spiral Walk
- O. 17 Maple Trees representing the Bucks County Victims
- P. 42 Small Luminaries symbolizing the 42 children from Pennsylvania who lost a parent.
- Q. 58 Red Bud Trees representing the 58 Victims from Pennsylvania lost in the attacks.

Building 1 – Wood Frame Restrooms and Pavilion



Building 2 – Stone Springhouse



Five Mile Woods Nature Preserve Office and House

Tax Parcel ID: 20-032-046-002
Street Address: 1305 Big Oak Rd.
Acreage: 298 Acres
Sales Date: 17-NOV-80



- Nature center
- Ranger office
- Manor house
- 5 miles of nature trails
- Handicap accessible
- Gravel parking for 50 vehicles

Building 1 –Nature Center Office & Restrooms

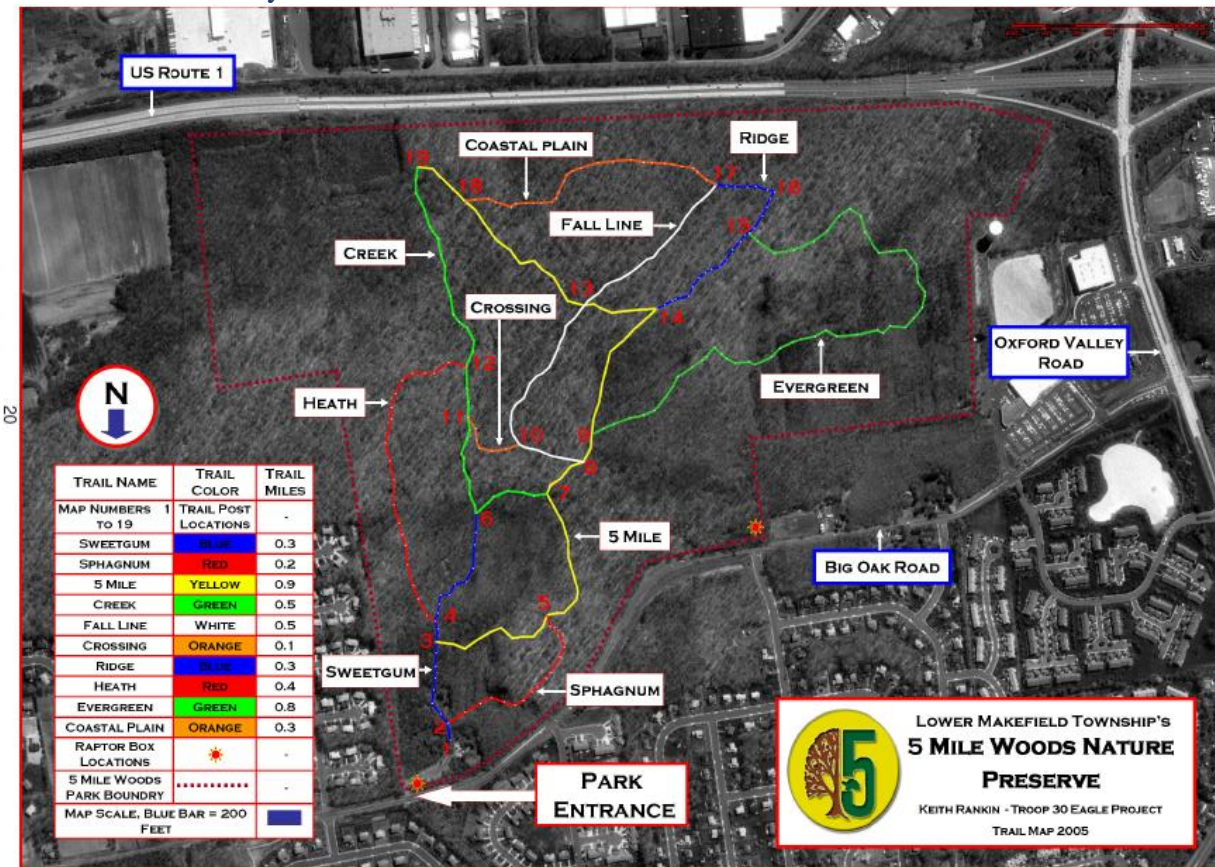


Building 2 – Stucco Georgian Farmhouse (Leased with renters)



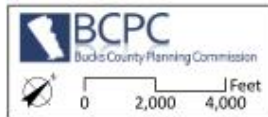
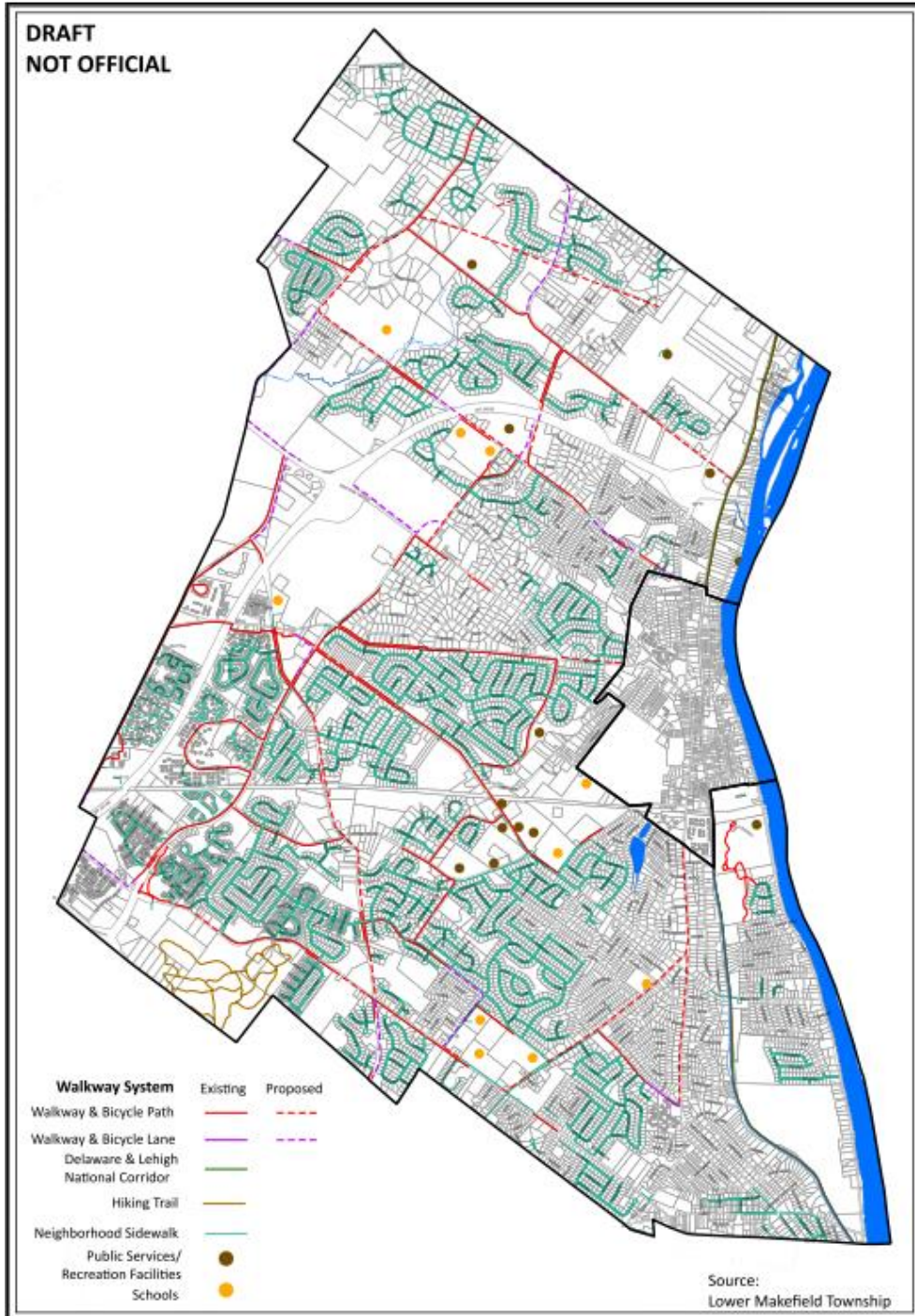


5 Mile Woods Trail System



LMT Bike Paths

25 Miles



**Township of Lower Makefield
Master Plan Update 2019**

**Map 8
Walkway System**

Veterans Square



2.8 Acres 1660 Edgewood Rd

- Veterans Square Monument
- Tot lot play area
- Picnic area with benches
- Gravel Parking area for 50 cars
- Water fountain

Heacock Meadows

8.2 Acres Heacock/Bluebird/Covington

- 4.5 Acres of Heacock Meadows Pocket Parks
- Dedicated 1979
- 1 Tot lot
- Basketball Court
- Tennis Court
- 4 Pickleball courts with portable nets

Home of Lower Makefield Township Pickleball Meetup

Heacock Meadows Tennis Courts / Open Space



Heacock Meadows Basketball Court / Open Space



Peake Farm

Tax Parcel ID: 20-065-309
Street Address: TWIG LN
Acreage: 1.686 Acres
Sales Date: 20-JUN-17

- Tot lot playground



Yardley Hunt



3.1 Acres Revere/Schulyer

Revere Tennis Courts - Yardley Hunt

- Schuyler Drive: 4 dedicated tennis courts
- Revere: 3 tennis/ pickle ball courts
- Paved parking areas approximately 12 vehicles at each location

League: Home of Yardley Makefield Tennis

Revere Tennis Courts - Yardley Hunt



Yardley Hunt Recreation Center 2



Matrix Property



5 Acres

Purchase Date: 7/2/2020

- Walking Trail
- Benches

