

# Photographic Inventory & Simulations

Proposed Field Lighting

Site Name: Lower Makefield Township - Snipes Tract

Lower Makefield Township, Bucks County  
Quarry Road, Yardley, PA 19067

May 16, 2018

Prepared For:



Prepared By:



2103 East High Street, Suite 200  
Pottstown, PA 19464  
610-323-8752



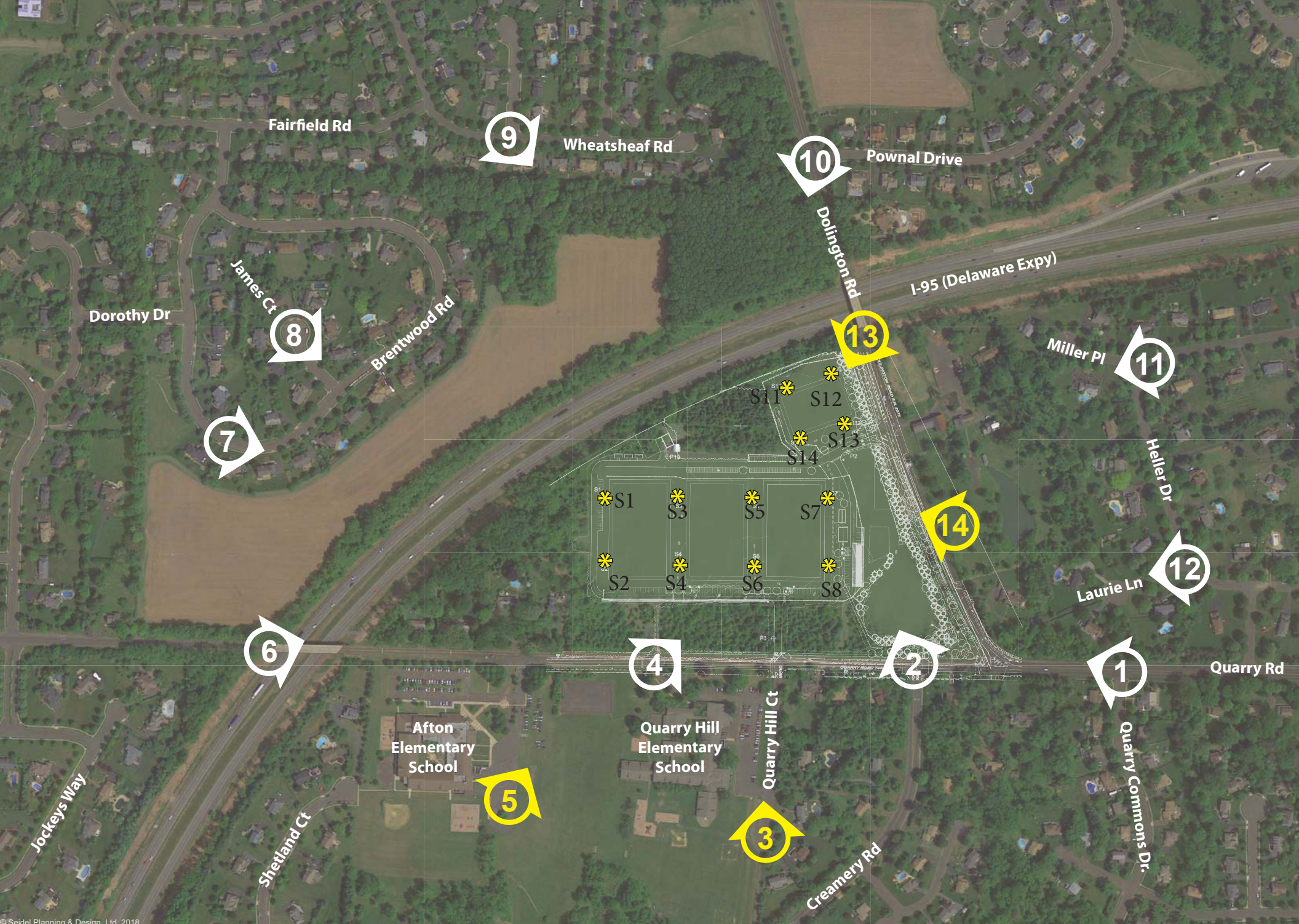
## Project Summary:

On Wednesday, May 9, 2018, a balloon test was conducted at the project site located at Quarry Road, Lower Makefield Township, PA. To conduct the balloon test, Seidel Planning & Design, Ltd. visited the location of the proposed athletic fields. Ten (10) red balloons were inflated with helium. Two (2) 36-inch balloons were tethered to the ground and flown to a height of 150-feet above grade with balloons on the same lines flown to a height of 80-feet and 70-feet above grade. Two (2) additional lines were flown with balloons at a height 80-feet and 70-feet above grade. The purpose of the smaller balloons are to develop a scale by providing a 10-foot difference between the balloons and mark the proposed light standard elevation to be utilized in the preparation of future photographic simulations. The purpose of the larger 36-inch balloons are to identify the location of the lights in areas where the 80-foot and 70-foot balloons were obscured. The balloons were released into the sky at 7:30am removed at 10:00am the same day. The balloon lines were flown at the proposed location of the light standards and rotated around the site based on the location of the camera to the nearest light standards.

While the balloons were in flight, a photographic inventory was conducted by obtaining photographs throughout the surrounding community to identify locations where the balloons were and were not visible. Photographs were obtained from public areas such as public roadways.

To conduct an accurate balloon test, clear skies and wind predictions below 8 miles per hour are preferred. Weather conditions during the duration of the investigation were sunny and clear. Winds were very low during the first few hours of the investigation and had virtually no impact on the flight of the balloon. Starting at approximately 8:30am, an occasional wind draft would slightly impact the flight of the balloon. "Calm" winds of under 3.5 miles per hour were recorded by the local weather service in the times of the test, resulting in an accurate balloon test.

At the conclusion of the field investigation and after returning to the office, photographs depicting the balloons were enhanced to insert the image of a LED style light standard on the subject parcel. A key map was also prepared utilizing an aerial photograph and identifying the location where photographs were obtained. The result of the investigation contains the 'Photographic Inventory & Simulations' found on the following pages.



© Seidel Planning & Design, Ltd. 2018

Photographic Key Map - RVE - Snipes Tract



View # 1 - Quarry Rd & Quarry Commons Dr

Existing Conditions (150' Balloon Visible)



View # 2 - Quarry Rd & Creamery Rd

Existing Conditions (150' Balloon Visible)



View # 3 - Quarry Hill Ct

Simulated View (S6 Light Standard Visible)



Obscured Light Locations S3 - S8

View # 4 - Quarry Rd

Existing Conditions (Not Visible)



View # 5 - Afton Elementary School Parking Lot

Simulated View





Obscured Light Locations S1 - S14

View # 6 - Quarry Road (I-95 Overpass)

Existing Conditions (Not Visible)



Obscured Light Locations S1 - S14

View # 7 - Brentwood Rd

Existing Conditions (Not Visible)



Obscured Light Locations S1 - S14

View # 8 - James Ct

Existing Conditions (Not Visible)



View # 9 Wheatsheaf Rd

Existing Conditions (Not Visible)



Obscured Light Locations S1 - S14

View # 10 - Dolington Rd & Pownal Dr

Existing Conditions (Not Visible)



Obscured Light Locations S1 - S14

View # 11 - Heller Dr & Miller Pl

Existing Conditions (Not Visible)



Obscured Light Locations S1 - S14

View # 12 - Heller Dr & Laurie Ln

Existing Conditions (Not Visible)



View # 13 - Dolington Rd (I-95 Overpass)

Simulated View





View # 14 - Dolington Rd

Simulated View