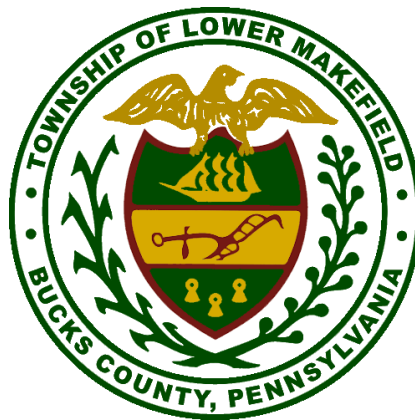
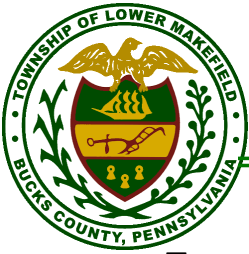


Lower Makefield Township
Parks and Recreation Road Tour
August 2017



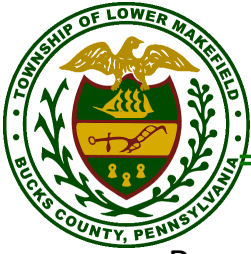
David Gordon, Chair
Patricia Bunn, Vice Chair
Douglas Krauss, Member
Bryan McNamara, Member
David Malinowski, Member
Dennis Wysocki, Member



Township of Lower Makefield

TABLE OF CONTENTS

Recreational Facilities	3
Community Park	3
Fred Allan Softball Complex	9
Macclesfield Park	11
Memorial Park	13
Five Mile Woods	19
LMT Bike Paths	21
Dog Park (In progress)	23
Community Center (In Progress)	25
Snipes Farm (In Progress)	27
Pocket Parks	29
Veterans Square	29
Heacock Meadows	31
Peake Farm	32
Yardley Hunt	33



Township of Lower Makefield

RECREATIONAL FACILITIES

COMMUNITY PARK

32.7 Acres

1050 Edgewood Rd

This park is north and south of the 1100 Edgewood Road near the Lower Makefield Township Building.

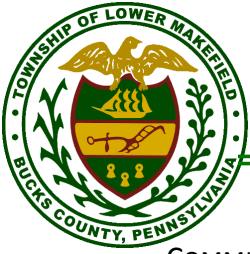
- Pool Complex w/parking
 - 1050 Edgewood Rd, dedicated 1981
 - Paved Parking, 2 lots with 130 spots each, gravel parking is also available.
 - Olympic Sized Community Pool (lighted), diving area, intermediate and tot sized pools, snack bar, dual slides, diving boards, all pools are heated.
- Kids Kingdom Playground
 - Dedicated in 1992
- Tennis Courts & Basketball Complex
 - 4 lighted community tennis courts
 - 1 lighted basketball court
- Community Softball Field (lighted)
- Nature Trail
- Sand Volley Ball: Greg Caiola Complex:2, one 90' and one 70' fields
- Stoddard Field: 3, 60' with concession stand
- Picnic area with restroom facility and pavilion

2017 Improvements

- New heater was installed in lap pool, chlorinator was repaired.
- All four pools painted, caulked, and leaks addressed.
- All slide finished
- New lounge chair
- 8 new computers at the pool
- Concession stand \, new floors ceiling and renovations.
- Stoddard Field new drainage, improvements to field three
- Infield mix added to all complexes, new bases and mound work.
- Continued the trex overlay, installed a new bench
- Sustain the playground facility and pavilions

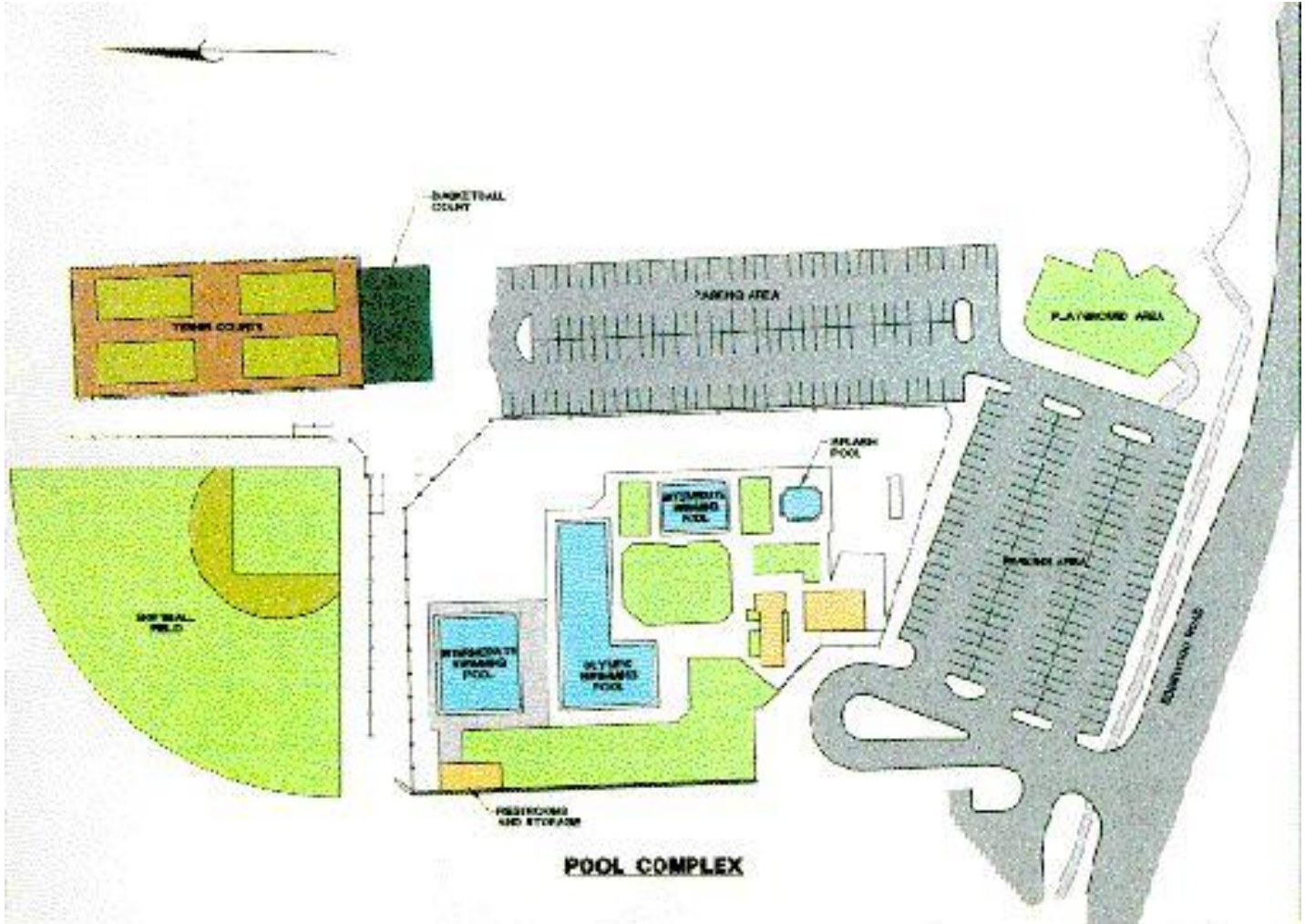
Planned improvements

- Implement planned pool renovations identified in feasibility study and member surveys; tot pool renovations with splash pads and water play features, zero depth entry ramp, intermediate pool expansion with built in seating and shade.
- Kids Kingdom restroom improvements
- Pave gravel parking lot
- Continue landscape/tree additions to Caiola, Pool and Kids Kingdom.



Township of Lower Makefield

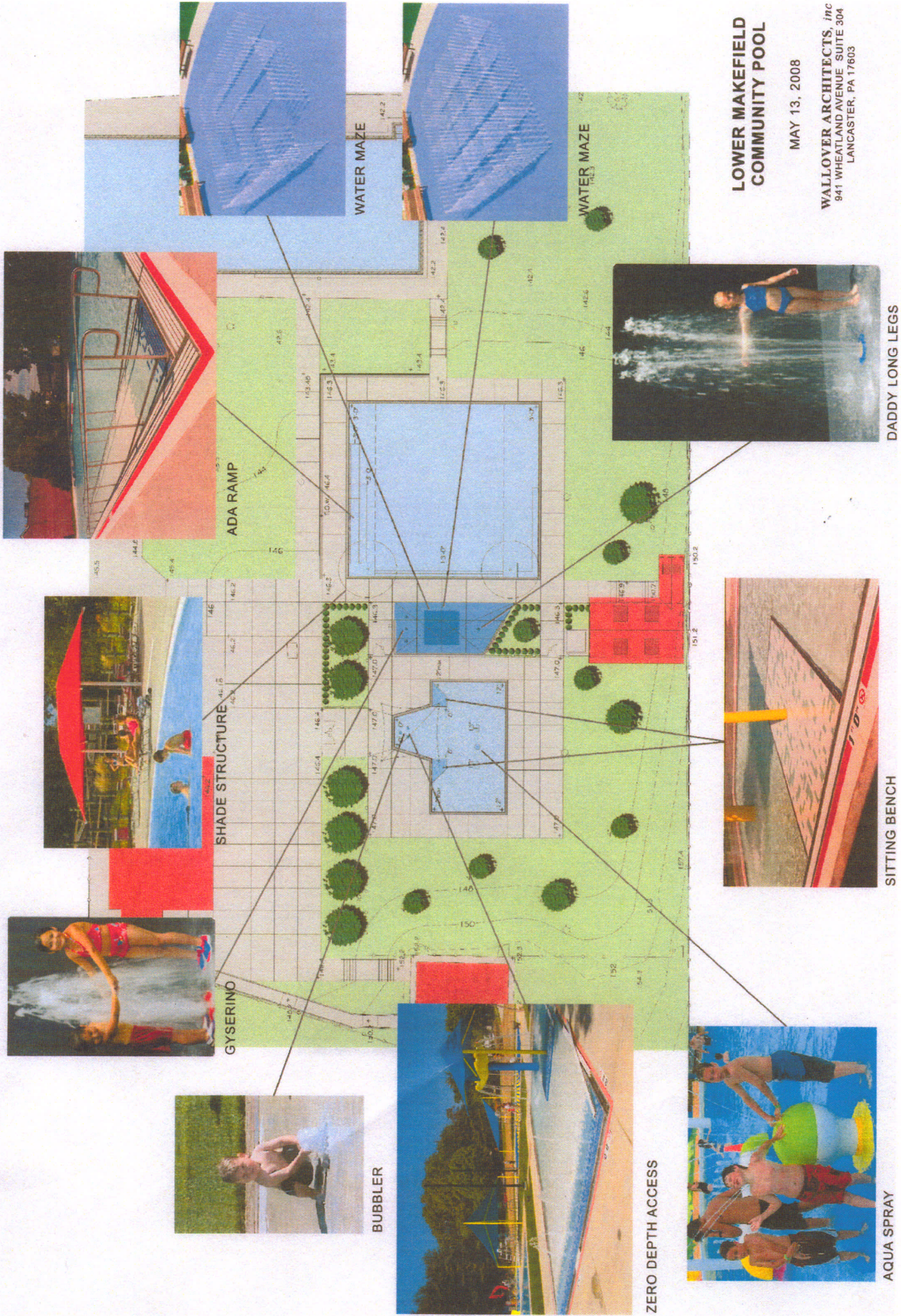
COMMUNITY PARK MAP



Notes:



COMMUNITY POOL COMPLEX



**LOWER MAKEFIELD
COMMUNITY POOL**

MAY 13, 2008

WALLOVER ARCHITECTS, Inc
941 WHEATLAND AVENUE SUITE 304
LANCASTER, PA 17603



1277010
 PROJECT NO.
 DATE: 05/01/13
 DRAWN BY: J. L. HARRIS
 CHECKED BY: J. L. HARRIS
 APPROVED BY: J. L. HARRIS
 PREPARED BY: J. L. HARRIS

PAUL J. HARRIS & ASSOCIATES, P.A.
 CONSULTING ENGINEERS & ARCHITECTS
 1100 EISENHORN ROAD
 YANDELY, PA 18097

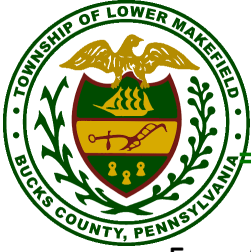
STANFORD TRACT BALLFIELDS
 LOWER MERSENER TOWNSHIP
 BUCKS COUNTY, PENNSYLVANIA
 LOWER MERSENER TOWNSHIP
 1100 EISENHORN ROAD
 YANDELY, PA 18097

SHEET
 1 OF 1
 MAY 7, 2013

ILLUSTRATIVE SITE PLAN

TOWNSHIP PARK LANDS LOCATED NEAR MUNICIPAL COMPLEX
Lower Makefield Township





Township of Lower Makefield

FRED ALLAN SOFTBALL COMPLEX

23 Acres

1500 Oxford Valley Rd

- Dedicated in 1999
- 3 Soft Ball Fields, dugouts, water on 3 fields, electric on 2 fields
- Batting Cage
- 2 All-weather Bocce Courts; tot pieces
- Picnic area with concession stand
- Restroom Facility and covered pavilion with a floor
- Walking trail/ bike path
- Approximately 120 paved parking spots
- Underdrains installed on all three fields in 2014

2017 Improvements to date

- Infield mix applied to fields
- Plumbing repairs to restrooms and concessions

Planned improvements and considerations

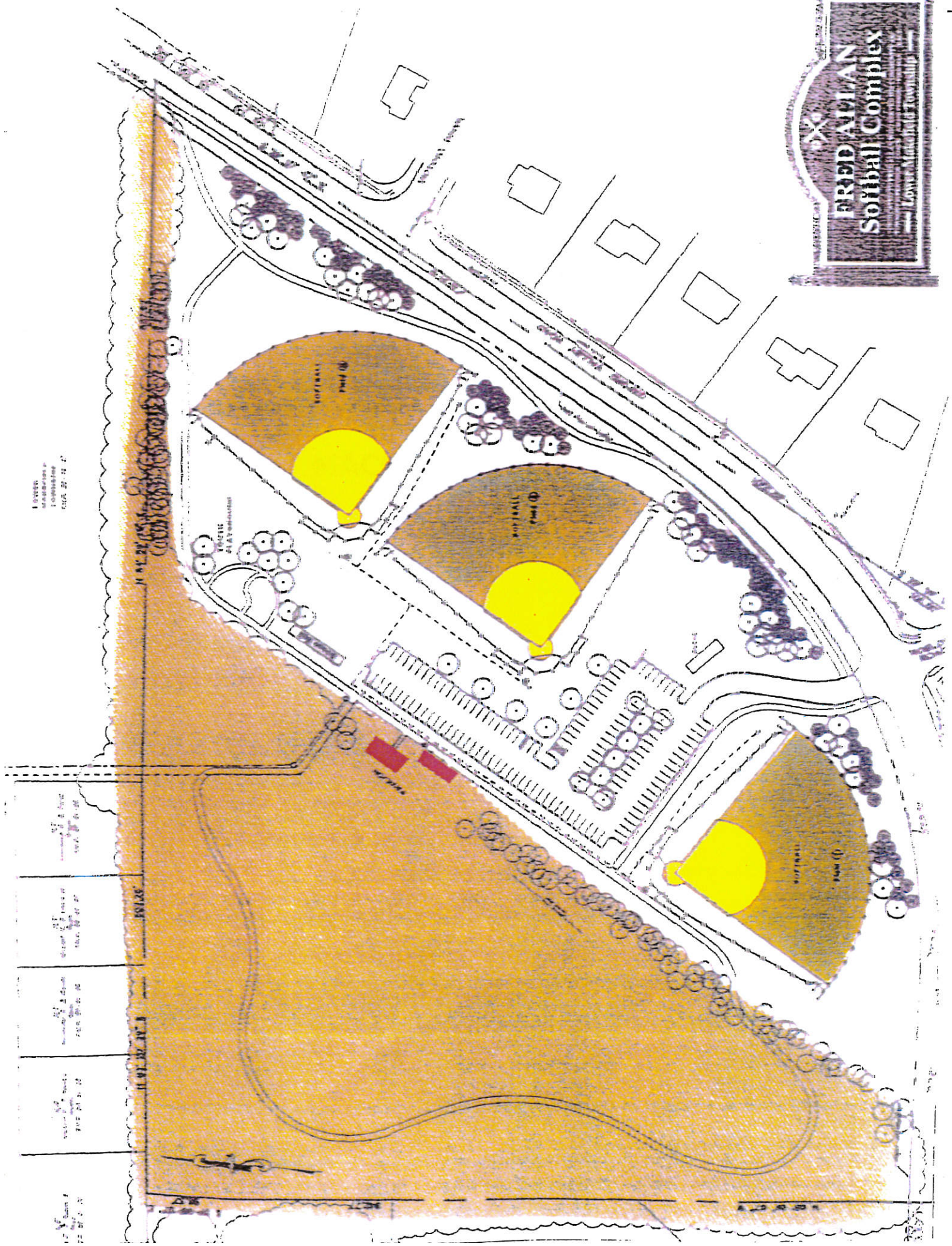
- Completion of trail system
- Complete top coat and stripe parking lot
- Installation of "turn-around" at end of parking lot or installation of connector road

Continuation of Greenway

- Consideration of land tie in to Community Park at Caiola complex and Stoddard baseball fields.

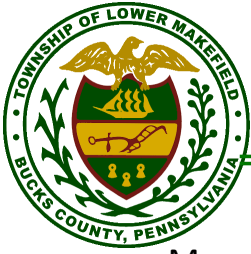
Notes:

FRIDAY ATIAN
Soccer Complex
 Lower Merion Township



1. SHEET
 2. DATE
 3. DRAWN BY
 4. CHECKED BY

1. SHEET	2. DATE	3. DRAWN BY	4. CHECKED BY



Township of Lower Makefield

MACCLESFIELD PARK

91.9 Acres

1000 River Rd

- Front 60 acres dedicated 1989, rear 30 acres dedicated in 1997
- 8 full size multi-purpose fields (6 lighted) for use as regulation soccer football and baseball fields. Including one all-weather turf field installed by YMS.
- 2, 90' lighted baseball fields
- 1, 75' lighted baseball field
- 4 sand volleyball courts
- 2 mid-sized soccer fields
- 5 mini soccer fields
- Tot lot play area
- Bike path and exercise stations
- Picnic areas and restrooms (3 stall women, 2 men)
- 2 pavilions, a concession stand, maintenance garage
- Access to the canal towpath
- Approximately 600 parking spaces, paved
 - 400 front lot
 - 200 rear lot

2017 improvements to date

- Ongoing turf restoration and over seeding
- Stadium lights
- Wood carpet in playground
- Stadium lights ballast repairs light switch repairs
- Eagle Scout project installed Macclesfield Park sign
- Security cameras updated

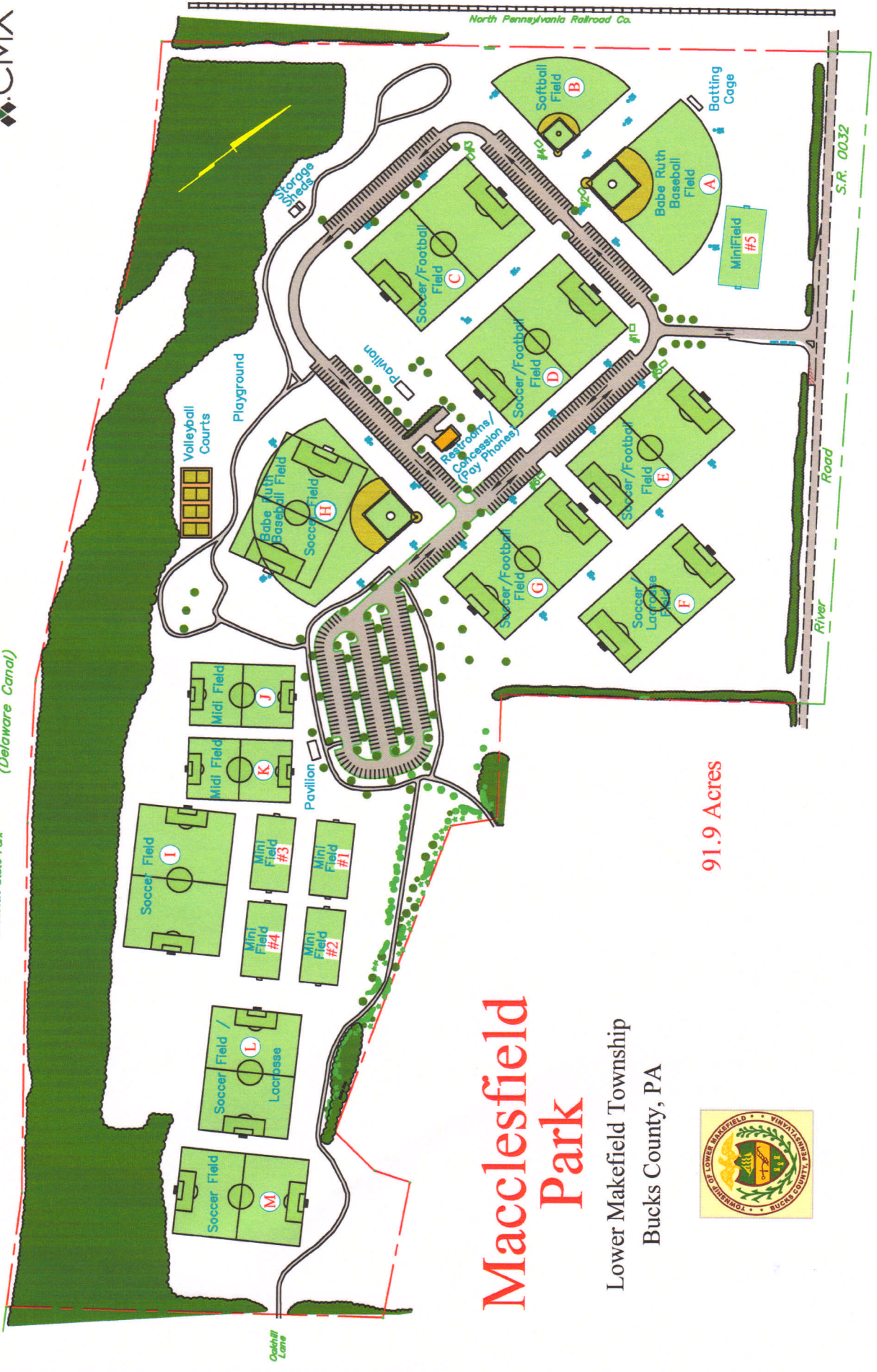
Planned improvements and considerations

- Upgrade stadium lighting circuitry on original fields A,C,D including replacing with LED lights
- 3 acres of fenced area and clean up and reclaim
- Fill parking lot cracks and resurface parking lots
- Additional restroom capacity, clubhouse consideration.

Notes:



Roosevelt State Park
(Delaware Canal)



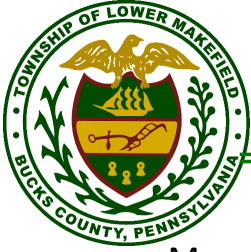
Macclesfield Park

Lower Makefield Township
Bucks County, PA



91.9 Acres

S.R. 0032



Township of Lower Makefield

MEMORIAL PARK

63.5 Acres

1950 Woodside Rd

Purchased 1996, \$1.5 million

- Phase I Completed 2006
 - Utilities to site, initial seeding with grading
 - Wearing course only main entry rd and loop rd
 - Wearing course only Phase I parking area
 - 2 basketball courts; 2 sand volley ball courts
 - Community garden plots with water parking
 - Unisex restroom with covered patio
 - 1 skinned softball field; backstop installed 2009
- Phase II completed 2014
 - Secret Garden themed playground; inclusive fencing, ADA parking lots, landscaping, signage
 - Installed multipurpose field with goals, benches
- Completed in 2016
 - Phase I arboretum 25 plantings in chimney area, includes specimen planting at high point in township
 - Pave entry road, loop road and parking lot
 - Install surveillance cameras
 - Cracks repaired in parking lots
 - Install gaga court by girl scouts
 - New picnic tables and grill at the new pavilion
 - Continual repairs to lights in Garden of Reflection
 - Dailey maintenance required at fountain filter
 - Daily check and surface cleaning of playground
- Completed in 2017
 - Continue arboretum plantings in chimney area
 - Installed paved 1k loop for walking
 - Paving the parking lot
 - Continuing development and expansion into the undeveloped side of the park.
 - Continual maintenance of lights
 - Dailey maintenance required at fountain filter
 - Daily check and surface cleaning of playground
 - Installed small garage for park mower.
- In progress
 - Additional parking bay
 - Picnic pavilions
 - Playground

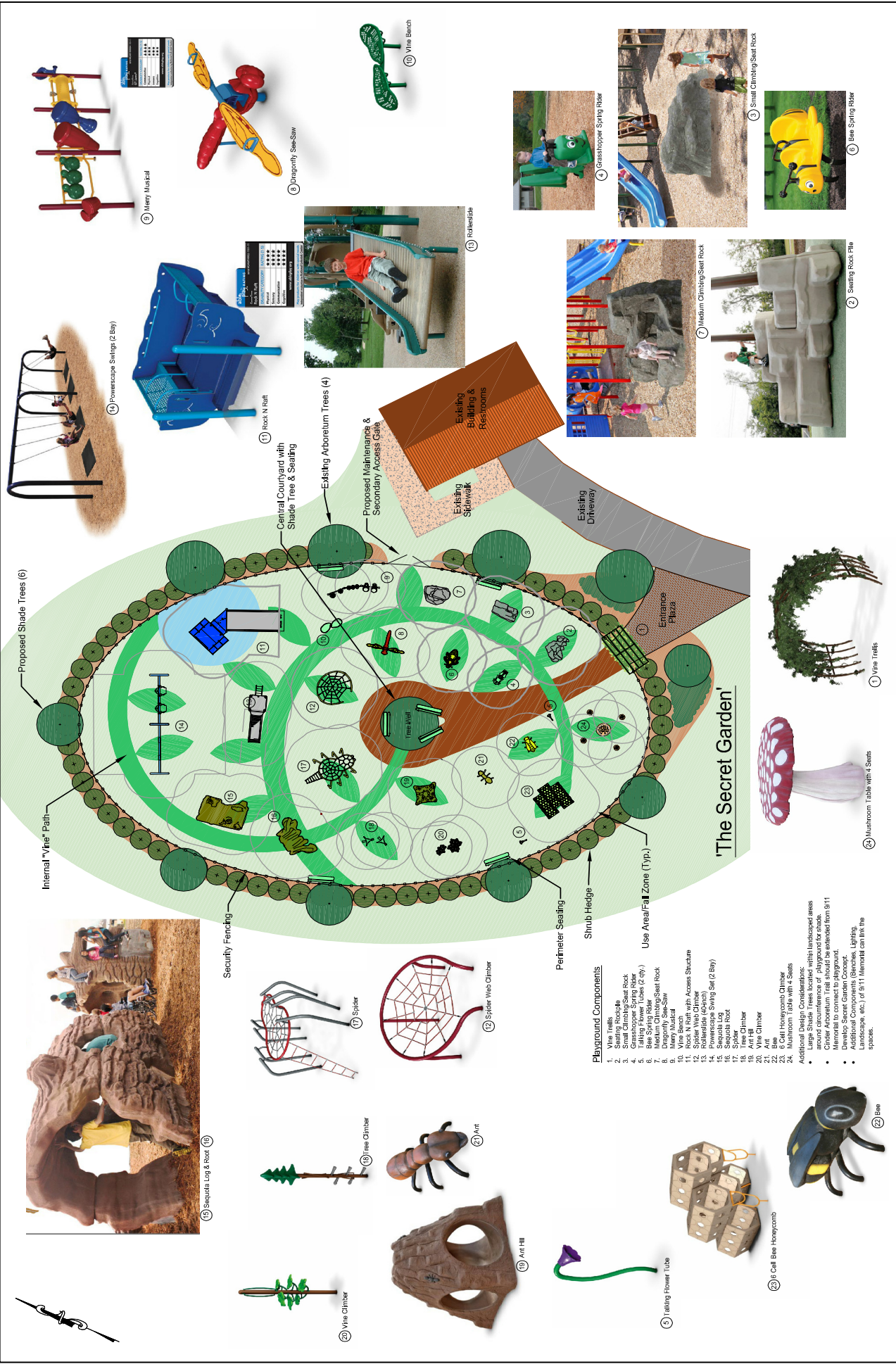
Notes:

MEMORIAL PARK PHASE 2



NO.	REVISION	DATE	BY	CHK. BY
SITE				
MEMORIAL PARK LOWER MAKEFIELD TOWNSHIP BUCKS COUNTY, PENNSYLVANIA				
DATE:				
THOMAS F. BEACH PROFESSIONAL ENGINEER LIC. NO. PE-060848-E				
R v REMINGTON, VERNICK & BEACH ENGINEERS				
922 FAYETTE STREET, CONSHOHOCKEN, PA. 19428				
(610) 940-1050, FAX: (610) 940-1161, WEB SITE ADDRESS: WWW.RVE.COM				
SCALE	DATE	DRAWN BY	DSGN. BY	CHK'D. BY
1" = 200'	4/09	JMB	JRM	
DWG. NO.		SHEET NO.		
PBLMT005		1 OF 1		
DWG FILE PATH/NAME				

G:\Drafting\Drafting\PA\Lower Makefield Township\PBLMT005 - MEMORIAL PARK\Garden-4-16-09.dwg, 4/20/2009 2:18:26 PM



CONCEPTUAL MASTER PLAN - OPTION B

Boucher & James, Inc.
 1000 STRAUSSBURG ROAD, SUITE 200
 DOYLESTOWN, PA 19340
 CONTACT INFORMATION: (610) 326-2200 FAX: (610) 326-2201
 WWW.BOUCHERANDJAMES.COM

MEMORIAL PARK PLAYGROUND

LOWER MAKEFIELD TOWNSHIP
 PENNSYLVANIA
LOWER MAKEFIELD TOWNSHIP
 1100 EDGEWOOD ROAD
 TADOLET, PA 19067

PROJECT NO: 12-77-011
 DATE: 08/20/12
 SHEET: 1 OF 1
 PRELIMINARY

SCALE: 1" = 10'

DATE: 08/20/12

NO.	DESCRIPTION	DATE	BY	CHKD.
1	CONCEPTUAL MASTER PLAN - OPTION B	08/20/12	JAMES BOUCHER	DAVID JAMES

MEMORIAL PARK PLAYGROUND
 LOWER MAKEFIELD TOWNSHIP
 PENNSYLVANIA
LOWER MAKEFIELD TOWNSHIP
 1100 EDGEWOOD ROAD
 TADOLET, PA 19067

Additional Design Considerations:

- Large Shade Trees located within landscaped areas around circumference of playground for shade.
- Openings in fence identified from 9/11 Memorial to connect to playground.
- Develop Secret Garden Concept.
- Additional Components (Benches, Lighting, Landscape, etc.) of 9/11 Memorial can link the spaces.

Playground Components

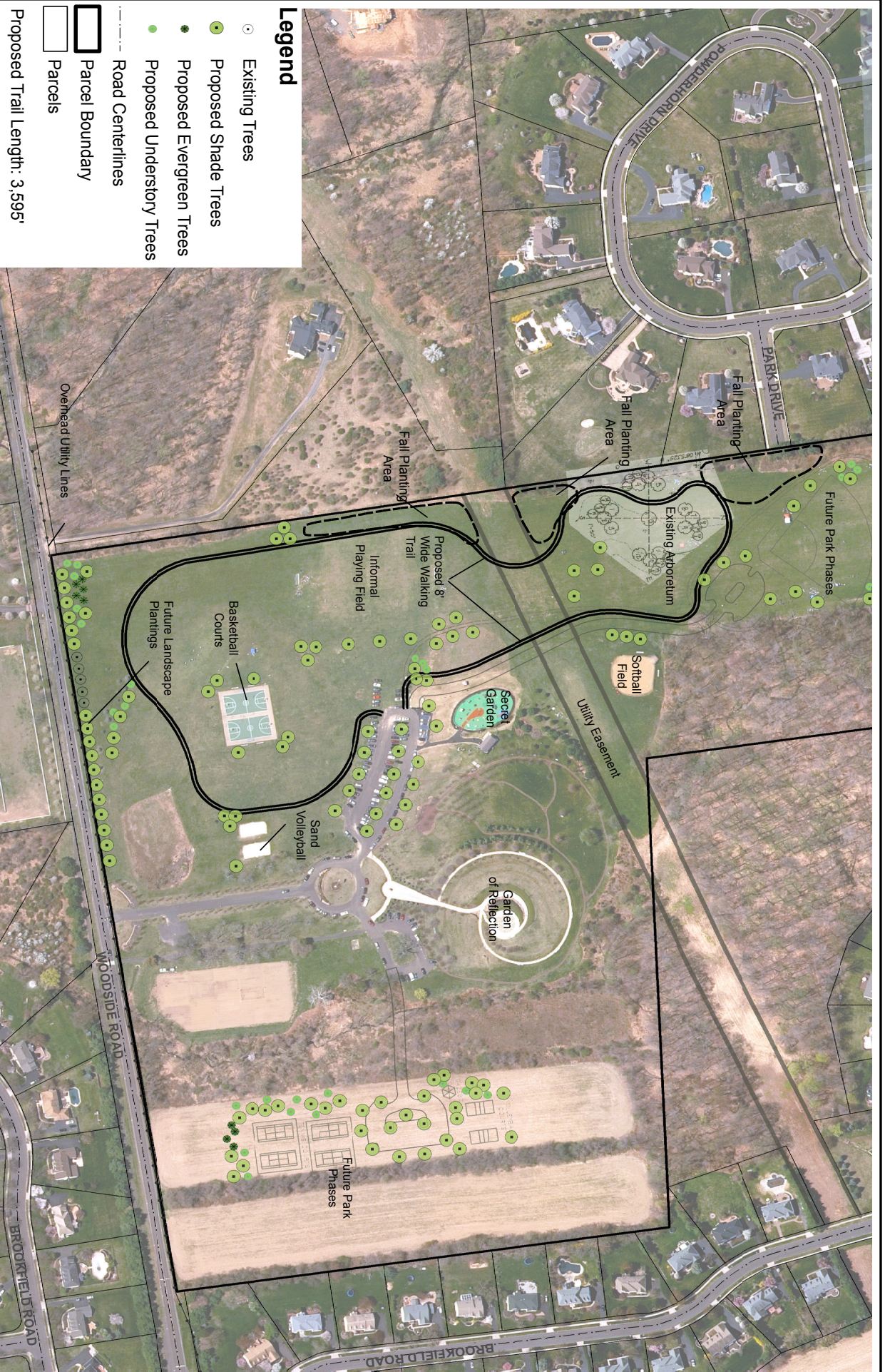
- Vine Trellis
- Seating Rockpile
- Grasshopper Spring Rider
- Talking Flower Tubes (2 City)
- Bee Spring Rider, Seat Rock
- Dragonfly See-Saw
- Merry Musical
- Rock N Raft with Access Structure
- Spider Web Climber
- Powerscape Swing Set (2 Bay)
- Snake Log
- Shuttle Log
- Tree Climber
- Art Hill
- Art Hill
- Art Hill
- Bee Honeycomb Climber
- Mushroom Table with 4 Seats
- Mushroom Table with 4 Seats

Additional Design Considerations:

- Large Shade Trees located within landscaped areas around circumference of playground for shade.
- Openings in fence identified from 9/11 Memorial to connect to playground.
- Develop Secret Garden Concept.
- Additional Components (Benches, Lighting, Landscape, etc.) of 9/11 Memorial can link the spaces.

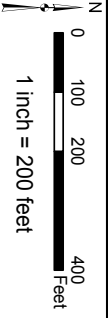
Playground Components

- Vine Trellis
- Seating Rockpile
- Grasshopper Spring Rider
- Talking Flower Tubes (2 City)
- Bee Spring Rider, Seat Rock
- Dragonfly See-Saw
- Merry Musical
- Rock N Raft with Access Structure
- Spider Web Climber
- Powerscape Swing Set (2 Bay)
- Snake Log
- Shuttle Log
- Tree Climber
- Art Hill
- Art Hill
- Art Hill
- Bee Honeycomb Climber
- Mushroom Table with 4 Seats
- Mushroom Table with 4 Seats



- Legend**
- Existing Trees
 - Proposed Shade Trees
 - Proposed Evergreen Trees
 - Proposed Understory Trees
 - Road Centerlines
 - ▭ Parcel Boundary
 - ▭ Parcels
- Proposed Trail Length: 3,595'

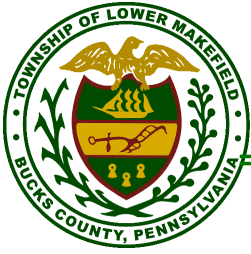
B Boucher & James, Inc.
 CONSULTING ENGINEERS
 www.bjengr.com
 Date June 20, 2016
 1677055



Information Sources:
 Aerial Images: DVMPC Aerial Photography 2015, Southeast PA
 Parcel and Boundary Data: Bucks County Planning Commission, 2016

**Proposed Arboretum Walking Trail at
 Memorial Park - Option 2**

NOTES:



Township of Lower Makefield

FIVE MILE WOODS

298 Acres

1305 Big Oak Rd

- 285 acres of open space preserve purchased in 1979
- 13 acres of open space added
- Nature center
- Ranger office
- Manor house\5 miles of nature trails/ handicap accessible
- Gravel parking for 50 vehicles

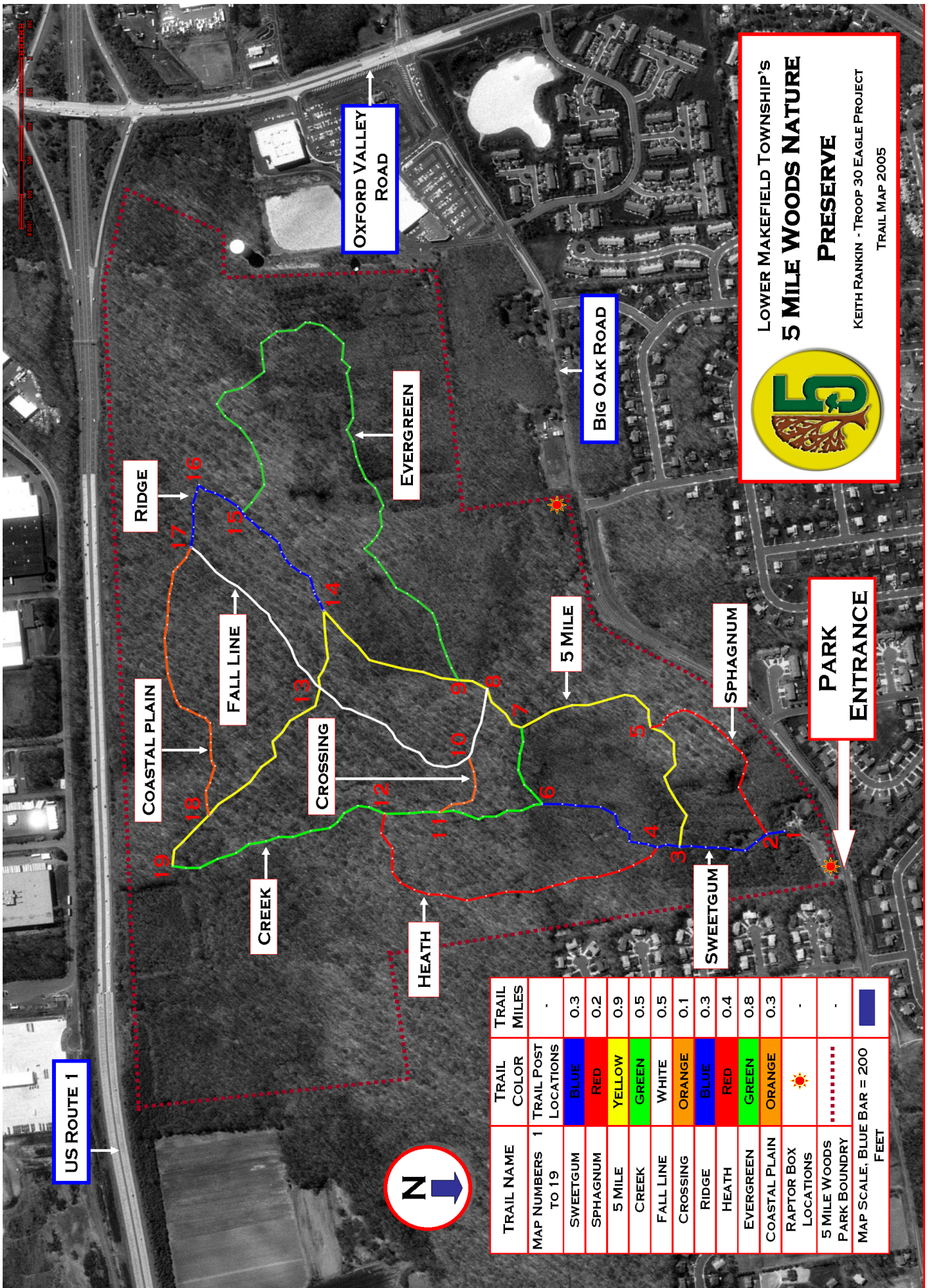
2017 improvements to date

- Millings added and raked in parking lot
- Repaired roof
- Overgrown brush cleared
- Boardwalks installed on trail system

Planned Improvements and considerations

- Install new roof requested by Friends of Five Mile Woods

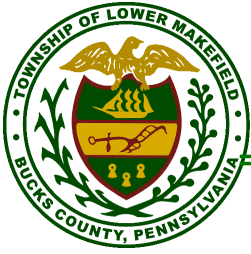
Notes:



LOWER MAKEFIELD TOWNSHIP'S
5 MILE WOODS NATURE
PRESERVE
 KEITH RANKIN - TROOP 30 EAGLE PROJECT
 TRAIL MAP 2005



TRAIL NAME	TRAIL COLOR	TRAIL MILES
MAP NUMBERS 1 TO 19	TRAIL POST LOCATIONS	-
SWEETGUM	BLUE	0.3
SPHAGNUM	RED	0.2
5 MILE	YELLOW	0.9
CREEK	GREEN	0.5
FALL LINE	WHITE	0.5
CROSSING	ORANGE	0.1
RIDGE	BLUE	0.3
HEATH	RED	0.4
EVERGREEN	GREEN	0.8
COASTAL PLAIN	ORANGE	0.3
RAPTOR BOX LOCATIONS	☀	-
5 MILE WOODS PARK BOUNDARY	-
MAP SCALE: BLUE BAR = 200 FEET	▬	-



Township of Lower Makefield

LMT BIKE PATHS

25 Miles

Connected

- Continue snow removal
- Resurface Mill Rd. bike path and install new connection from Yardley Hunt to veterans Square.
- Snow removal

Planned Improvements

- Complete link on Woodside Road; Upper Hilltop to Merrick Road, possibly done in conjunction with scudders falls bridge restoration work a and path extended down Woodside to Taylorsville Road.
- Complete new bike path along perimeter of Snipes tract, Quarry Road to Dolington Road.
- Greg Caiola Complex; Oxford Valley Road between Edgewood and Roelofs Road; Greenway tie-in.
- Creamery Road link connecting existing path to Yardley Newtown Road; approximately 1500 ft.
- Resident request extension Dolington Meeting house to Farm View.
- Request from resident to consider completing link on Lindenhurst to Woodside
- Continue resurfacing program as identified by Township engineer and Park and Recreation.

Notes:

LOWER MAKEFIELD TWP.

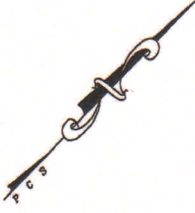
LEGEND

WALKWAY & BICYCLE PATH
WALKWAY & BICYCLE LANE

EXISTING PROPOSED

— (orange) — (dotted orange)
— (blue) — (dotted blue)

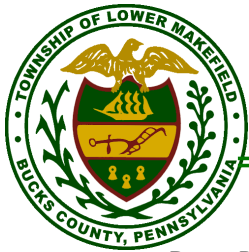
PUBLIC SERVICES / RECREATION FACILITIES (X)
SCHOOLS (●)



OFFICIAL MAP
TOWNSHIP OF LOWER MAKEFIELD
Bucks County, Pennsylvania
ADOPTED APRIL 7, 1997
Revised November 9, 1998

THIS MAP SUPERSEDES AND REPLACES SHEET 2 OF THE OFFICIAL MAP OF LOWER MAKEFIELD TOWNSHIP TITLED "WALKWAY MAP" DATED FEB 2, 1990 LAST REVISED SEPT 1992

PICKERING, CORTS & SUMMERSON, INC. Prepared By: Pickering, Cortis and Summerison



Township of Lower Makefield

DOG PARK (IN PROGRESS)

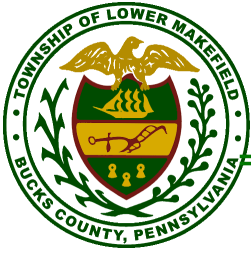
3.5 Acres

1950 Covington Rd

- The dog park will be located in Lower Makefield Township off Heacock Road, bordered by Covington Road and the railroad tracks at 1950 Covington Road.
- The dog park will cover approximately 3.5 acres and will have separate sections for small and large dogs, as well as a transitional area. A preliminary design is shown below.
- Anticipated project completion November 15, 2017.



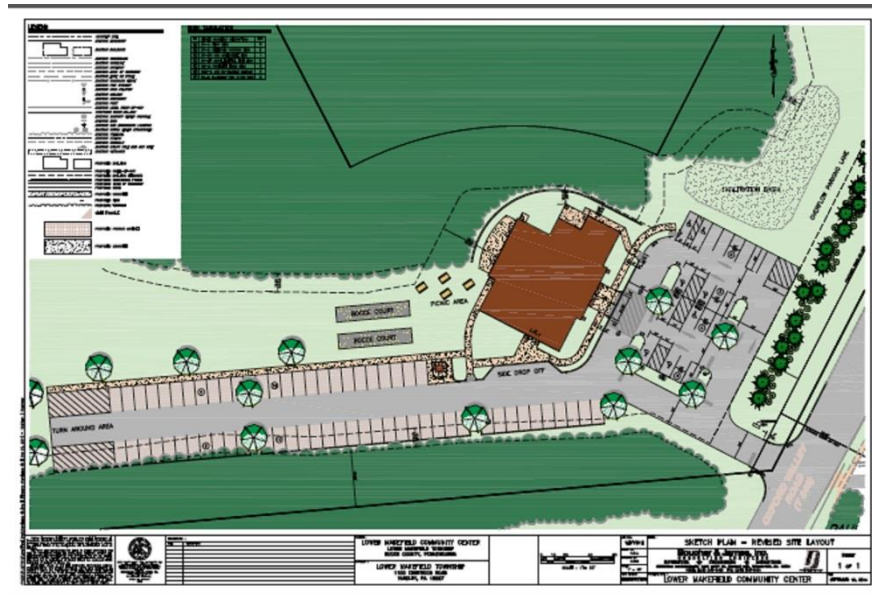
Notes:



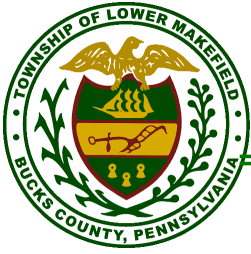
Township of Lower Makefield

COMMUNITY CENTER (IN PROGRESS)

- This project consists of the construction of a new one story community center and associated site work. The community center will house a large multi-purpose room, classrooms, offices, and a small warming kitchen.
- Board approved 5,235 square-foot space, anticipated cost a little more than \$2 million.



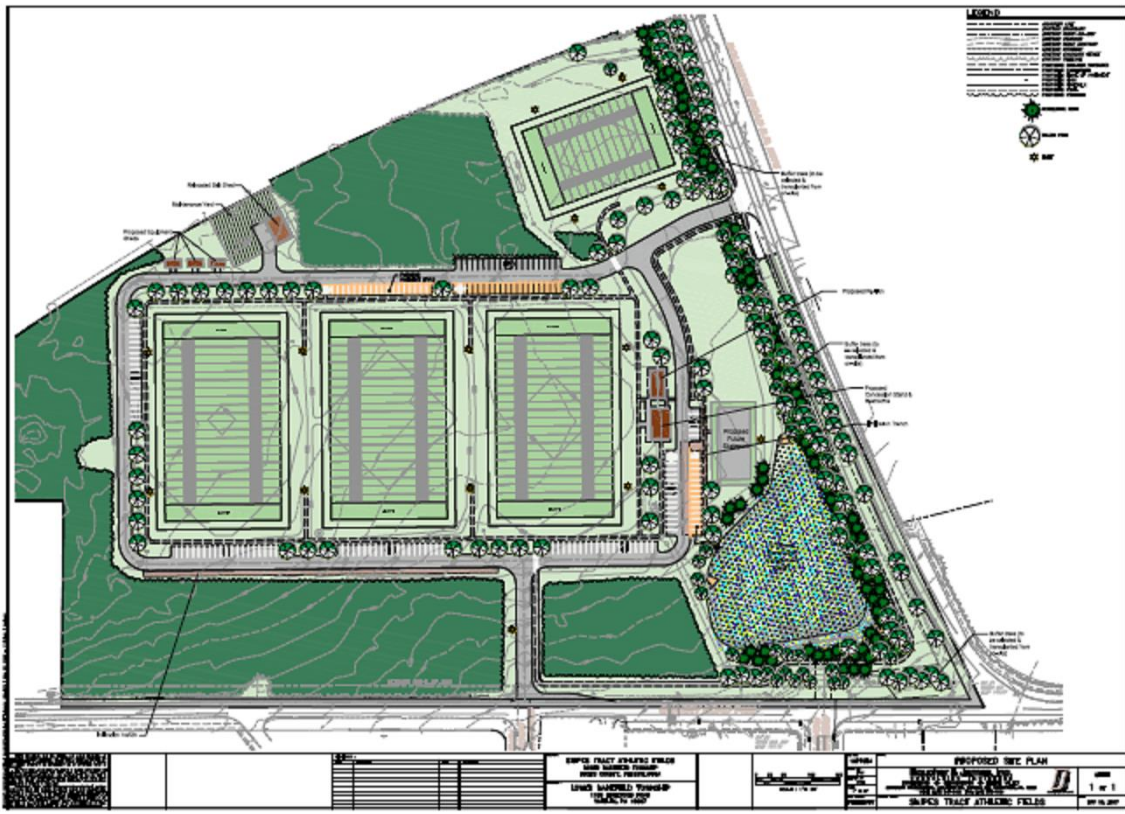
Notes:



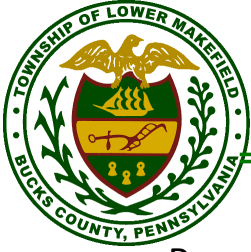
Township of Lower Makefield

SNIPES FARM (IN PROGRESS)

- Located on the corner of Dolington and Quarry Hill Roads.
- Phase one Bid and Awarded
- Includes three athletic fields with associated parking areas and access roads, storm water management, and utility connections.



Notes:



Township of Lower Makefield

POCKET PARKS

VETERANS SQUARE

2.8 Acres

1660 Edgewood Rd

- Veterans Square Monument
- Weekly Farmers Market
- Tot lot play area
- Picnic area with benches
- Gravel Parking area for 50 cars
- Water fountain

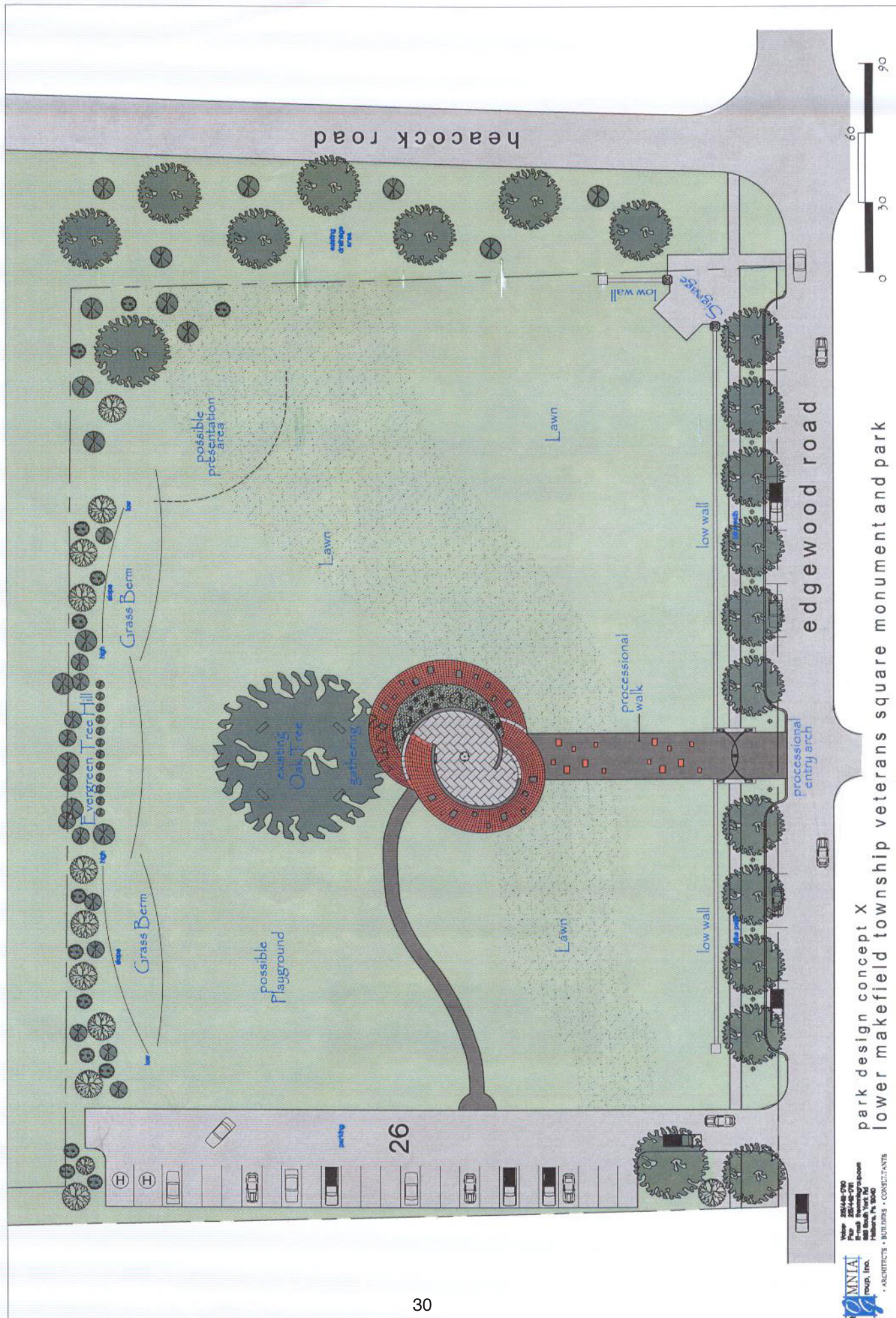
2017 improvements

- Installed electric from the junction box to the corner, in preparation for lighting a future sign.
- Manufacturer replaced a recalled slide
- Wood fiber playground surface
- Parking spaces marked weekly for Farmers Market

Future Improvements/Considerations

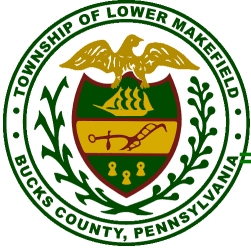
- Complete landscaping, walkways and paths as shown on concept plan.

Notes:



park design concept X
 lower makefield township veterans square monument and park

Volume 201/448-070
 Plan 201/448-070
 Evergreen Tree Hill
 Lower Makefield Township
 Harrisburg, PA 17000
 MNIA Group, Inc.
 ARCHITECTS • BUILDERS • CONSULTANTS



Township of Lower Makefield

HEACOCK MEADOWS

8.2 Acres

Heacock/Bluebird/Covington

- 4.5 Acres of Heacock Meadows Pocket Parks.
 - #1, #2, #3 and #4 off Cardinal Drive and off Bluebird Drive in Heacock Meadows Development.
 - Dedicated 1979
 - 1 Tot lot
 - Tennis court
 - 2 Pickleball courts
 - Basketball court
- 3.7 Acres Heacock Meadows Field off Covington Rd.
 - Developed as dog park (see dog park plan for details)

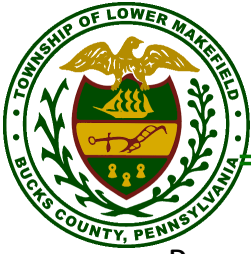
2017 Improvements to date:

- Renovating two tennis courts/pickle ball courts.
- Re-mulch tot-lot

Planned Improvements and considerations:

- Replace tennis court fence

Notes:



Township of Lower Makefield

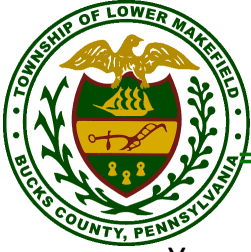
PEAKE FARM

1.69 Acres

Twig Lane

- Tot lot playground

Notes:



Township of Lower Makefield

YARDLEY HUNT

3.1 Acres

Revere/Schulyer

- Schulyer Drive: 4 dedicated tennis
- Revere: 3 tennis/ pickle ball
- Paved parking areas approximately 12 vehicles at each location

Planned Improvements and considerations:

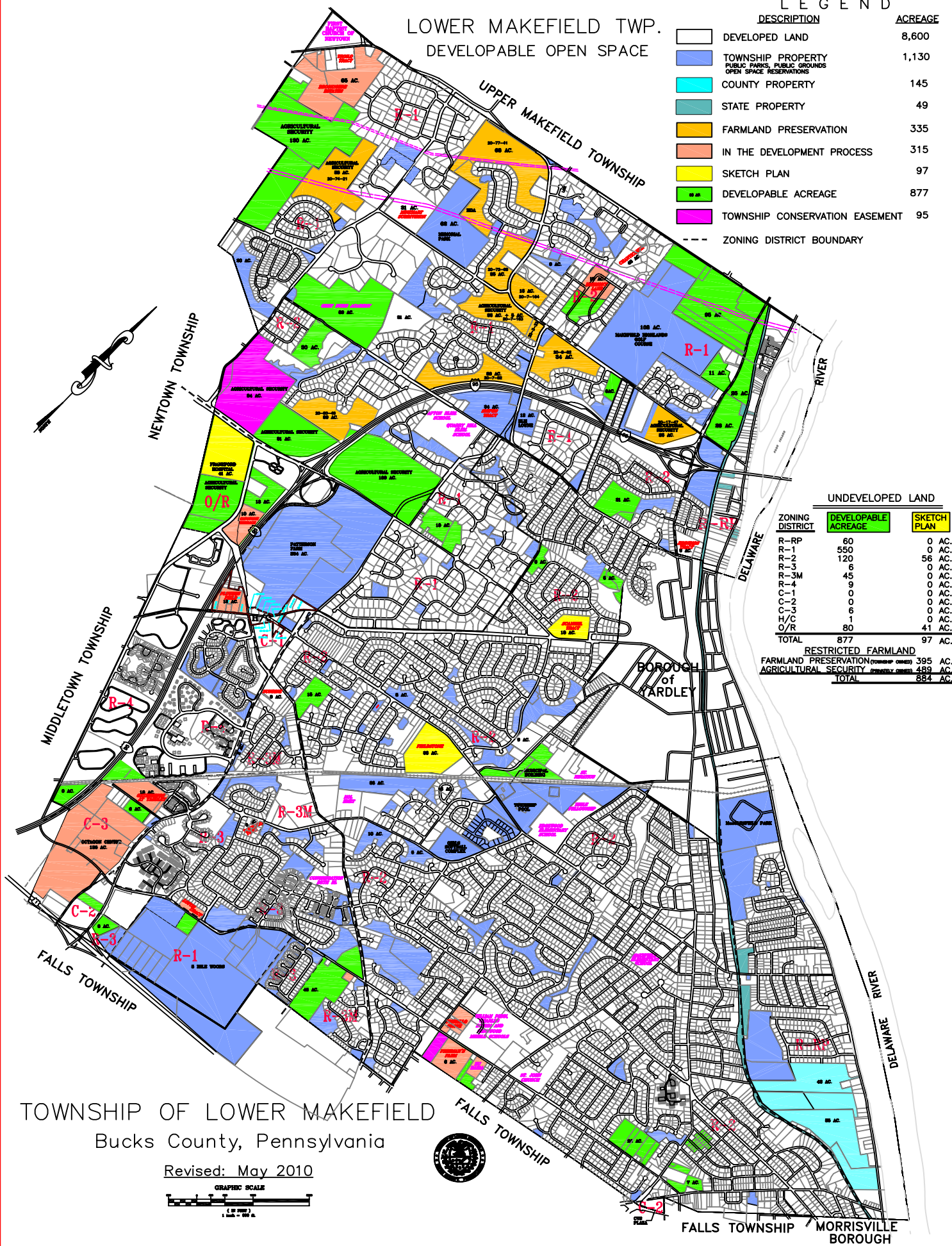
- Crackfill and paint Schulyer 4 tennis courts.
- Replace all fencing; install bottom rails
- Overseed Revere area that was returned to Natural State.

Notes:

LOWER MAKEFIELD TWP.
DEVELOPABLE OPEN SPACE

LEGEND

DESCRIPTION	ACREAGE
DEVELOPED LAND	8,600
TOWNSHIP PROPERTY PUBLIC PARKS, PUBLIC GROUNDS OPEN SPACE RESERVATIONS	1,130
COUNTY PROPERTY	145
STATE PROPERTY	49
FARMLAND PRESERVATION	335
IN THE DEVELOPMENT PROCESS	315
SKETCH PLAN	97
DEVELOPABLE ACREAGE	877
TOWNSHIP CONSERVATION EASEMENT	95
--- ZONING DISTRICT BOUNDARY	



UNDEVELOPED LAND		
ZONING DISTRICT	DEVELOPABLE ACREAGE	SKETCH PLAN
R-RP	60	0 AC.
R-1	550	0 AC.
R-2	120	56 AC.
R-3	6	0 AC.
R-3M	45	0 AC.
R-4	9	0 AC.
C-1	0	0 AC.
C-2	0	0 AC.
C-3	6	0 AC.
H/C	1	0 AC.
O/R	80	41 AC.
TOTAL	877	97 AC.
RESTRICTED FARMLAND		
FARMLAND PRESERVATION (OWNER OWNED)	395 AC.	
AGRICULTURAL SECURITY (TOWNSHIP OWNED)	489 AC.	
TOTAL	884 AC.	

TOWNSHIP OF LOWER MAKEFIELD
Bucks County, Pennsylvania

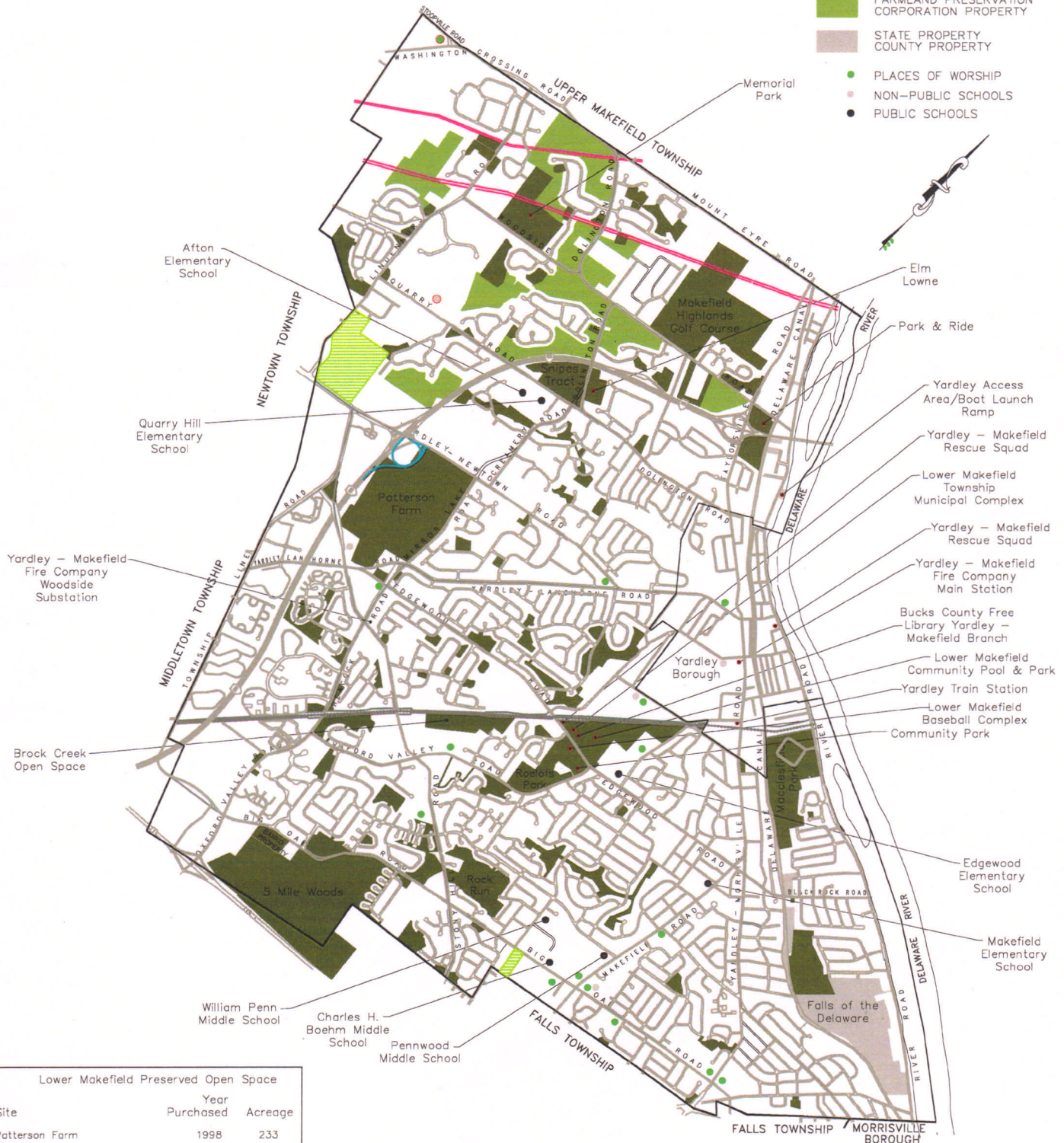
Revised: May 2010





LOWER MAKEFIELD TOWNSHIP PUBLIC FACILITIES, RECREATION AND OPEN SPACE

- TOWNSHIP EASEMENTS
- TOWNSHIP PROPERTY
PUBLIC PARKS, PUBLIC GROUNDS,
OPEN SPACE
- FARMLAND PRESERVATION
CORPORATION PROPERTY
- STATE PROPERTY
COUNTY PROPERTY
- PLACES OF WORSHIP
- NON-PUBLIC SCHOOLS
- PUBLIC SCHOOLS



Lower Makefield Preserved Open Space		
Site	Year Purchased	Acreage
Patterson Farm	1998	233
Snipes Tree Farm	1998	42.5
Brock Creek Open Space (Faytal)	1998	33.5
Elm Lowne	1999	12
Community Park (Samost)	2000	25.7
Milner Property	2001	1.25
Wright Farm Easement	2004	84
Gates Easement	2004	6
Banko Property	2003	12.89

