

PLAN PREPARATION

DESIGNER TRAFFIC PLANNING & DESIGN, INC.

DISTRICT	COUNTY	TOWNSHIP	BOROUGH	ROUTE	SECTION	TOTAL SHEETS
6-0	BUCKS	LOWER MAKEFIELD		0000	LMT	23

ECMS NO. 111468

LOWER MAKEFIELD TOWNSHIP

DRAWINGS FOR CONSTRUCTION OF OXFORD VALLEY ROAD SHARED USE PATH ON TOWNSHIP ROUTE T-344

ALSO INCLUDED:

TRAFFIC CONTROL PLAN	1	SHEET
TRAFFIC SIGNAL PLAN	5	SHEETS
EROSION AND SEDIMENT POLLUTION CONTROL PLAN	15	SHEETS
POST CONSTRUCTION STORMWATER MANAGEMENT PLAN	12	SHEETS

IN BUCKS COUNTY

FROM STA. 52+50.00 TO STA. 80+37.87 LENGTH 2737.87 FT. 0.519 MI.

AND

TOWNSHIP ROUTE T-767

IN BUCKS COUNTY

FROM STA. 23+50.00 TO STA. 37+00.00 LENGTH 1250.00 FT. 0.237 MI.

TOTAL LENGTH 3987.87 FT. 0.756 MI.

SCALE

HORIZONTAL 

VERTICAL 

DESIGN DESIGNATION

T-344

TRAFFIC DATA

HIGHWAY CLASSIFICATION — URBAN COLLECTOR
 DESIGN SPEED — 35 MPH
 PAVEMENT WIDTH — 24'
 SHOULDER WIDTH — VARIES 4' TO 8'
 MEDIAN WIDTH — N/A

CURRENT ADT — 3,330 VPD (2020)
 DESIGN YEAR ADT — 3,753 VPD (2040)
 DHV — 413 VPH
 D — 50%
 T — 6%

T-767

TRAFFIC DATA

HIGHWAY CLASSIFICATION — URBAN COLLECTOR
 DESIGN SPEED — 25 MPH
 PAVEMENT WIDTH — 22'
 SHOULDER WIDTH — VARIES 8' TO 10'
 MEDIAN WIDTH — N/A

CURRENT ADT — 6,361 VPD (2020)
 DESIGN YEAR ADT — 7,169 VPD (2040)
 DHV — 645 VPH
 D — 56%
 T — 3%

PREPARED BY:



TRAFFIC PLANNING
AND DESIGN, INC.
2500 E. HIGH STREET
SUITE 650
POTTSTOWN, PA 19464

RECOMMENDED DATE: _____

REG. PROF. ENGINEER

DISTRICT EXECUTIVE

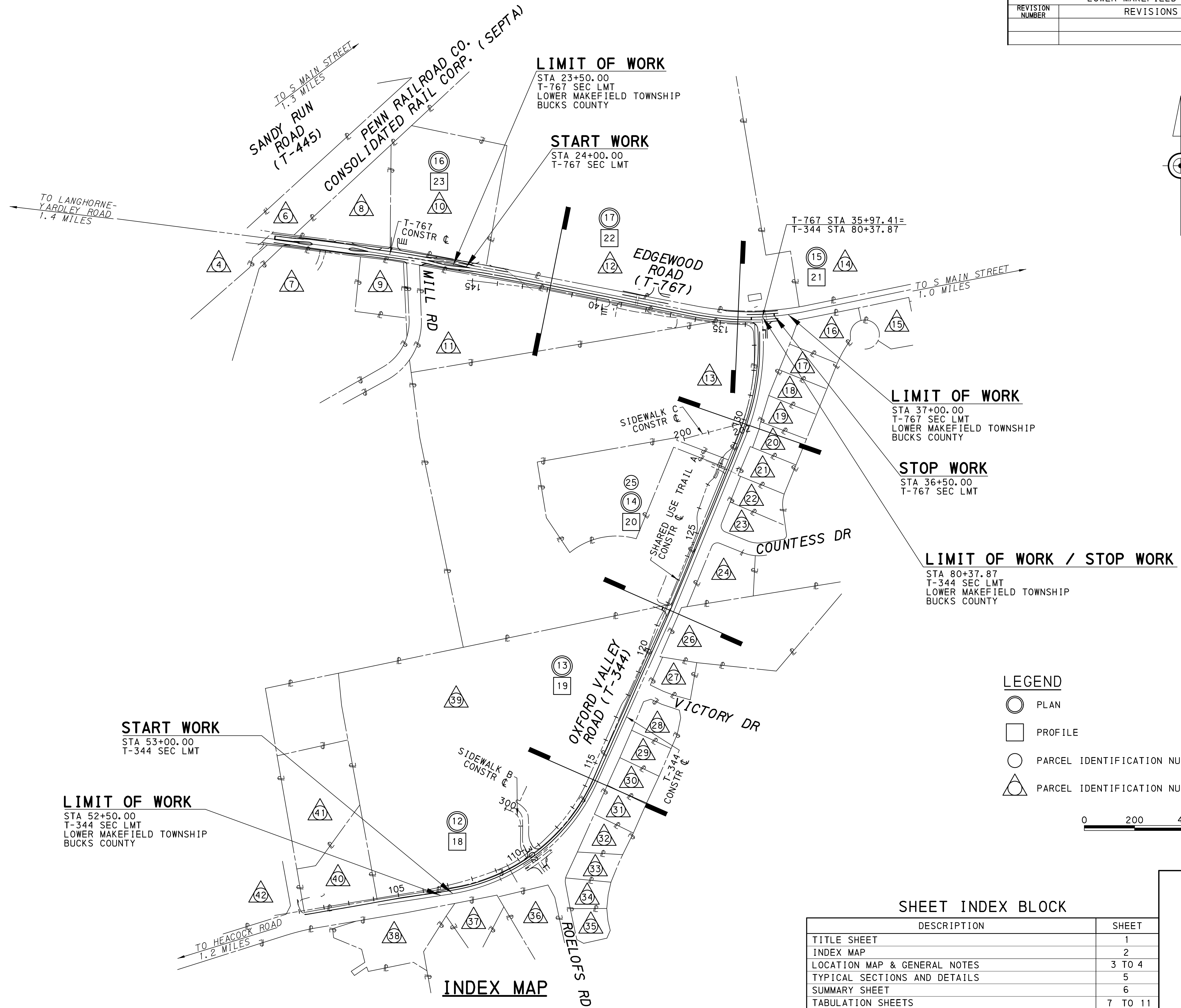
APPROVED DATE: _____

LOWER MAKEFIELD TOWNSHIP MANAGER

DISTRICT	COUNTY	ROUTE	SECTION	SHEET
6-0	BUCKS	0000	LMT	2 OF 23
LOWER MAKEFIELD TOWNSHIP				
REVISION NUMBER	REVISIONS	DATE	BY	

PROPERTY OWNERS

- 1 LOWER MAKEFIELD TOWNSHIP
- 2 TIMKO FAMILY ASSOC LP
- 3 CHARLES S & FRANCINE HARRIS
- 4 NEW YORK CENTRAL LINES LLC
- 5 CAROLINE E TIMKO
THERESA C TIMKO
- 6 NEW YORK CENTRAL LINES LLC
- 7 YARDLEY WATER CO
C/O PENNSYLVANIA AMERICAN WATER CO
- 8 LOWER MAKEFIELD TOWNSHIP
- 9 PATRICIA A HELBLE
- 10 LOWER MAKEFIELD TOWNSHIP
- 11 LOWER MAKEFIELD TOWNSHIP
- 12 LOWER MAKEFIELD TOWNSHIP
- 13 LOWER MAKEFIELD TOWNSHIP
- 14 PENNSBURY SCHOOL DISTRICT
- 15 JONATHON HILL & TANYA HILL
- 16 RICHARD J & HEATHER M KROTZ
- 17 KEITH T METZGER & WENDY G METZGER
- 18 JOHN & CATHERINE M TERRONI
- 19 STEVEN C BAKER & ERIN F BAKER
- 20 DIRETTO FAM IRREV TRUST
- 21 SHARI E RUGO & JOSEPH W CHORBA
- 22 JAREN M ARBANAS & NICOLET SCHLEIDER
- 23 ARNELL J SANTOS & MEGAN D SANTOS
- 24 CATHERINE V BEATH
- 25 YARDLEY WATER & POWER CO
- 26 PAUL D ALLEN & MARGARET M ALLEN
- 27 EDWARD & MARY A PAWLOSKI
- 28 TIMOTHY & LORRAINE MCHALE
- 29 ANTHONY J DESIMONE & MAUREEN C DESIMONE
- 30 SEAN F HORTON
- 31 WAYNE M & CHRISTINE M P HEATON
- 32 MATTHEW R & ROSEMARY SHEAHAN
- 33 GENE & ILENE B DOLNICK
- 34 BONNIE L KUBICKA
- 35 CAROLYN A ECHALK
- 36 JAMES R & ROSEMARIE V BOOTH
- 37 NORRIS G TURNER & DENISE M ARNAUD-TURNER
- 38 LOWER MAKEFIELD TOWNSHIP
- 39 LOWER MAKEFIELD TOWNSHIP
- 40 STEVEN & ELIZABETH MERRICK
- 41 WILLIAM V, III & NANCY J SHEEHY
- 42 MICHAEL R & KIMBERLY QUAIL



LEGEND

- PLAN
- PROFILE
- PARCEL IDENTIFICATION NUMBER
- PARCEL IDENTIFICATION NUMBER - NO TAKE

START WORK
STA 53+00.00
T-344 SEC LMT

LIMIT OF WORK
STA 52+50.00
T-344 SEC LMT
LOWER MAKEFIELD TOWNSHIP
BUCKS COUNTY

LIMIT OF WORK
STA 23+50.00
T-767 SEC LMT
LOWER MAKEFIELD TOWNSHIP
BUCKS COUNTY

START WORK
STA 24+00.00
T-767 SEC LMT

LIMIT OF WORK
STA 37+00.00
T-767 SEC LMT
LOWER MAKEFIELD TOWNSHIP
BUCKS COUNTY

STOP WORK
STA 36+50.00
T-767 SEC LMT

LIMIT OF WORK / STOP WORK
STA 80+37.87
T-344 SEC LMT
LOWER MAKEFIELD TOWNSHIP
BUCKS COUNTY

SHEET INDEX BLOCK

DESCRIPTION	SHEET
TITLE SHEET	1
INDEX MAP	2
LOCATION MAP & GENERAL NOTES	3 TO 4
TYPICAL SECTIONS AND DETAILS	5
SUMMARY SHEET	6
TABULATION SHEETS	7 TO 11
PLAN AND PROFILE SHEETS	12 TO 23

c:\pwork\lmg\proj\ectw\lmg\mbr\sch\d0592958\index.dgn
 10/21/2020 10:57:06 AM mbr:tsch

DISTRICT	COUNTY	ROUTE	SECTION	SHEET
6-0	BUCKS	0000	LMT	3 OF 23
LOWER MAKEFIELD TOWNSHIP				
REVISION NUMBER	REVISIONS	DATE	BY	

PUBLIC UTILITIES				
SYMBOL	OWNER	ADDRESS	REPRESENTATIVE	TELEPHONE
— E —	PECO ENERGY	450 S. HENDERSON ROAD SUITE B, KING OF PRUSSIA, PA 19406	BENJAMIN DUREY	215-956-3073
— W —	PENNSYLVANIA AMERICAN WATER	1145 EDGEWOOD ROAD, YARDLEY, PA 19067	JAMIE YAKES	215-493-3346
— CTV —	COMCAST CABLE COMMUNICATIONS, INC	190 SHOEMAKER ROAD, POTTSTOWN, PA 19464	MIKE KIMBERLY	610-327-6337
— T —	VERIZON PENNSYLVANIA, LLC	1050 VIRGINIA DRIVE, FORT WASHINGTON, PA 19034	SCOTT BEITER	267-667-3456
		SERIAL NO: 20200563041, 20200563086	PA ONE CALL	800-242-1776

TABULATION OF OVERALL & AUTHORIZATION LENGTH				
STATE ROUTE	STATION	FT	MI	COUNTY
T-344	52+50.00 TO 80+37.87	2787.87	0.528	BUCKS
T-767	23+50.00 TO 37+00.00	1350.00	0.256	BUCKS
SUB TOTALS				
TOTAL LENGTH		4137.87	FT	0.784
			MI	

TABULATION OF CONSTRUCTION LENGTH				
STATE ROUTE	STATION	FT	MI	COUNTY
T-344	53+00.00 TO 80+37.87	2737.87	0.519	BUCKS
T-767	24+00.00 TO 36+50.00	1250.00	0.237	BUCKS
SUB TOTALS				
TOTAL LENGTH		3987.87	FT	0.756
			MI	

EARTHWORK SUMMARY ENTIRE PROJECT									
THE INFORMATION ON ESTIMATED AMOUNTS OF EARTHWORK HAS BEEN USED IN THE PRELIMINARY ESTIMATE. DO NOT USE AS A WAIVER OF ANY PROVISIONS OF THE SPECIFICATIONS AND CONTRACTS.									
CUBIC YARDS OF EXCAVATION						CUBIC YDS OF COMPLETED EMBANKMENT*	CUBIC YDS OF BORROW EXCAVATION	CUBIC YDS OF SELECT BORROW	CUBIC YDS OF WASTE
CLASS 1	CLASS 1A	CLASS 1B	CLASS 2	CLASS 3	CLASS 4				
466		72				381			157

LIST OF EQUALITIES
T-767 STA 35+97.41=T-344 STA 80+37.87
SIDEWALK B STA 302+18.78 = SHARED USE TRAIL A STA 110+31.46
SIDEWALK C STA 202+39.48 = SHARED USE TRAIL A STA 129+83.92

LIST OF ABBREVIATIONS
NONE

NOTES:
* INCLUDES ALL BORROW ITEMS.

GENERAL NOTES

THE LEGAL RIGHT-OF-WAY FOR TOWNSHIP ROAD T-344 FROM STATION 52+50.00 TO STA 80+37.87 IS NOT DEPICTED FROM PLATS OR DESCRIBED IN FEE SIMPLE TRANSFERS. THE RIGHT-OF-WAY AS SHOWN HAS BEEN RECONSTRUCTED FROM DEED CALLS AND INTENT OF PRIOR CHAIN TITLES AND SURVEYS.

THE LEGAL RIGHT-OF-WAY FOR TOWNSHIP ROAD T-767 FROM STATION 23+50.00 TO STA 37+00.00 IS NOT DEPICTED FROM PLATS OR DESCRIBED IN FEE SIMPLE TRANSFERS. THE RIGHT-OF-WAY AS SHOWN HAS BEEN RECONSTRUCTED FROM DEED CALLS AND INTENT OF PRIOR CHAIN TITLES AND SURVEYS.

THE LEGAL SIDEWALK EASEMENT ON T-344 (OXFORD VALLEY ROAD), FROM STA 74+23.42 LT TO STA 74+53.43 LT, BASED ON DEDICATION OF EASEMENT FOR PUBLIC SIDEWALK RECORDED IN THE BUCKS COUNTY RECORDER OF DEEDS OFFICE ON _____ AS INSTRUMENT # _____

DO NOT INTERFERE WITH THE OPERATION OF ANY FIRE HYDRANT, FIRE CALL BOX OR POLICE CALL BOX.

THREE TO TEN WORKING DAYS PRIOR TO EXCAVATION BASED ON THE COMPLEXITY OF THE PROJECT, THE CONTRACTOR MUST CONTACT THE PA ONE CALL SYSTEM, INC., PHONE 1-800-242-1776, SERIAL NO. _____ AND _____ FOR LOWER MAKEFIELD TOWNSHIP. ADDITIONAL INFORMATION IS AVAILABLE AT <https://www.pa1call.org/PA811/Public/>.

THE CONTRACTOR IS REQUIRED TO NOTIFY THE DEPARTMENT AND SUBMIT AN ALLEGED VIOLATION REPORT (AVR) TO THE PA PUBLIC UTILITY COMMISSION THROUGH THE PA ONE CALL SYSTEM, WWW.PA1CALL.ORG, WITHIN TEN (10) BUSINESS DAYS AFTER A UTILITY LINE IS STRUCK, DAMAGED, OR PREVIOUS DAMAGE IS DISCOVERED AS REQUIRED BY PENNSYLVANIA'S UNDERGROUND UTILITY LINE PROTECTION LAW ACT 50 (P.L.852, NO. 287 AMENDED OCT. 30, 2017).

SIDEWALK EASEMENT. AN EASEMENT FOR THE CONSTRUCTION, INSPECTION, MAINTENANCE, REPAIR, RECONSTRUCTION, AND ALTERATION OF A SIDEWALK. THE EASEMENT SHALL NOT PREVENT THE PROPERTY OWNER FROM MAKING ANY LEGAL USE OF THE AREA WHICH IS NOT DETRIMENTAL TO ITS USE FOR SIDEWALK PURPOSES.

THE HORIZONTAL CONTROL IS TIED TO THE PENNSYLVANIA STATE COORDINATE SYSTEM (SOUTH ZONE), NORTH AMERICAN DATUM (NAD) 1983 (92).

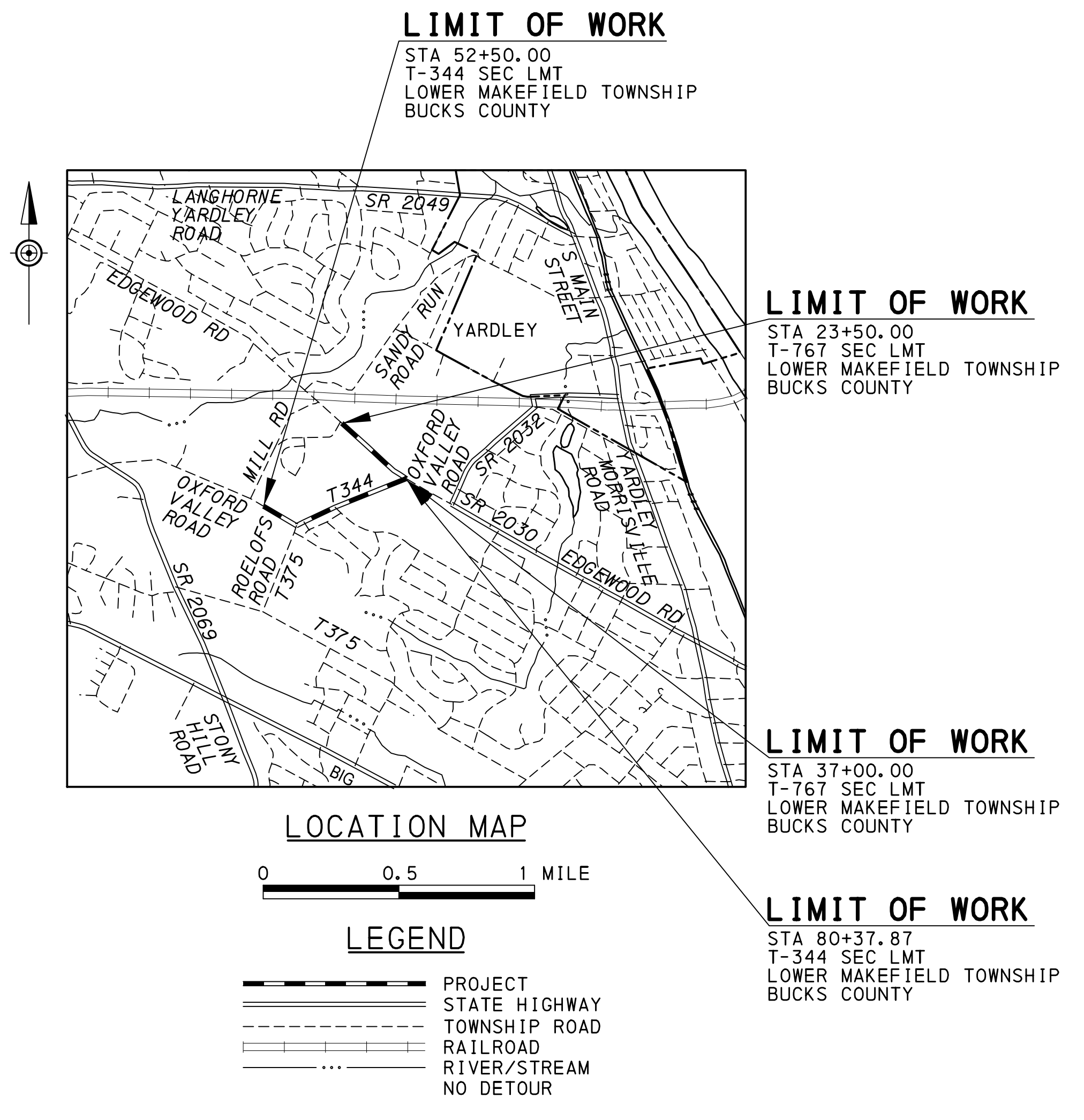
THE VERTICAL CONTROL IS BASED ON NORTH AMERICAN VERTICAL DATUM (NAVD 88).

AVERAGE COMBINED GRID FACTOR = 0.999965610733.

DETAILS, OTHER THAN THOSE INDICATED, ARE ON THE FOLLOWING STANDARD DRAWINGS.
RC - 10M JUNE 1, 2010 RC - 45M SEPTEMBER 15, 2016 TC - 8600 JUNE 13, 2013
RC - 13M JUNE 1, 2010 RC - 46M SEPTEMBER 15, 2016 TC - 8702B JUNE 13, 2013
RC - 30M JUNE 1, 2010 RC - 64M JUNE 1, 2010 TC - 8702C JUNE 13, 2013
RC - 31M JUNE 1, 2010 RC - 67M DECEMBER 17, 2019 TC - 8716 JUNE 13, 2013
RC - 32M JUNE 1, 2010 RC - 70M FEBRUARY 8, 2019 TC - 8717 JUNE 13, 2013
RC - 33M JUNE 1, 2010 RC - 72M FEBRUARY 8, 2019
RC - 35M JUNE 1, 2010 RC - 73M FEBRUARY 8, 2019
RC - 39M SEPTEMBER 15, 2016 RC - 75M JUNE 1, 2010

SUMMARY OF CONTROL POINT COORDINATES
BASED ON THE PENNSYLVANIA STATE PLANE COORDINATE SYSTEM (SOUTH ZONE) OF THE 2011 ADJUSTMENT OF THE NORTH AMERICAN DATUM OF 1983 (SPCS 83-NAD 83.2011).

RTE	STATION	POINT	COORDINATES		DESCRIPTION
			NORTH	EAST	
T-344 SURVEY & R/W B	47+33.73	11A	335370.2281	2779322.1086	MAG NAIL
	49+33.84	12	335403.2110	2779519.5160	MAG NAIL
	51+91.66	13	335451.2290	2779772.9820	MAG NAIL
	56+36.30	14	335574.7200	2780213.6070	MAG NAIL
	68+44.82	15	336661.6770	2780753.0160	R&C
	70+75.46	16	336878.3460	2780832.5560	MAG NAIL
	74+14.08	17	337172.2810	2781008.1070	R&C
	78+03.67	18	337547.9870	2781125.3100	R&C



LOCATION MAP AND GENERAL NOTES

c:\pwork\ing\proj\ect\ise\neer\sch\d0592958\locat ion.dgn
10/21/2020 10:57:15 AM mber:tsch

DISTRICT	COUNTY	ROUTE	SECTION	SHEET
6-0	BUCKS	0000	LMT	4 OF 23
LOWER MAKEFIELD TOWNSHIP				
REVISION NUMBER	REVISIONS	DATE	BY	

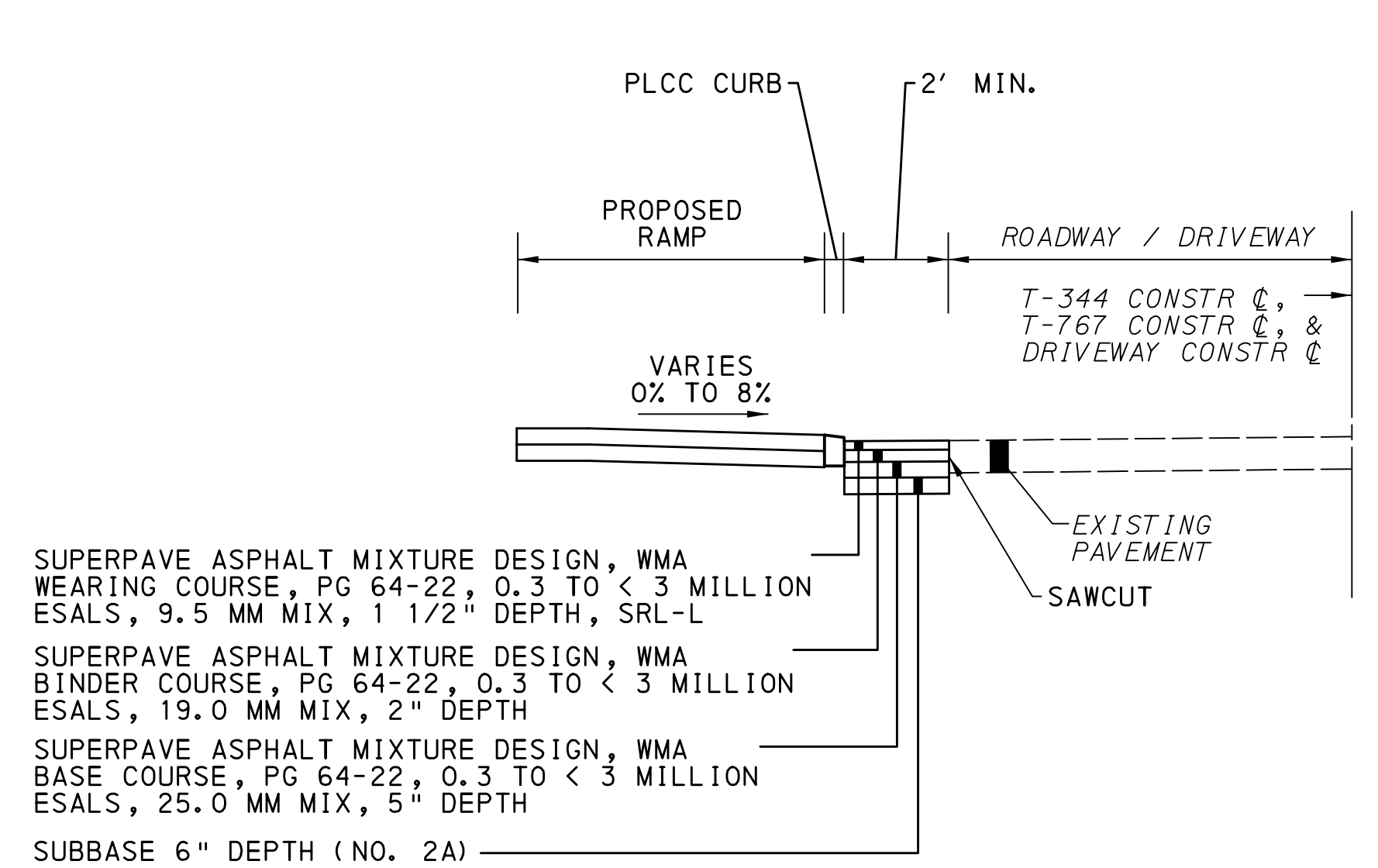
SUMMARY OF PROJECT COORDINATES
 BASED ON THE PENNSYLVANIA STATE PLANE COORDINATE SYSTEM
 (SOUTH ZONE) OF THE 2011 ADJUSTMENT OF THE NORTH AMERICAN DATUM OF 1983
 (SPCS 83-NAD 83.2011).

RTE	STATION	POINT	COORDINATES		BEARINGS
			NORTH	EAST	
SHARED USE TRAIL A CONSTR C	100+01.04	POB	335403.8515	2779169.2866	N80° 31' 31 "E
	105+92.33	PC	335501.1854	2779752.5066	
	106+23.89	PI	335506.3817	2779783.6429	N76° 54' 33 "E
	106+55.44	PT	335513.5315	2779814.3894	
	106+98.90	PC	335523.3745	2779856.7174	
	108+19.07	PI	335550.5938	2779973.7699	N67° 15' 39 "E
	109+38.68	PCC	335597.0463	2780084.6047	
	109+72.79	PI	335610.2328	2780116.0674	N54° 17' 09 "E
	110+06.62	PT	335630.1468	2780143.7662	
	110+83.85	PC	335675.2329	2780206.4772	N45° 33' 21 "E
	111+06.75	PI	335688.6001	2780225.0699	
	111+29.56	PT	335704.6344	2780241.4184	N24° 13' 16 "E
	111+65.47	PC	335729.7802	2780267.0569	
	112+93.94	PI	335819.7319	2780358.7710	N37° 12' 35 "E
	114+19.42	PT	335936.8863	2780411.4741	
	117+49.91	PC	336238.2807	2780547.0594	N24° 16' 48 "E
	117+61.30	PI	336248.6621	2780551.7296	
	117+72.58	PT	336257.7282	2780558.6136	N19° 38' 58 "E
	117+79.27	PC	336263.0565	2780562.6593	
	117+90.60	PI	336272.0811	2780569.5118	N28° 38' 20 "E
	118+01.84	PT	336282.4102	2780574.1712	
	119+76.42	PC	336441.5520	2780645.9596	N22° 17' 11 "E
	119+84.51	PI	336448.9229	2780649.2846	
	119+92.59	PT	336456.5381	2780652.0037	N4° 30' 36 "W
	120+97.00	PC	336554.8703	2780687.1139	
	121+16.65	PI	336573.3782	2780693.7223	N19° 36' 55 "E
	121+36.22	PT	336590.6262	2780703.1415	
	121+57.99	PC	336609.7298	2780713.5740	N46° 59' 00 "E
	121+99.61	PI	336646.2579	2780733.5220	
	122+41.14	PT	336684.7689	2780749.3058	N22° 13' 20 "E
	124+87.48	PC	336912.7018	2780842.7249	
	125+11.30	PI	336934.7424	2780851.7583	N51° 55' 25 "E
	125+34.25	PT	336958.4887	2780849.8853	
	125+49.52	PC	336973.7167	2780848.6842	N21° 21' 57 "E
	125+70.89	PI	336995.0204	2780847.0038	
	125+91.63	PT	337015.1502	2780854.1778	N3° 03' 00 "W
	126+89.80	PC	337107.6282	2780887.1357	
	127+04.41	PI	337121.3890	2780887.1357	N88° 20' 47 "W
	127+18.46	PT	337131.3552	2780902.7210	
	127+30.27	PC	337139.4129	2780911.3567	N78° 38' 24 "W
	127+43.44	PI	337148.3979	2780920.9864	
	127+56.20	PT	337160.5902	2780925.9675	N83° 20' 56 "W
	128+23.20	PC	337222.6121	2780951.3062	
	128+39.11	PI	337237.3399	2780957.3231	N85° 25' 11 "W
	128+54.31	PT	337247.1515	2780969.8469	
	128+64.55	PC	337253.4687	2780977.9103	
	128+80.94	PI	337263.5768	2780990.8126	
	128+96.55	PT	337278.8407	2780996.7840	
	129+62.13	PC	337339.9166	2781020.6773	
	131+38.46	PI	337504.1247	2781084.9167	
133+09.43	PT	337680.2014	2781075.5350		
133+48.94	PC	337719.6554	2781073.4328		
133+81.18	PI	337751.8483	2781071.7175		
134+01.05	PT	337752.7786	2781039.4923		
134+10.34	PC	337753.0467	2781030.2029		
135+20.72	PI	337756.2318	2780919.8686		
136+30.57	PT	337777.9736	2780811.6508		
142+20.55	PC	337894.1821	2780233.2354		
142+30.82	PI	337896.2068	2780223.1577		
142+41.09	PT	337897.3973	2780212.9478		
144+72.96	PC	337924.2526	2779982.6413		
144+96.81	PI	337927.0156	2779958.9465		
145+20.66	PT	337928.9206	2779935.1674		

RTE	STATION	POINT	COORDINATES		BEARINGS
			NORTH	EAST	
SIDEWALK B CONSTR C	300+00.00	POB	335828.5348	2780086.8348	S67° 19' 14 "E
	300+25.56	PC	335818.6793	2780110.4188	
	300+65.91	PI	335803.1210	2780147.6494	S0° 31' 20 "W
	300+96.61	PT	335762.7720	2780147.2817	
	301+69.19	PC	335690.1857	2780146.6202	S31° 52' 39 "E
	301+86.63	PI	335672.7551	2780146.4613	
	302+03.12	PT	335657.9527	2780155.6669	N75° 07' 46 "E
	302+32.02	POE	335633.4141	2780170.9274	
	200+00.00	POB	337298.8515	2780796.8875	N81° 15' 52 "E
	202+39.48	POE	337360.3101	2781028.3427	
T-344 CONSTR C	50+00.00	POB	335444.7729	2779580.0633	N24° 11' 24 "E
	52+92.84	PC	335489.2484	2779869.5059	
	57+08.30	PI	335552.3469	2780280.1459	N22° 21' 59 "E
	60+53.89	PT	335931.3255	2780450.3865	
	67+81.36	PI	336594.9167	2780748.4775	N6° 06' 09 "W
	71+00.67	PI	336890.2084	2780869.9853	
	75+39.99	PC	337296.4782	2781037.1587	S82° 37' 54 "E
	77+93.67	PI	337531.0722	2781133.6903	
	80+36.86	PT	337783.3131	2781106.7224	S78° 39' 09 "E
	10+00.00	POB	338173.2028	2778543.4181	
T-767 CONSTR C	18+11.50	PC	338069.1311	2779348.2177	N88° 36' 21 "E
	22+90.16	PI	338007.7444	2779822.9285	
	27+68.44	PT	337913.5640	2780292.2352	N79° 13' 47 "E
	33+27.61	PC	337803.5436	2780840.4742	
	34+50.05	PI	337779.4528	2780960.5202	N78° 17' 06 "E
	35+71.48	PCC	337782.4316	2781082.9235	
	36+61.41	PI	337784.6195	2781172.8259	
	37+50.94	PCC	337801.4246	2781261.1709	
	37+59.98	PI	337803.1143	2781270.0539	
	37+69.02	PT	337804.9503	2781278.9078	
41+96.18	POE	337891.6831	2781697.1725		

NOTE: FOUR (4) PLACE COORDINATES ARE USED FOR COMPUTATIONAL PURPOSES ONLY AND DO NOT IMPLY A PRECISION BEYOND TWO (2) PLACES.

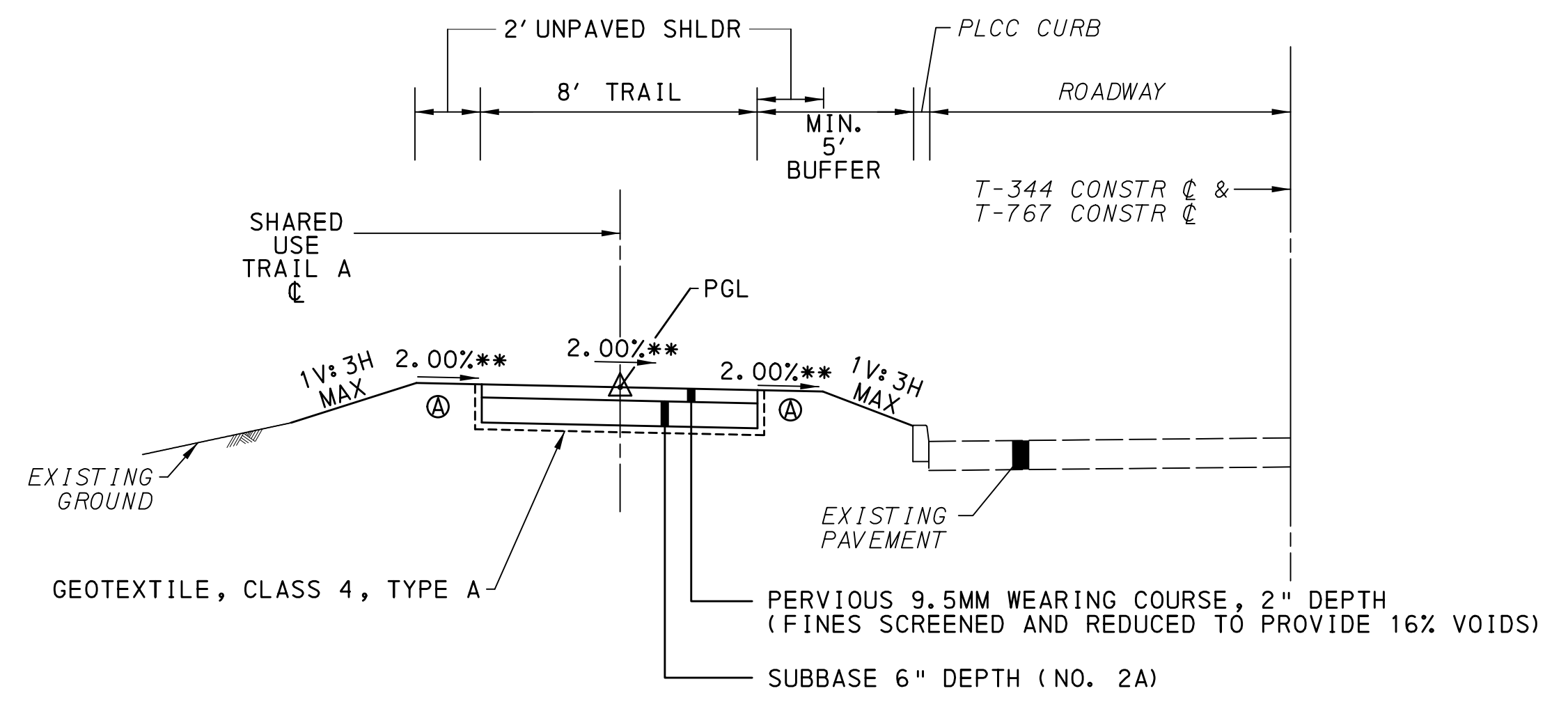
DISTRICT	COUNTY	ROUTE	SECTION	SHEET
6-0	BUCKS	0000	LMT	5 OF 23
LOWER MAKEFIELD TOWNSHIP				
REVISION NUMBER	REVISIONS	DATE	BY	



CURB REPLACEMENT DETAIL

NOT TO SCALE

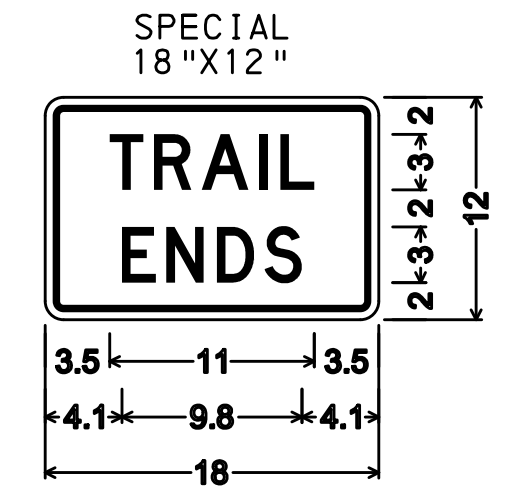
NOTE - PAVEMENT REPLACEMENT IS INCIDENTAL TO ITEM 4630-0010



SHARED USE TRAIL A TYPICAL SECTION

** TRAIL SLOPES AWAY FROM ROADWAY
STA 121+89.00 TO STA 132+15.00
STA 134+30.00 TO STA 138+05.00
STA 140+25.00 TO STA 144+35.00

STA 110+29.00 TO STA 110+46.00
STA 110+77.00 TO STA 121+63.00
STA 121+89.00 TO STA 139+15.00
STA 139+47.00 TO STA 144+35.00
NOT TO SCALE



1.0" Radius, 0.4" Border, 0.4" Indent, Black on Yellow;

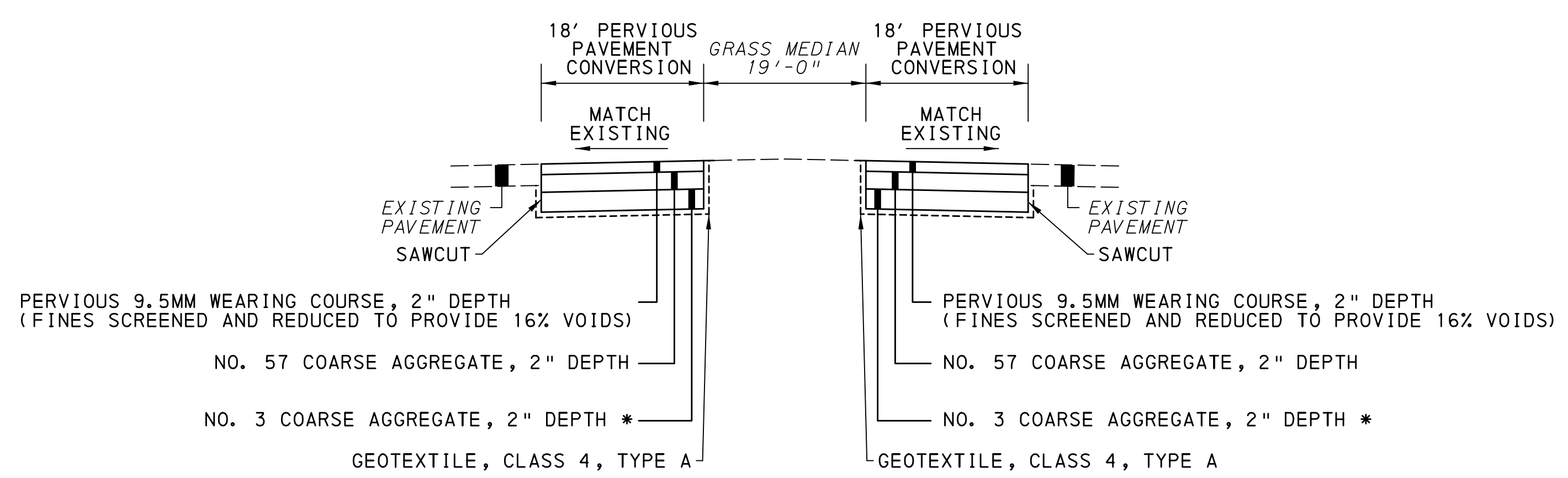
"TRAIL" D;

"ENDS" D;

Table of distances between letter and object lefts.

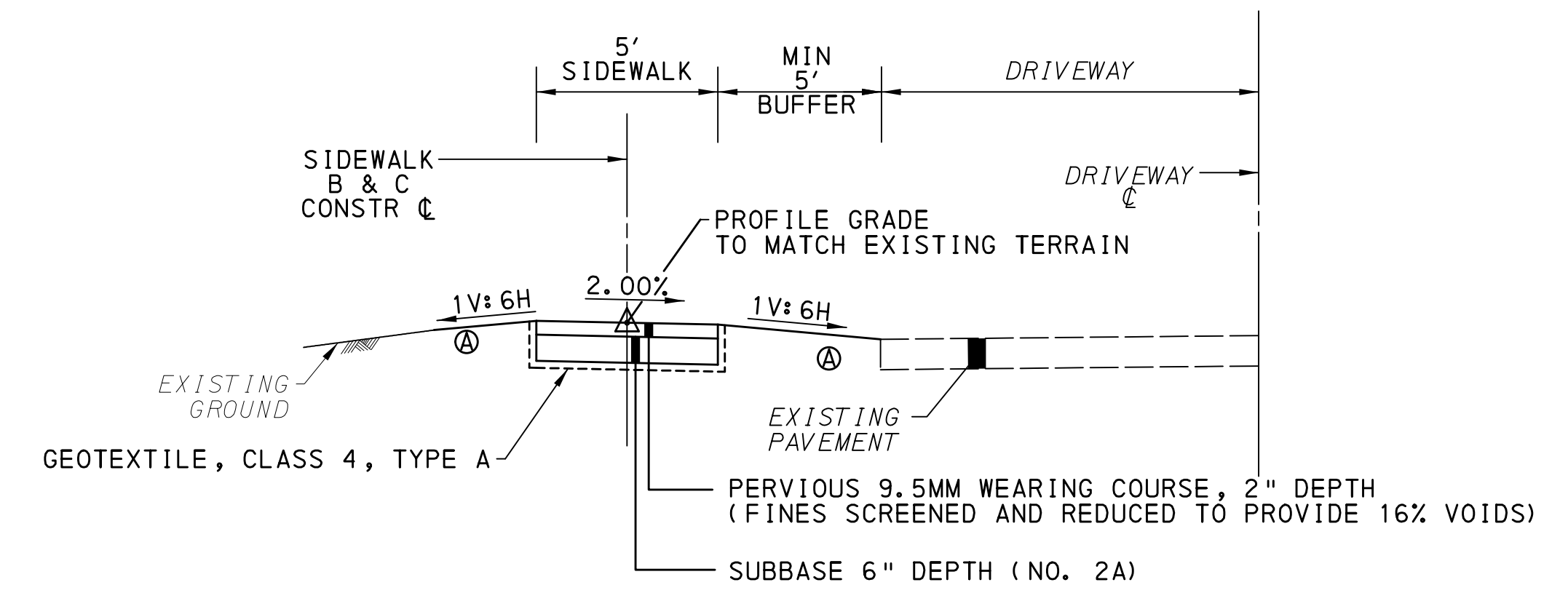
	T	R	A	I	L	
3.5	2.4	2.5	3.1	1.2	1.8	3.5
4.1	2.4	2.8	2.5	2.1	4.1	

NOT TO SCALE



PERVIOUS PAVEMENT PARKING LOT CONVERSION TYPICAL SECTION

NOT TO SCALE



SIDEWALK B & C TYPICAL SECTION

SIDEWALK A: STA 300+21.00 TO STA 302+09.00
SIDEWALK B: STA 200+70.00 TO STA 202+39.00
NOT TO SCALE

TYPICAL SECTIONS AND DETAILS

c:\pwworking\proj\ectwise\mber\sch\d0592958\typ\loc\loc01.dgn 10/21/2020 10:57:46 AM mber:tsch

ⓐ ALL SEEDING AND SOIL SUPPLEMENT PER PUBLICATION 408.

* IF EXISTING MATERIAL DEPTHS ARE GREATER IN FIELD, MATCH EXISTING DEPTHS

SUMMARY

REVISION NO	REVISIONS	DATE	BY	DISTRICT	COUNTY	ROUTE	SECTION	SHEET
				06	BUCKS	0000	LMT	6 OF 23
LOWER MAKEFIELD TWP								

◆ - SEE SPECIAL PROVISIONS

QUANTITY	ITEM NO	DESCRIPTION	DESIGN NO	FOR TAB SEE SHEET	QUANTITY	ITEM NO	DESCRIPTION	DESIGN NO	FOR TAB SEE SHEET	QUANTITY	ITEM NO	DESCRIPTION	DESIGN NO	FOR TAB SEE SHEET	QUANTITY	ITEM NO	DESCRIPTION	DESIGN NO	FOR TAB SEE SHEET
	UNIT					UNIT					UNIT					UNIT			
	0201 0001 LS	CLEARING AND GRUBBING		NO TAB	5	0804 0006 LB	SEEDING AND SOIL SUPPLEMENTS - FORMULA L, INCLUDING MULCH		9	43	0954 0153 LF	TRENCH AND BACKFILL, TYPE III		TSP					
401	0203 0001 CY	CLASS 1 EXCAVATION		7,8	624	0806 0113 SY	TEMPORARY SHORT-TERM, ROLLED EROSION CONTROL PRODUCT, TYPE 2D		9	452	0954 0201 LF	SIGNAL CABLE, 14 AWG, 3 CONDUCTOR		TSP					
72	0203 0004 CY	CLASS 1B EXCAVATION		7,8	280	0810 0026 LF	TREE TRIMMING TO A MAX HEIGHT OF 20'		7,8	2	0954 0302 EACH	JUNCTION BOX, JB-27		TSP					
223	0203 0006 LF	SAW CUTTING		7,8	7	0810 0052 EACH	SELECTIVE TREE REMOVAL		7,8	1	0954 0403 EACH	ELECTRICAL SERVICE, TYPE C		TSP					
4053	0212 0014 SY	GEOTEXTILE, CLASS 4, TYPE A		7,8	4	0849 0010 EACH	ROCK CONSTRUCTION ENTRANCE		9	4	0955 3722 EACH	LED COUNTDOWN PEDESTRIAN SIGNAL HEAD, TYPE A		TSP					
3149	0350 0106 SY	SUBBASE 6" DEPTH (NO. 2A)		7,8	1	0855 0003 EACH	PUMPED WATER FILTER BAG		9	4	0956 0500 EACH	PEDESTRIAN PUSH BUTTON		TSP					
428	0420 0002 TON	PERVIOUS 9.5MM WEARING COURSE		7,8	1	0855 0004 EACH	REPLACEMENT PUMPED WATER FILTER BAG		9	168	0960 0008 LF	8" WHITE HOT THERMOPLASTIC PAVEMENT MARKINGS		10,11					
24	0490 0001 SY	REMOVAL OF EXISTING ASPHALT SURFACE COURSE		7,8	10	0860 0002 EACH	INLET FILTER BAG FOR TYPE C INLET		9	692	0960 0021 LF	24" WHITE HOT THERMOPLASTIC PAVEMENT MARKINGS		10,11					
	0608 0001 LS	MOBILIZATION		NO TAB	2889	0867 0012 LF	COMPOST FILTER SOCK, 12" DIAMETER		9	2	0960 0111 EACH	WHITE HOT THERMOPLASTIC LEGEND, "X ING", 8' - 0"		10,11					
	0609 0009 LS	EQUIPMENT PACKAGE		NO TAB		0901 0001 LS	MAINTENANCE AND PROTECTION OF TRAFFIC DURING CONSTRUCTION		NO TAB	2	0960 0112 EACH	WHITE HOT THERMOPLASTIC LEGEND, "PED", 8' - 0"		10,11					
547	4630 0010 LF	PLAIN CEMENT CONCRETE CURB, INCLUDING REMOVAL OF EXISTING CURB AND PAVEMENT RESTORATION		7,8	100	0901 0231 DAY	ADDITIONAL WARNING LIGHTS, TYPE B		TCP	2	0960 0142 EACH	WHITE HOT THERMOPLASTIC LEGEND, "AHEAD", 8' - 0"		10,11					
265	4676 0001 SY	CEMENT CONCRETE SIDEWALK, INCLUDING EXCAVATION AND ROADSIDE DEVELOPMENT		7,8	100	0901 0240 SF	ADDITIONAL TRAFFIC CONTROL SIGNS		TCP	32	0960 0257 LF	WHITE HOT THERMOPLASTIC LEGEND, "YIELD LINE", 24" X 36" TRIANGLE, (MIN 4 TRIANGLES PER LINE)		10,11					
	0686 0010 LS	CONSTRUCTION SURVEYING, TYPE A		NO TAB	334	0910 4116 LF	AWG 8 UNDERGROUND CABLE, COPPER, 1 CONDUCTOR		TSP	396	0962 1000 LF	4" WHITE WATERBORNE PAVEMENT MARKINGS		10,11					
	0688 0020 LS	MICROCOMPUTER, TYPE C		NO TAB	152	0931 0001 SF	POST MOUNTED SIGNS, TYPE B		10,11, TSP	504	0963 0001 SF	PAVEMENT MARKING REMOVAL		10,11					
	0689 0001 LS	NARRATIVE SCHEDULE		NO TAB	55	0935 0001 SF	POST MOUNTED SIGNS, TYPE F		10,11	2	9000 0001 EACH	LED LUMINAIRE, ARM MOUNT		TSP					
1000	0690 0001 DOLLA	INTERNAL FACILITATION		NO TAB	111	0936 0200 SF	STRUCTURE MOUNTED FLAT SHEET ALUMINUM SIGNS		TSP	1	9000 0002 EACH	RECTANGULAR RAPID FLASHING BEACON SYSTEM		TSP					
EITHER 234	0695 0004 SF	DETECTABLE WARNING SURFACE, POLYMER COMPOSITE	1	7,8	2	0941 0001 EACH	RESET POST MOUNTED SIGNS, TYPE B		10,11		9000 0003 LS	REMOVE EXISTING PEDESTRIAN EQUIPMENT		TSP					
OR ---	0695 0002 SF	DETECTABLE WARNING SURFACE, CAST IRON	1	7,8	1	0942 0002 EACH	RESET POST MOUNTED SIGNS, TYPE C		10,11	1	9000 0004 EACH	CONTROLLER TIMING MODIFICATION IN FIELD		TSP					
OR ---	0695 0003 SF	DETECTABLE WARNING SURFACE, POLYMER CONCRETE	1	7,8	1	0951 2140 EACH	TRAFFIC SIGNAL SUPPORT, 40' MAST ARM WITH LUMINAIRE ARM (30' MOUNTING HEIGHT)		TSP	1	9000 0005 EACH	COVID-19 SAFETY PLAN SIGN		NO TAB					
24	0703 0025 CY	NO. 57 COARSE AGGREGATE		7,8	1	0951 3802 EACH	TRAFFIC SIGNAL SUPPORT, STRAIN POLE WITH LUMINAIRE ARM (30' MOUNTING HEIGHT) 2,000 POUNDS DESIGN TENSION		TSP	2	9000 1104 EACH	PROFESSIONAL SERVICES		7,8					
24	0703 0026 CY	NO. 3 COARSE AGGREGATE		7,8	4	0951 4022 EACH	PEDESTRIAN STUB POLE, TYPE B		TSP	10	9000 1592 TON	ROADWAY ASPHALT ADJUSTMENT, SUPERPAVE ASPHALT MIXTURE DESIGN, WMA WEARING COURSE, PG 64-22, 0.3 TO < 3 MILLION ESALS, 9.5 MM MIX, SRL		7,8					
270	0803 0001 CY	PLACING STOCKPILED TOPSOIL		7,8	123	0954 0012 LF	2 INCH CONDUIT		TSP	18	9694 6002 EACH	DESIGN OF CONCRETE CURB RAMPS, DISTRICT 6		7,8					
279	0804 0001 LB	SEEDING AND SOIL SUPPLEMENTS - FORMULA B, INCLUDING MULCH		9	75	0954 0013 LF	3 INCH CONDUIT		TSP										
63	0804 0004 LB	SEEDING - FORMULA E, INCLUDING MULCH		9	107	0954 0151 LF	TRENCH AND BACKFILL, TYPE I		TSP										

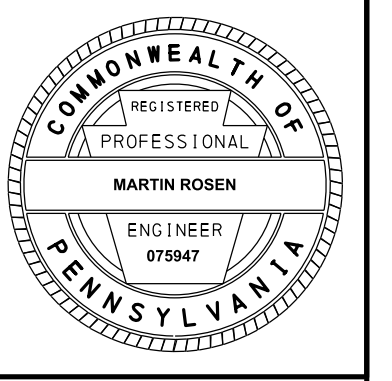


TABULATION OF QUANTITIES

ROADWAY

REVISION NO	REVISIONS	DATE	BY	DISTRICT	COUNTY	ROUTE	SECTION	SHEET
				06	BUCKS	0000	LMT	7 OF 23
LOWER MAKEFIELD TWP								

(+) SEE SUMMARY SHEET FOR COMPLETE ITEM NUMBERS



CLASS 1 EXCAVATION	CLASS 1B EXCAVATION	SAW CUTTING	GEOTEXTILE, CLASS 4, TYPE A	SUBBASE 6" DEPTH (NO. 2A)	PERVIOUS 9.5MM WEARING COURSE	REMOVAL OF EXISTING ASPHALT SURFACE COURSE	PLAIN CEMENT CONCRETE CURB, INCLUDING REMOVAL OF EXISTING CURB AND PAVEMENT RESTORATION	CEMENT CONCRETE SIDEWALK, INCLUDING EXCAVATION AND ROADSIDE DEVELOPMENT	DESIGN NO. 1	NO. 57 COARSE AGGREGATE	NO. 3 COARSE AGGREGATE	PLACING STOCKPILED TOPSOIL	TREE TRIMMING TO A MAX HEIGHT OF 20'	SELECTIVE TREE REMOVAL	PROFESSIONAL SERVICES	ROADWAY ASPHALT ADJUSTMENT, SUPERPAVE ASPHALT MIXTURE DESIGN, WMA WEARING COURSE, PG 64-22, 0.3 TO < 3 MILLION ESALS, 9.5 MM MIX, SRL-	DESIGN OF CONCRETE CURB RAMPS, DISTRICT 6	EMBANKMENT (FOR INFORMATION ONLY)	REMARKS	SIDE	STATIONS			
0203 0001 CY	0203 0004 CY	0203 0006 LF	0212 0014 SY	0350 0106 SY	0420 0002 TON	0490 0001 SY	4630 0010 LF	4676 0001 SY	0695 (+) SF	0703 0025 CY	0703 0026 CY	0803 0001 CY	0810 0026 LF	0810 0052 EACH	9000 1104 EACH	9000 1592 TON	9694 6002 EACH	CY	ITEM NUMBER	UNIT				
																					SHARED USE TRAIL A			
												270			2							ENTIRE PROJECT		107+00.00 to 144+50.00
														5		10						AS DIRECTED		107+00.00 to 144+50.00
													80									LT	107+29.00 to 107+91.00	
														1								LT	110+38.00	
													200									LT	111+52.00 to 113+30.00	
														1								LT	118+24.00	
							30	11	16								1					ADA RAMP LOCATION	CL	110+38.00
	72	216	432		52					24	24											SOFTBALL COMPLEX PARKING LOT	LT	110+63.00 to 112+07.00
							29	13	16								1					ADA RAMP LOCATION	CL	110+82.00
48			1103	942	112													141				LT / RT	110+93.00 to 121+52.00	
							23	10	16								1					ADA RAMP LOCATION	CL	121+58.00
							24	11	16								1					ADA RAMP LOCATION	CL	121+95.00
214			1709	1456	173													228				LT / RT	122+01.00 to 138+39.00	
10			61	52	7													1				LT / RT	138+44.00 to 139+03.00	
							24	11	16								1					ADA RAMP LOCATION	CL	139+11.00
							24	11	16								1					ADA RAMP LOCATION	CL	139+52.00
52			493	428	51													11				LT / RT	139+60.00 to 144+35.00	
		7																				MATCHING EXISTING TRAIL	LT / RT	144+35.00
																						SIDEWALK B		
25			138	108	13																	LT / RT	300+21.00 to 302+15.00	
																						SIDEWALK C		
21			117	92	11																	LT / RT	200+70.00 to 202+39.00	
																						T-344 OXFORD VALLEY ROAD		
							13	13	10								1					ADA RAMP LOCATION	RT	56+28.00
							11	11	10								1					ADA RAMP LOCATION	LT	56+34.00
							14	15	10								1					ADA RAMP LOCATION	RT	56+42.00
							15	28	10								1					ADA RAMP LOCATION	RT	56+89.00

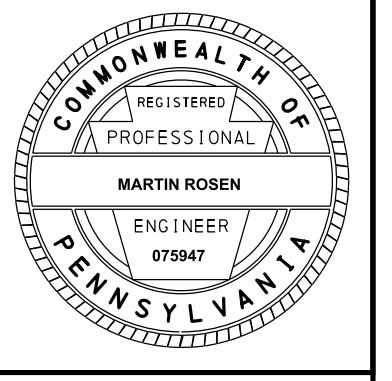
TABULATION OF QUANTITIES

EROSION AND SEDIMENT POLLUTION CONTROL

REVISION NO	REVISIONS	DATE	BY	DISTRICT	COUNTY	ROUTE	SECTION	SHEET
				06	BUCKS	0000	LMT	9 OF 23
LOWER MAKEFIELD TWP								

SEEDING AND SOIL SUPPLEMENTS - FORMULA B, INCLUDING MULCH		SEEDING - FORMULA E, INCLUDING MULCH		SEEDING AND SOIL SUPPLEMENTS - FORMULA L, INCLUDING MULCH		TEMPORARY SHORT-TERM, ROLLED EROSION CONTROL PRODUCT, TYPE 2D		ROCK CONSTRUCTION ENTRANCE		PUMPED WATER FILTER BAG		REPLACEMENT PUMPED WATER FILTER BAG		INLET FILTER BAG FOR TYPE C INLET		COMPOST FILTER SOCK, 12" DIAMETER		REMARKS	SIDE	STATIONS	
0804 0001 LB	0804 0004 LB	0804 0006 LB	0806 0113 SY	0849 0010 EACH	0855 0003 EACH	0855 0004 EACH	0860 0002 EACH	0867 0012 LF	ITEM NUMBER	UNIT											
SHARED USE TRAIL A																					
279		5															2889			ENTIRE PROJECT	107+00.00 to 144+50.00
	63					1				1										AS DIRECTED	107+00.00 to 144+50.00
				1																	CL 110+78.00 to 111+78.00
															1						RT 115+24.00
															1						RT 117+90.00
															1						RT 119+30.00
															1						RT 120+19.00
			47																		LT 126+60.00 to 127+69.00
			49																		RT 126+60.00 to 127+69.00
				1																	CL 126+99.00 to 128+59.00
			112																		LT 128+10.00 to 129+66.00
			18																		LT 128+41.00 to 129+29.00
			14																		RT 129+30.00 to 129+71.00
			139																		LT 129+89.00 to 131+30.00
			35																		RT 129+93.00 to 130+70.00
			6																		RT 131+25.00 to 131+40.00
			73																		LT 131+95.00 to 132+95.00
															1						RT 132+06.00
															1						RT 133+56.00
			54																		LT 134+85.00 to 136+10.00
			17																		LT 137+30.00 to 137+90.00
															1						RT 137+58.00
																					CL 138+15.00 to 139+15.00
				1																	CL 138+15.00 to 139+15.00
				1																	CL 139+46.00 to 140+54.00
															1						RT 139+58.00
TOTALS																					

SEEDING AND SOIL SUPPLEMENTS - FORMULA B, INCLUDING MULCH		SEEDING - FORMULA E, INCLUDING MULCH		SEEDING AND SOIL SUPPLEMENTS - FORMULA L, INCLUDING MULCH		TEMPORARY SHORT-TERM, ROLLED EROSION CONTROL PRODUCT, TYPE 2D		ROCK CONSTRUCTION ENTRANCE		PUMPED WATER FILTER BAG		REPLACEMENT PUMPED WATER FILTER BAG		INLET FILTER BAG FOR TYPE C INLET		COMPOST FILTER SOCK, 12" DIAMETER		REMARKS	SIDE	STATIONS	
0804 0001 LB	0804 0004 LB	0804 0006 LB	0806 0113 SY	0849 0010 EACH	0855 0003 EACH	0855 0004 EACH	0860 0002 EACH	0867 0012 LF	ITEM NUMBER	UNIT											
279	63	5																			TOTALS



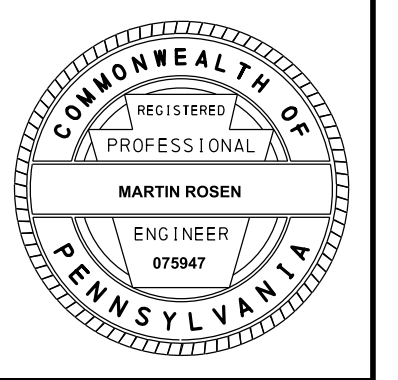
TABULATION OF QUANTITIES

SIGNING AND PAVEMENT MARKING PLAN

REVISION NO	REVISIONS	DATE	BY	DISTRICT	COUNTY	ROUTE	SECTION	SHEET
				06	BUCKS	0000	LMT	10 OF 23
LOWER MAKEFIELD TWP								



POST MOUNTED SIGNS, TYPE B	POST MOUNTED SIGNS, TYPE F	RESET POST MOUNTED SIGNS, TYPE B	RESET POST MOUNTED SIGNS, TYPE C	8" WHITE HOT THERMOPLASTIC PAVEMENT MARKINGS	24" WHITE HOT THERMOPLASTIC PAVEMENT MARKINGS	WHITE HOT THERMOPLASTIC LEGEND, "X ING", 8'-0"	WHITE HOT THERMOPLASTIC LEGEND, "PED", 8'-0"	WHITE HOT THERMOPLASTIC LEGEND, "AHEAD", 8'-0"	WHITE HOT THERMOPLASTIC LEGEND, "YIELD LINE", 24" X 36" TRIANGLE, (MIN 4 TRIANGLES PER LINE)	4" WHITE WATERBORNE PAVEMENT MARKINGS	PAVEMENT MARKING REMOVAL	REMARKS	SIDE	STATIONS
T-344 OXFORD VALLEY ROAD														
						1	1	1					RT	53+01.00 to 53+89.00
9												W11-15	RT	53+26.00
	3											W16-103P	RT	53+26.00
					56								RT	55+57.00 to 55+99.00
					96							CROSSWALK	LT / RT	56+24.00 to 56+38.00
1.5												"TRAIL ENDS" SPECIAL	LT	56+31.00
					104							CROSSWALK	RT	56+38.00 to 56+92.00
6.25												W11-15	LT	56+40.00
	2											W16-7P	LT	56+40.00
		1										R1-1	LT	56+49.00
				72								CROSSWALK	LT	56+49.00 to 56+85.00
				16								STOP BAR	LT	56+50.00 to 56+67.00
										396		PARKING LOT AREA	LT	56+71.00 to 58+17.00
6.25												W11-15	RT	56+88.00
	2											W16-7P	RT	56+88.00
6.25												W11-15	LT	56+91.00
	2											W16-7P	LT	56+91.00
6.25												W11-15	LT	57+05.00
	1.5											W11-15P	LT	57+05.00
					52								LT	57+31.00 to 57+74.00
						1	1	1					LT	58+61.00 to 59+50.00
9												W11-15	LT	59+25.00
	3											W16-103P	LT	59+25.00
2.25												R1-1	LT	67+81.00
				56								CROSSWALK	LT	67+88.00 to 68+12.00
2.25												R1-1	LT	68+17.00
				78							78	CROSSWALK	LT / RT	79+92.00 to 80+01.00

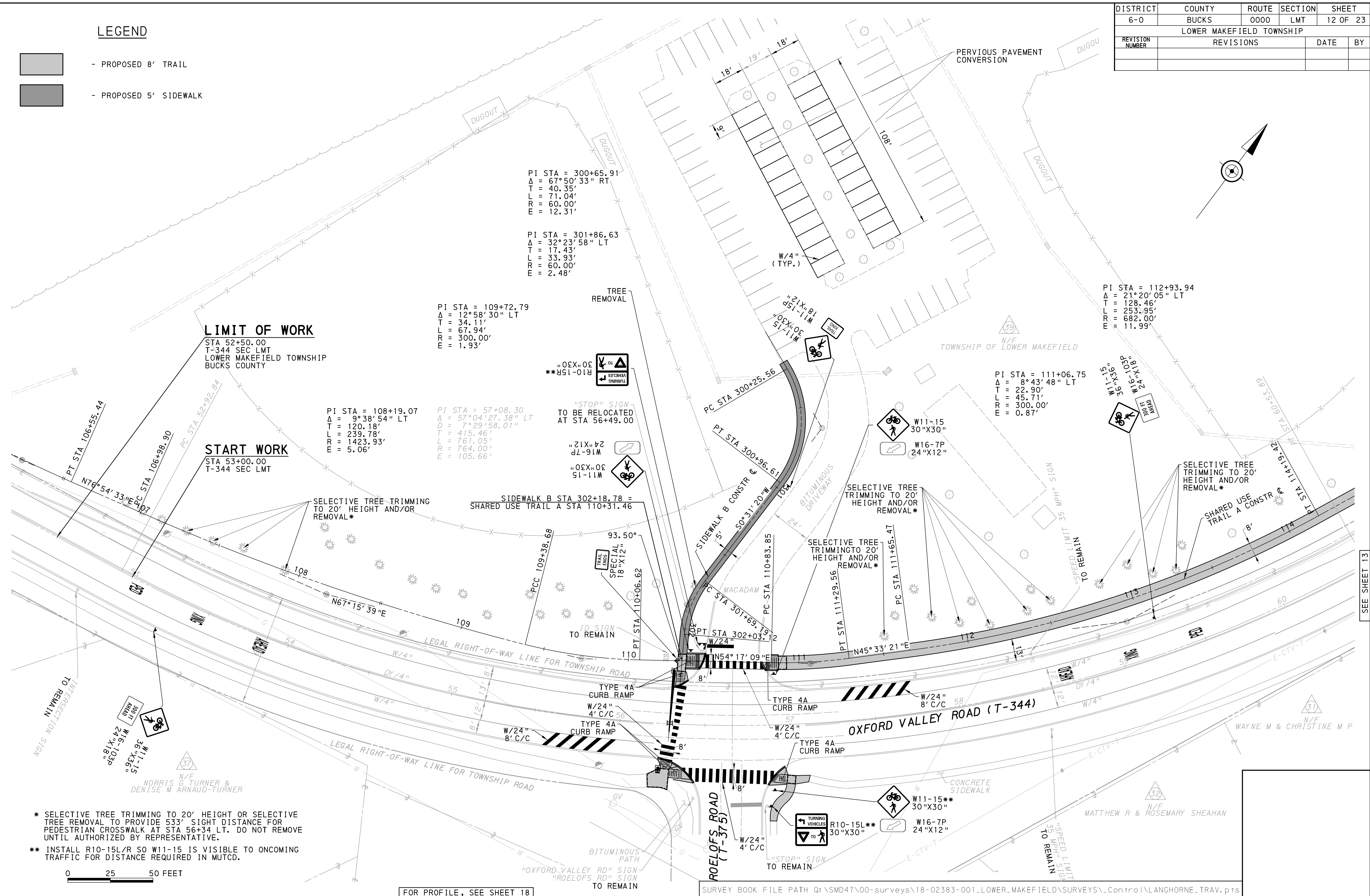
POST MOUNTED SIGNS, TYPE B	POST MOUNTED SIGNS, TYPE F	RESET POST MOUNTED SIGNS, TYPE B	RESET POST MOUNTED SIGNS, TYPE C	8" WHITE HOT THERMOPLASTIC PAVEMENT MARKINGS	24" WHITE HOT THERMOPLASTIC PAVEMENT MARKINGS	WHITE HOT THERMOPLASTIC LEGEND, "X ING", 8'-0"	WHITE HOT THERMOPLASTIC LEGEND, "PED", 8'-0"	WHITE HOT THERMOPLASTIC LEGEND, "AHEAD", 8'-0"	WHITE HOT THERMOPLASTIC LEGEND, "YIELD LINE", 24" X 36" TRIANGLE, (MIN 4 TRIANGLES PER LINE)	4" WHITE WATERBORNE PAVEMENT MARKINGS	PAVEMENT MARKING REMOVAL	REMARKS	SIDE	STATIONS
T-767 EDGEWOOD ROAD														
	6.25											W11-2	RT	23+74.00
9									8				RT	24+82.00 to 24+85.00
												R1-5L	RT	24+86.00
6.25												W11-2	LT	25+05.00
	2											W16-7P	LT	25+05.00
6.25												W11-2	RT	25+06.00
	2											W16-7P	RT	25+06.00
				80							160	CROSSWALK	LT / RT	25+08.00 to 25+17.00
6.25												W11-2	LT	25+19.00
	2											W16-7P	LT	25+19.00
6.25												W11-2	RT	25+19.00
	2											W16-7P	RT	25+19.00
9												R1-5L	LT	25+34.00
									8				LT	25+35.00 to 25+38.00
	6.25											W11-2	LT	25+92.00
6.25												"ROBERT STODDART FIELDS LOWER MAKEFIELD TOWNSHIP"	RT	26+43.00
		1										R2-1, 25 MPH	LT	28+75.00
	6.25											W11-2	RT	29+44.00
									8				RT	29+78.00 to 29+81.00
2.25												R1-1	RT	29+80.00
9												R1-5L	RT	29+81.00
												CROSSWALK	RT	29+87.00 to 30+21.00
2.25												R1-1	RT	30+28.00
6.25												W11-2	LT	30+30.00
	2											W16-7P	LT	30+30.00
6.25												W11-2	RT	30+32.00
	2											W16-7P	RT	30+32.00



DISTRICT	COUNTY	ROUTE	SECTION	SHEET
6-0	BUCKS	0000	LMT	12 OF 23
LOWER MAKEFIELD TOWNSHIP				
REVISION NUMBER	REVISIONS	DATE	BY	

LEGEND

-  - PROPOSED 8' TRAIL
-  - PROPOSED 5' SIDEWALK



LIMIT OF WORK

STA 52+50.00
T-344 SEC LMT
LOWER MAKEFIELD TOWNSHIP
BUCKS COUNTY

START WORK

STA 53+00.00
T-344 SEC LMT

PI STA = 109+72.79
Δ = 12°58'30" LT
T = 34.11'
L = 67.94'
R = 300.00'
E = 1.93'

PI STA = 108+19.07
Δ = 9°38'54" LT
T = 120.18'
L = 239.78'
R = 1423.93'
E = 5.06'

PI STA = 57+08.30
Δ = 57°04'27.38" LT
D = 7°29'58.01"
T = 415.46'
L = 761.05'
R = 764.00'
E = 105.66'

PI STA = 300+65.91
Δ = 67°50'33" RT
T = 40.35'
L = 71.04'
R = 60.00'
E = 12.31'

PI STA = 301+86.63
Δ = 32°23'58" LT
T = 17.43'
L = 33.93'
R = 60.00'
E = 2.48'

PI STA = 112+93.94
Δ = 21°20'05" LT
T = 128.46'
L = 253.95'
R = 682.00'
E = 11.99'

PI STA = 111+06.75
Δ = 8°43'48" LT
T = 22.90'
L = 45.71'
R = 300.00'
E = 0.87'

* SELECTIVE TREE TRIMMING TO 20' HEIGHT OR SELECTIVE TREE REMOVAL TO PROVIDE 533' SIGHT DISTANCE FOR PEDESTRIAN CROSSWALK AT STA 56+34 LT. DO NOT REMOVE UNTIL AUTHORIZED BY REPRESENTATIVE.
** INSTALL R10-15L/R SO W11-15 IS VISIBLE TO ONCOMING TRAFFIC FOR DISTANCE REQUIRED IN MUTCD.



FOR PROFILE, SEE SHEET 18



SURVEY BOOK FILE PATH Q:\SMD47\00-surveys\18-02383-001-LOWER_MAKEFIELD\SURVEYS\Control\LANGHORNE_TRAV.p1s

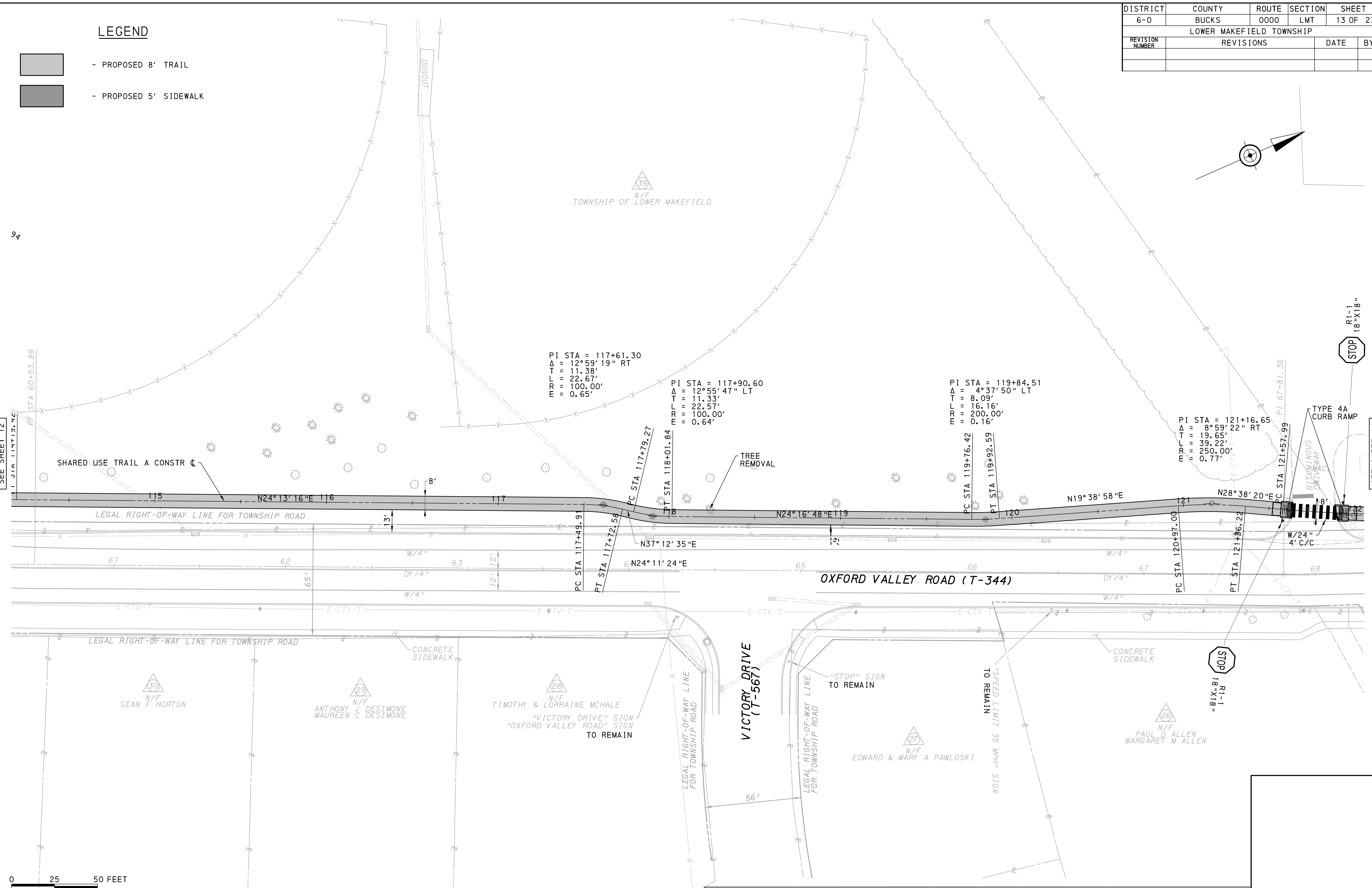
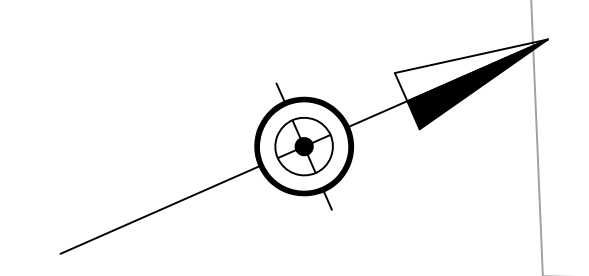
c:\pwork\pwork\proj\ect\work\mrcosen\0552958.p1\an01.dgn 3/16/2021 11:30U mrcosen

SEE SHEET 13

DISTRICT	COUNTY	ROUTE	SECTION	SHEET
6-0	BUCKS	0000	LMT	13 OF 23
LOWER MAKEFIELD TOWNSHIP				
REVISION NUMBER	REVISIONS	DATE	BY	

LEGEND

-  - PROPOSED 8' TRAIL
-  - PROPOSED 5' SIDEWALK



SEE SHEET 12

SEE SHEET 14

0 25 50 FEET



FOR PROFILE, SEE SHEET 19

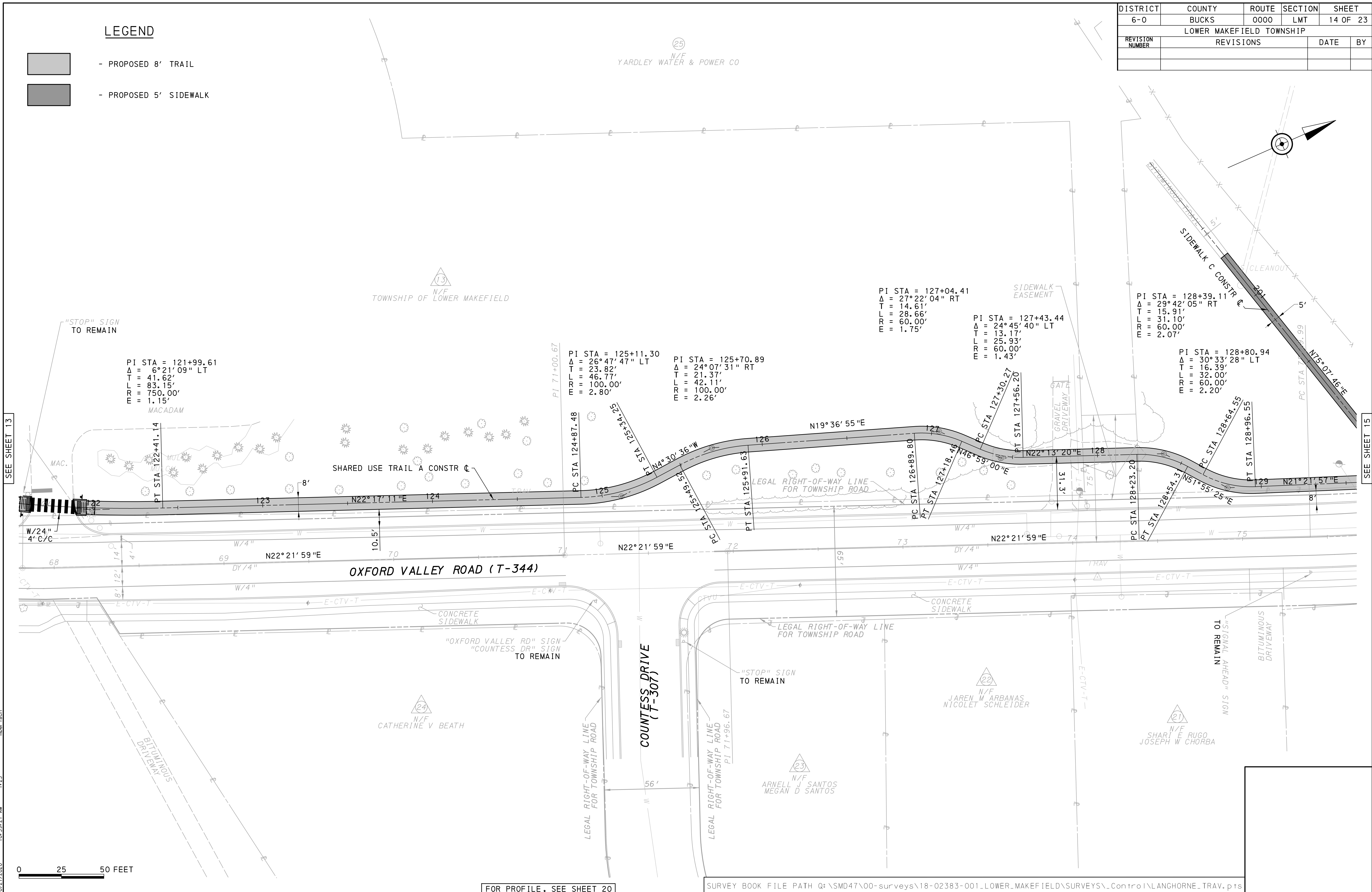
SURVEY BOOK FILE PATH Q:\SMD47\00-surveys\18-02383-001-LOWER_MAKEFIELD\SURVEYS\Control\LANGHORNE_TRAV.p.ts

c:\pwork\img\proj\ectw\se\neer\sch\d0592958\p_lan02.dgn
10/21/2020 10:58:50 AM mber:tsch

DISTRICT	COUNTY	ROUTE	SECTION	SHEET
6-0	BUCKS	0000	LMT	14 OF 23
LOWER MAKEFIELD TOWNSHIP				
REVISION NUMBER	REVISIONS	DATE	BY	

LEGEND

-  - PROPOSED 8' TRAIL
-  - PROPOSED 5' SIDEWALK



SEE SHEET 13

SEE SHEET 15

c:\pwork\ing\proj\ectw\se\neer\sch\d0592958\p_lan03.dgn
10/21/2020 10:59:27 AM rber:tsch 1:25



0 25 50 FEET

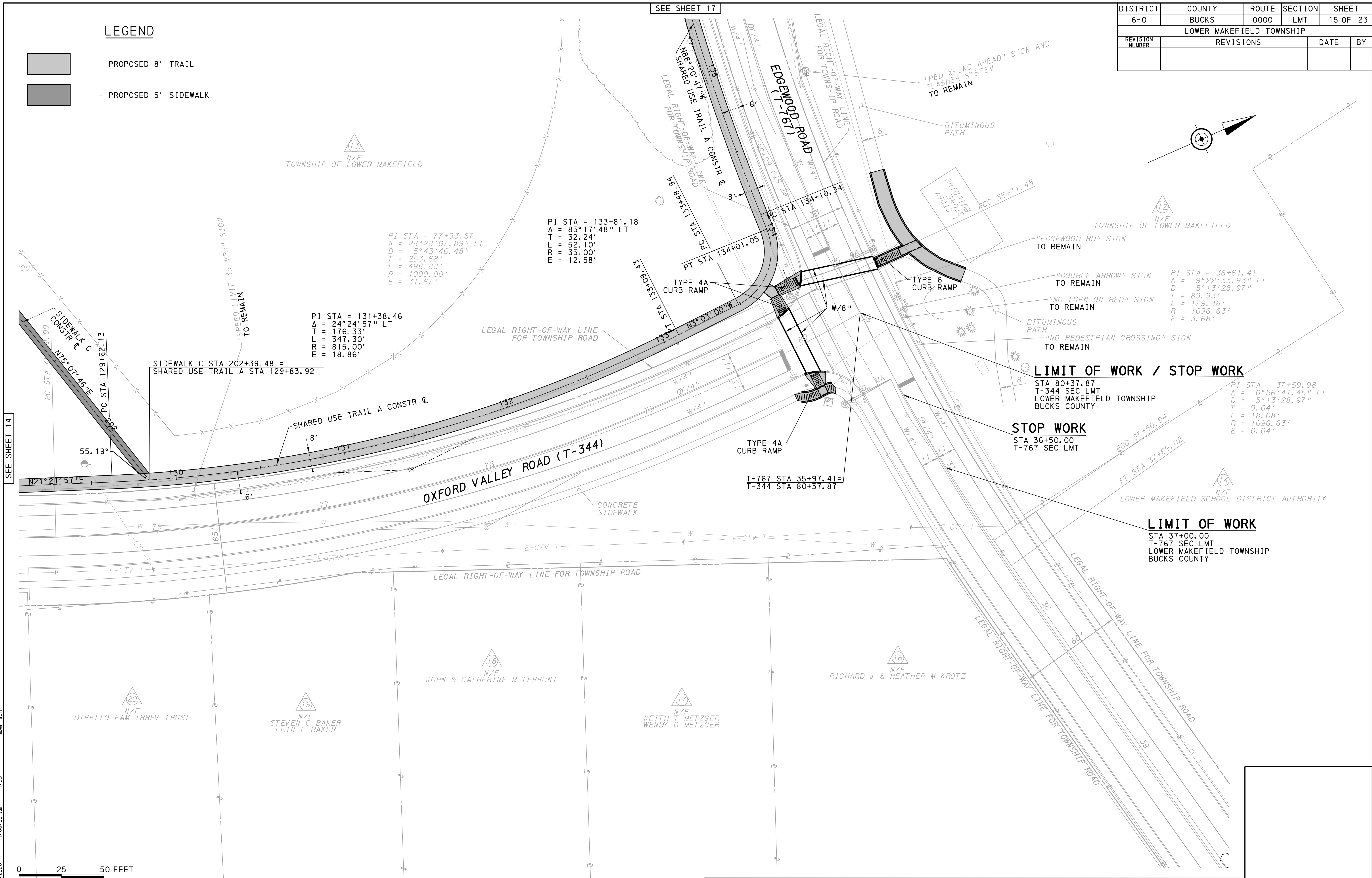
FOR PROFILE, SEE SHEET 20

SURVEY BOOK FILE PATH Q:\SMD47\00-surveys\18-02383-001-LOWER_MAKEFIELD\SURVEYS\Control\LANGHORNE_TRAV.p1s

DISTRICT	COUNTY	ROUTE	SECTION	SHEET
6-0	BUCKS	0000	LMT	15 OF 23
LOWER MAKEFIELD TOWNSHIP				
REVISION NUMBER	REVISIONS	DATE	BY	

LEGEND

-  - PROPOSED 8' TRAIL
-  - PROPOSED 5' SIDEWALK



SEE SHEET 14

SEE SHEET 17

c:\pwork\ing\proj\ectw\se\mber\sch\d0592958\p_lan04.dgn
10/21/2020 11:00:03 AM 1:25 mber:tsch



0 25 50 FEET

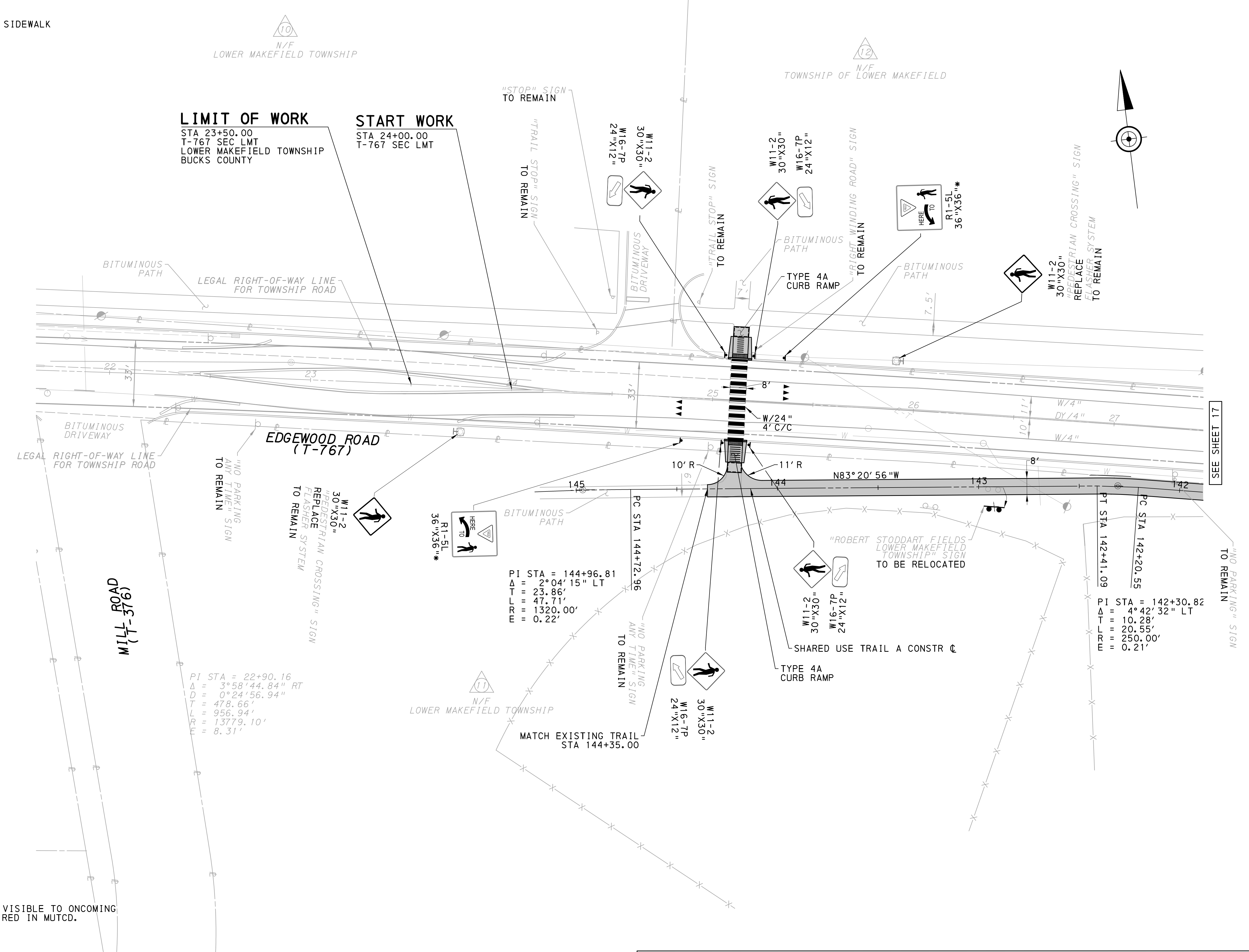
FOR PROFILE, SEE SHEET 21

SURVEY BOOK FILE PATH Q:\SMD47\00-surveys\18-02383-001-LOWER_MAKEFIELD\SURVEYS\Control\LANGHORNE_TRAV.pfs

DISTRICT	COUNTY	ROUTE	SECTION	SHEET
6-0	BUCKS	0000	LMT	16 OF 23
LOWER MAKEFIELD TOWNSHIP				
REVISION NUMBER	REVISIONS	DATE	BY	

LEGEND

-  - PROPOSED 8' TRAIL
-  - PROPOSED 5' SIDEWALK



c:\pwork\mg\proj\ect\work\mbr\tsch\d0592958\p_lan05.dgn
 mbr:tsch
 3/11/2021 11:25 AM



* INSTALL R1-5L SO W11-2 IS VISIBLE TO ONCOMING TRAFFIC FOR DISTANCE REQUIRED IN MUTCD.

FOR PROFILE, SEE SHEET 22

SURVEY BOOK FILE PATH Q:\SMD47\00-surveys\18-02383-001-LOWER_MAKEFIELD\SURVEYS\Control\LANGHORNE_TRAV.p1s

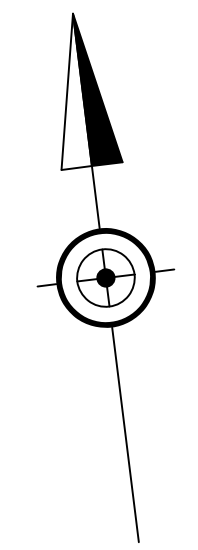
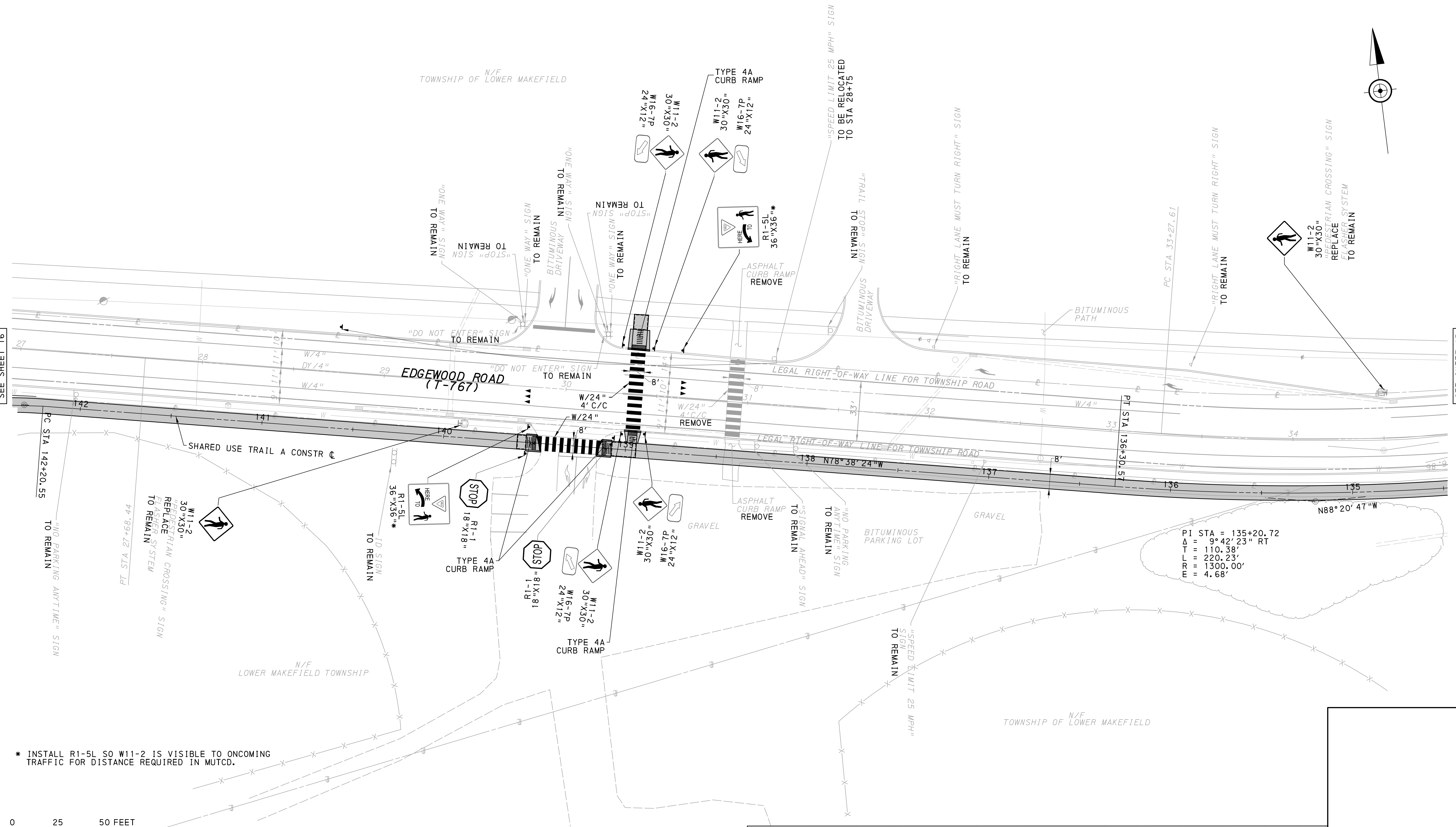
DISTRICT	COUNTY	ROUTE	SECTION	SHEET
6-0	BUCKS	0000	LMT	17 OF 23
LOWER MAKEFIELD TOWNSHIP				
REVISION NUMBER	REVISIONS	DATE	BY	

LEGEND

-  - PROPOSED 8' TRAIL
-  - PROPOSED 5' SIDEWALK

SEE SHEET 16

SEE SHEET 15



PI STA = 135+20.72
 Δ = 9° 42' 23" RT
 T = 110.38'
 L = 220.23'
 R = 1300.00'
 E = 4.68'

* INSTALL R1-5L SO W11-2 IS VISIBLE TO ONCOMING TRAFFIC FOR DISTANCE REQUIRED IN MUTCD.

0 25 50 FEET

FOR PROFILE, SEE SHEET 23

SURVEY BOOK FILE PATH Q:\SMD47\00-surveys\18-02383-001-LOWER_MAKEFIELD\SURVEYS\Control\LANGHORNE_TRAV.plt

c:\pwork\ing\proj\ect\wise\mber\sch\d0592958\p_lan06.dgn
 mber:tsch
 11:25
 3/11/2021

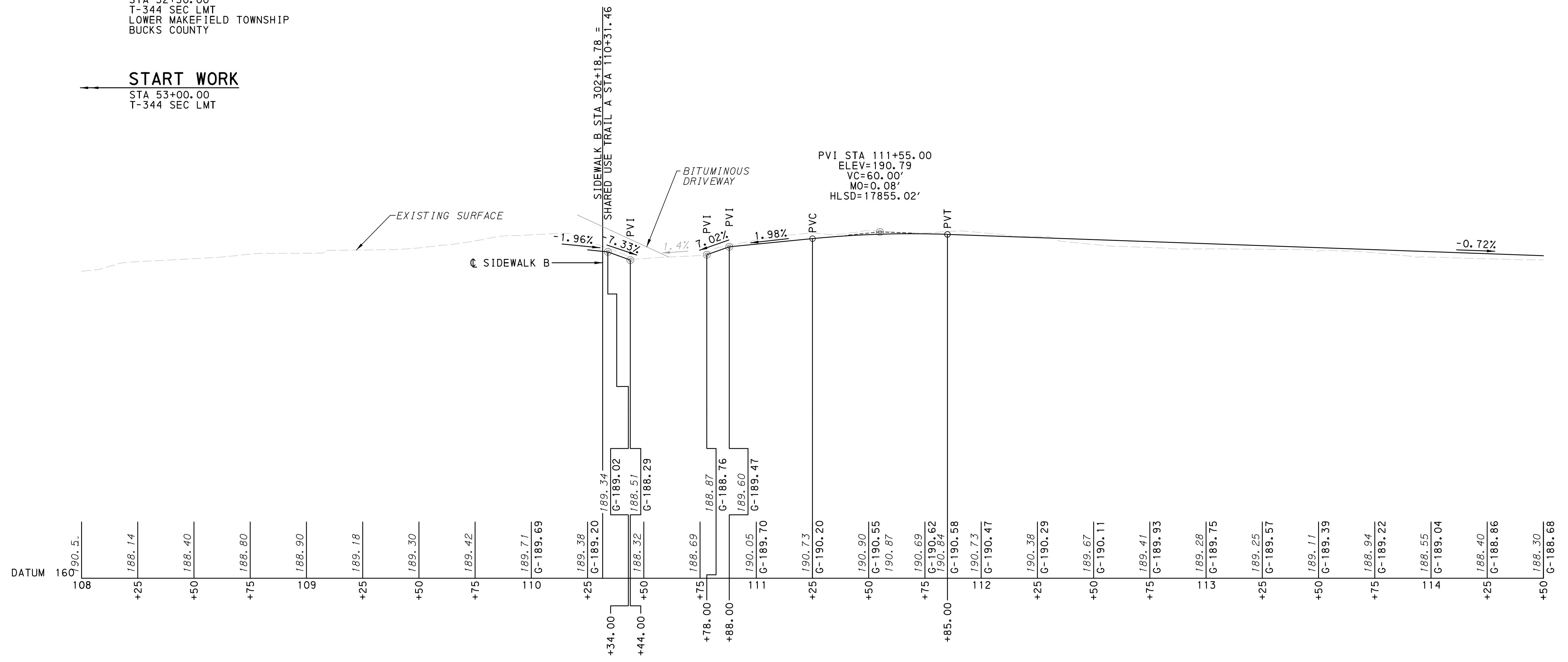
DISTRICT	COUNTY	ROUTE	SECTION	SHEET
6-0	BUCKS	0000	LMT	18 OF 23
LOWER MAKEFIELD TOWNSHIP				
REVISION NUMBER	REVISIONS	DATE	BY	

LIMIT OF WORK

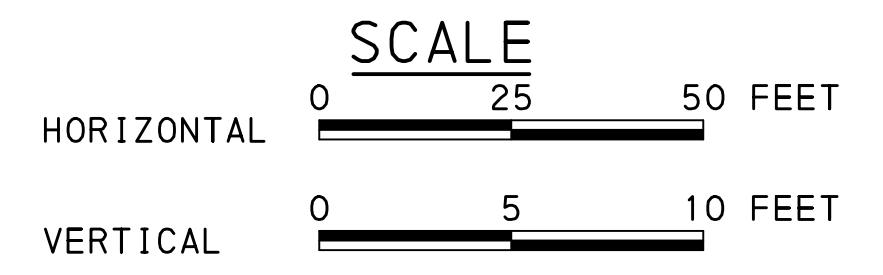
STA 52+50.00
T-344 SEC LMT
LOWER MAKEFIELD TOWNSHIP
BUCKS COUNTY

START WORK

STA 53+00.00
T-344 SEC LMT



SHARED USE TRAIL A
(ALONG T-344)

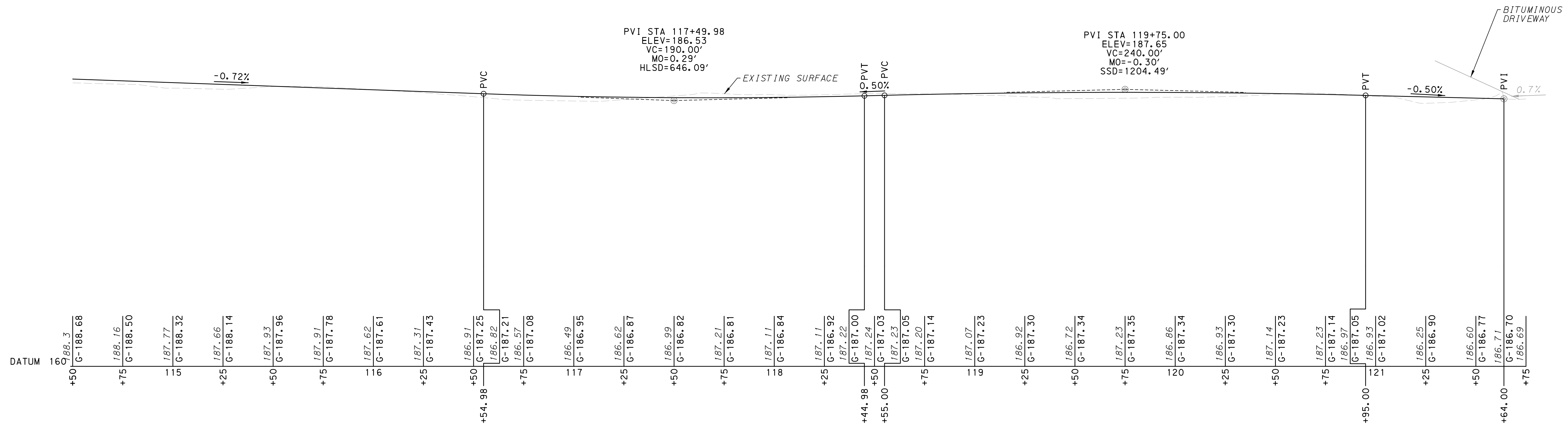


FOR CONSTRUCTION PLAN, SEE SHEET 12

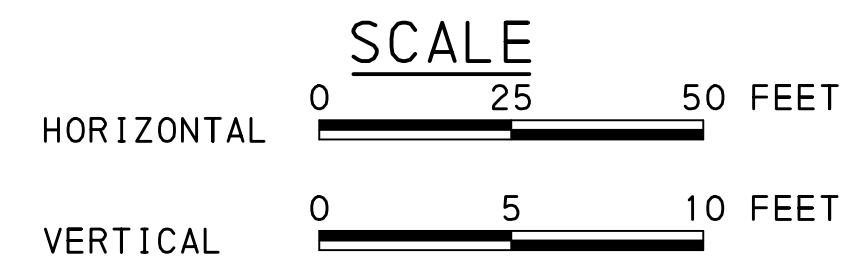
SEE SHEET 19

c:\pwworking\project\ise\mber\tsch\d0592958\p\profile01.dgn
 10/21/2020 11:01:34 AM 1:25 mber\tsch

DISTRICT	COUNTY	ROUTE	SECTION	SHEET
6-0	BUCKS	0000	LMT	19 OF 23
LOWER MAKEFIELD TOWNSHIP				
REVISION NUMBER	REVISIONS	DATE	BY	



SHARED USE TRAIL A
(ALONG T-344)



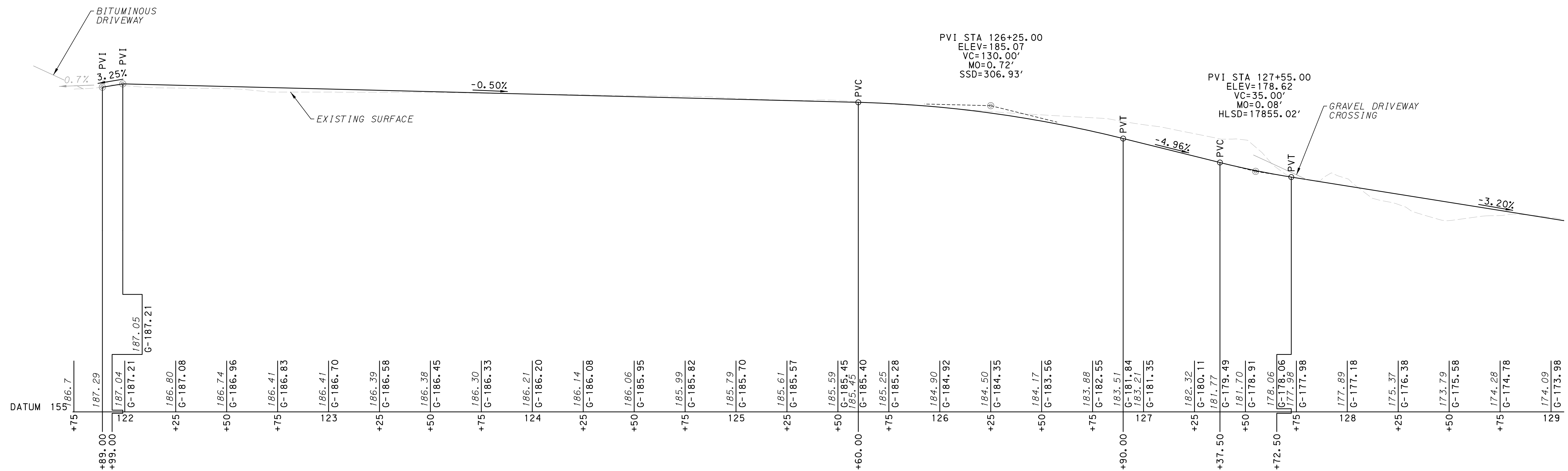
SEE SHEET 18

SEE SHEET 20

FOR CONSTRUCTION PLAN, SEE SHEET 13

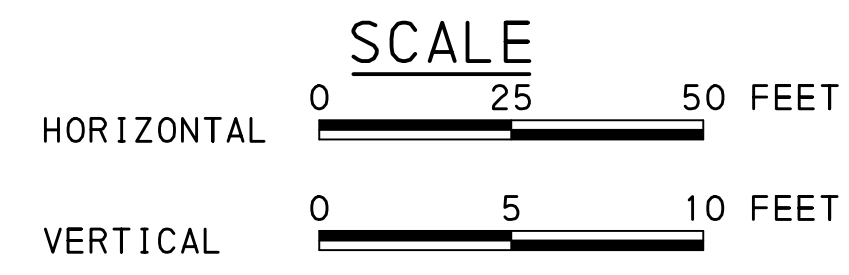
ct:\pwworking\proj\electr\se\neer\tsch\d0592958\p\profile02.dgn
10/21/2020 11:01:45 AM 1:25 rber:tsch

DISTRICT	COUNTY	ROUTE	SECTION	SHEET
6-0	BUCKS	0000	LMT	20 OF 23
LOWER MAKEFIELD TOWNSHIP				
REVISION NUMBER	REVISIONS			DATE BY



DATUM	15	186.7
+75		
+89.00	187.29	
+99.00	187.04	
	G-187.21	187.05
	G-187.21	G-187.21
+25	186.80	
	G-187.08	
+50	186.74	
	G-186.96	
+75	186.41	
	G-186.83	
123	186.41	
	G-186.70	
+25	186.39	
	G-186.58	
+50	186.38	
	G-186.45	
+75	186.30	
	G-186.33	
124	186.21	
	G-186.20	
+25	186.14	
	G-186.08	
+50	186.06	
	G-185.95	
+75	185.99	
	G-185.82	
125	185.79	
	G-185.70	
+25	185.61	
	G-185.57	
+50	185.59	
	G-185.45	
+60.00	G-185.40	
+75	185.25	
	G-185.28	
126	184.90	
	G-184.92	
+25	184.50	
	G-184.35	
+50	184.17	
	G-183.56	
+75	183.88	
	G-182.55	
+90.00	183.51	
	G-181.84	
	G-181.35	
+25	182.32	
	G-180.11	
+37.50	181.77	
	G-179.49	
+50	181.70	
	G-178.91	
+72.50	178.06	
	G-178.06	
	G-177.98	
128	177.89	
	G-177.18	
+25	175.37	
	G-176.38	
+50	173.79	
	G-175.58	
+75	174.28	
	G-174.78	
129	174.09	
	G-173.98	

SHARED USE TRAIL A
(ALONG T-344)



FOR CONSTRUCTION PLAN, SEE SHEET 14

ct:\pwork\ing\proj\elect\ise\neer\tsch\d0592958\p\profile03.dgn
10/21/2020 11:02:01 AM 1:25 mber:tsch

SEE SHEET 19

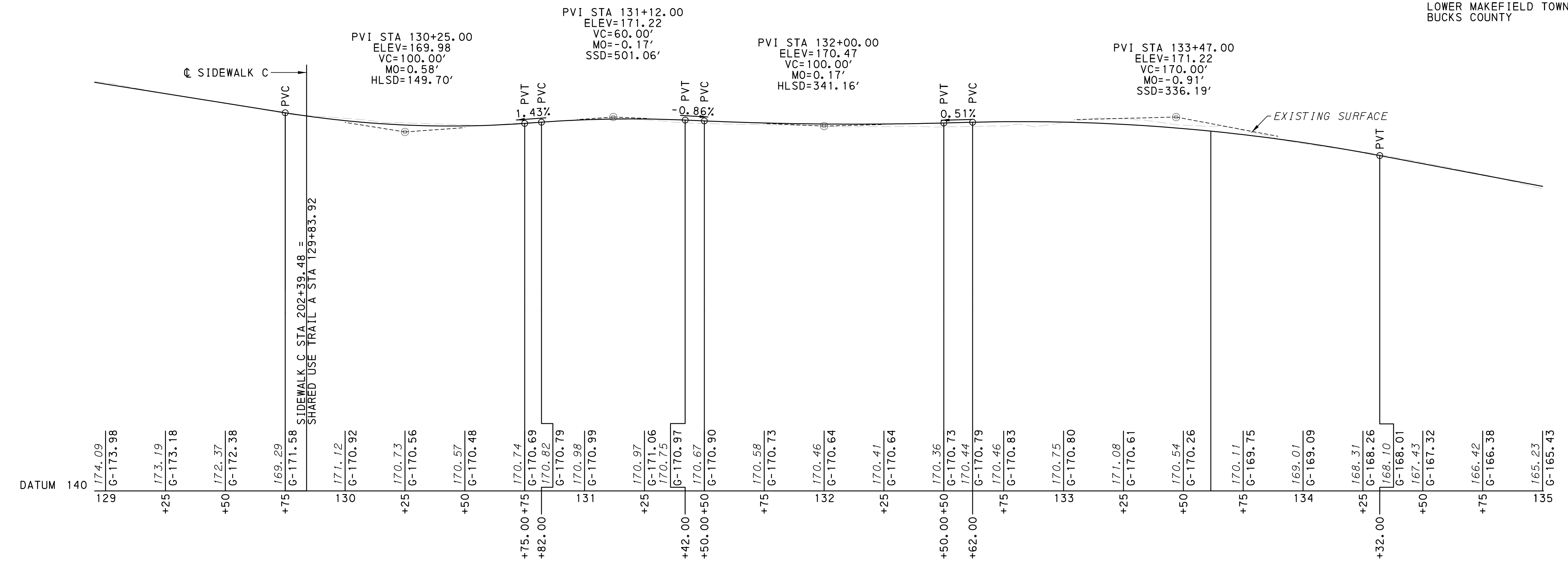
SEE SHEET 21

DISTRICT	COUNTY	ROUTE	SECTION	SHEET
6-0	BUCKS	0000	LMT	21 OF 23
LOWER MAKEFIELD TOWNSHIP				
REVISION NUMBER	REVISIONS	DATE	BY	

LIMIT OF WORK
 STA 37+00.00
 T-767 SEC LMT
 LOWER MAKEFIELD TOWNSHIP
 BUCKS COUNTY

STOP WORK
 STA 36+50.00
 T-767 SEC LMT

LIMIT OF WORK / STOP WORK
 STA 80+37.87
 T-344 SEC LMT
 LOWER MAKEFIELD TOWNSHIP
 BUCKS COUNTY



SHARED USE TRAIL A
 (T-344 AND T-767 INTERSECTION)



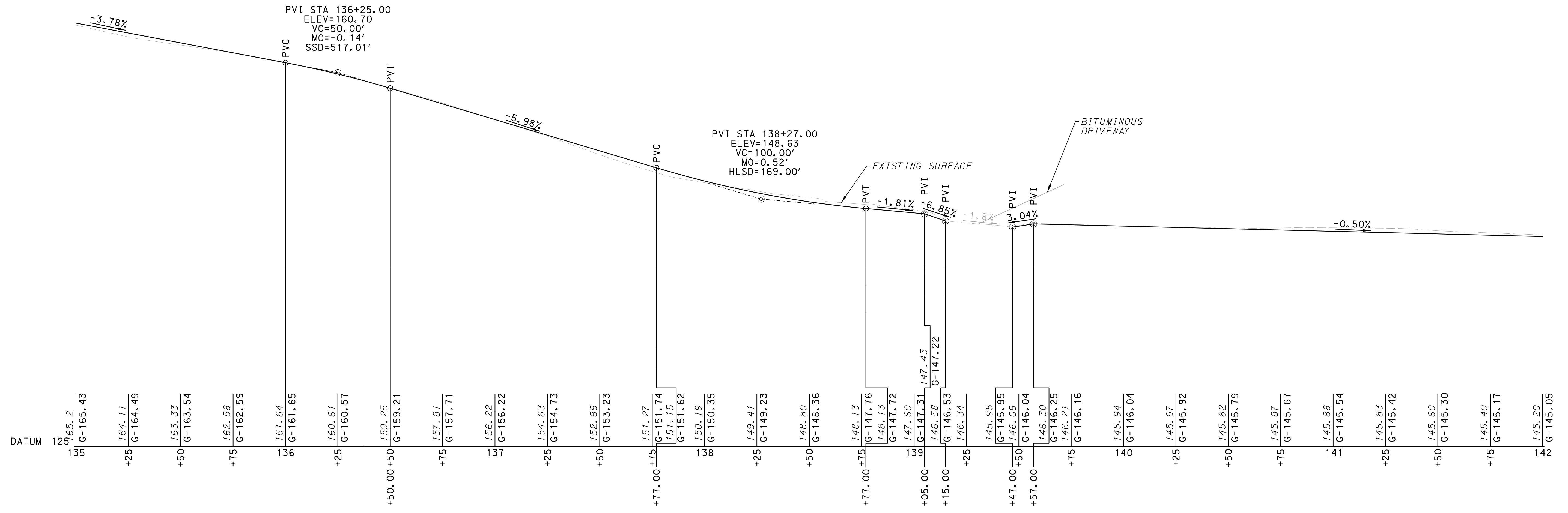
FOR CONSTRUCTION PLAN, SEE SHEET 15

SEE SHEET 20

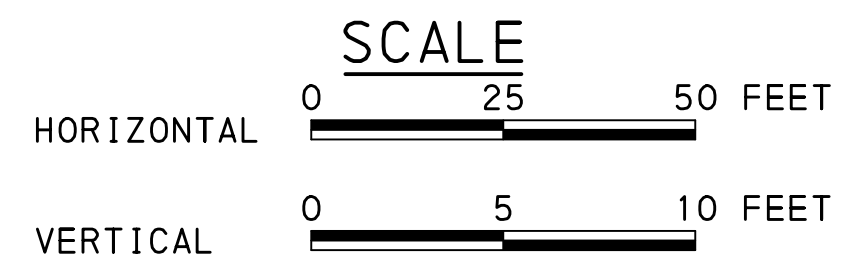
SEE SHEET 22

ct:\pwork\ing\proj\ect\work\se\neer\tsch\d0592958\p\prof\le04.dgn
 10/21/2020 11:02:18 AM 1:25 mber:tsch

DISTRICT	COUNTY	ROUTE	SECTION	SHEET
6-0	BUCKS	0000	LMT	22 OF 23
LOWER MAKEFIELD TOWNSHIP				
REVISION NUMBER	REVISIONS	DATE	BY	



SHARED USE TRAIL A
(ALONG T-767)



FOR CONSTRUCTION PLAN, SEE SHEET 17

SEE SHEET 21

SEE SHEET 23

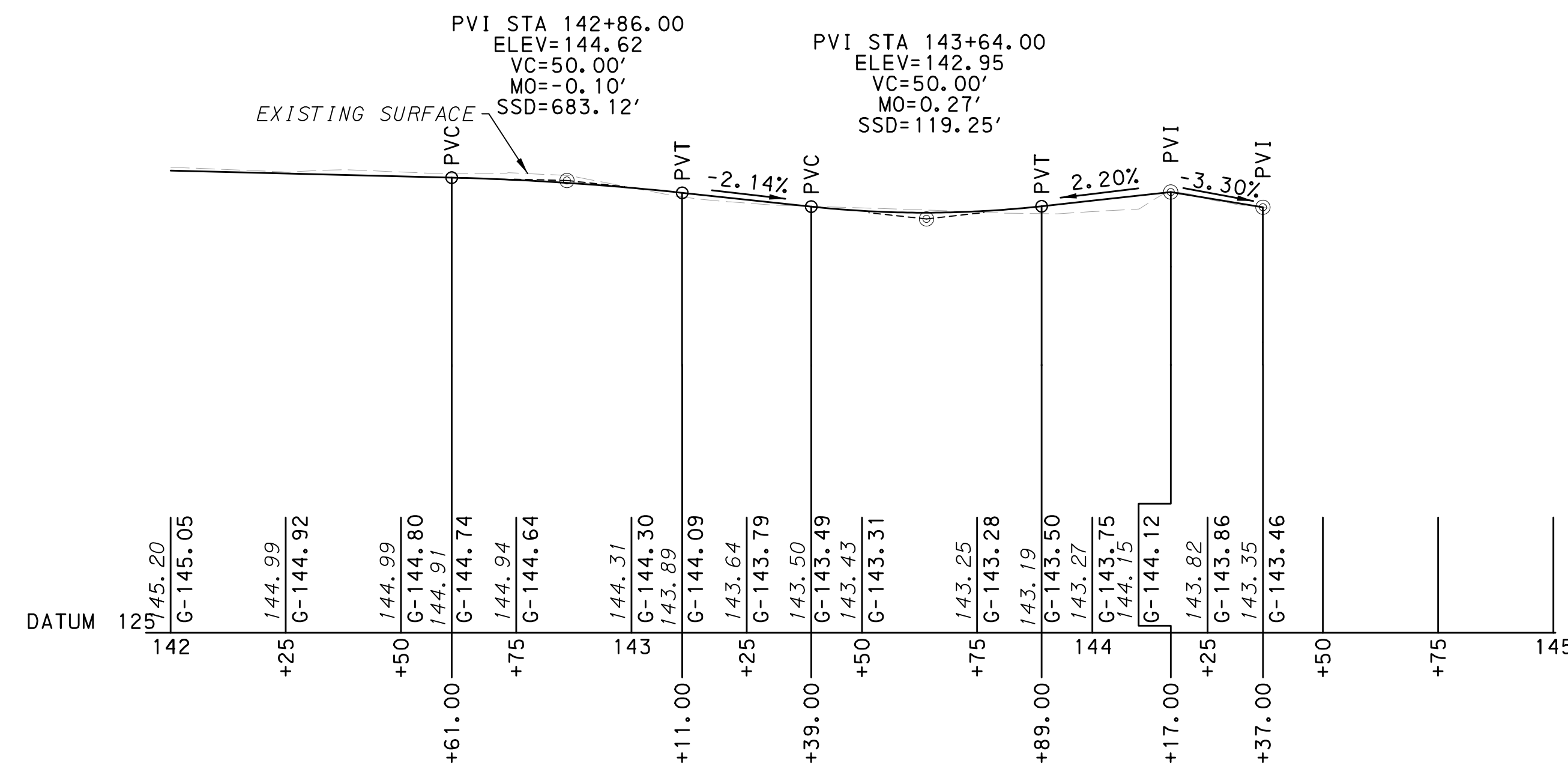
DISTRICT	COUNTY	ROUTE	SECTION	SHEET
6-0	BUCKS	0000	LMT	23 OF 23
LOWER MAKEFIELD TOWNSHIP				
REVISION NUMBER	REVISIONS	DATE	BY	

LIMIT OF WORK

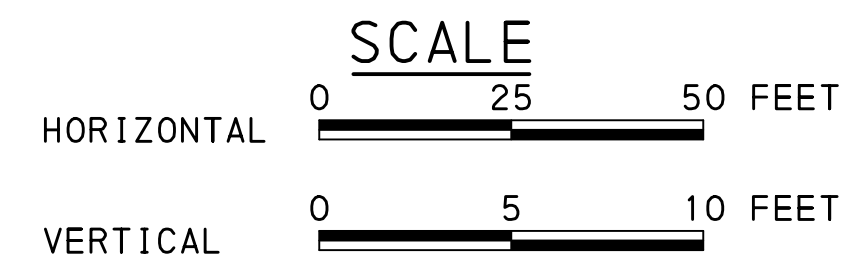
STA 23+50.00
T-344 SEC LMT
LOWER MAKEFIELD TOWNSHIP
BUCKS COUNTY

START WORK

STA 24+00.00
T-344 SEC LMT



**SHARED USE TRAIL A
(ALONG T-767)**



SEE SHEET 22