

SPRING 2024



# LOWER MAKEFIELD TOWNSHIP



Photo by BWags Photography

## LOOK INSIDE

Township Directory.....	3	Youth Committee .....	9
Thank You Brian Wagner.....	3	Information.....	12
2024 Board of Supervisors Meeting Schedule.....	4	Public Open House for Macclesfield Park Master Plan.....	12
Township Holiday Schedule for 2024.....	4	Adult Fitness & Wellness .....	13
Police Department.....	4	Youth Fitness and Wellness .....	14
Fire Services .....	5	Adult Art Classes.....	15
Public Works.....	6	Now Is The Time To Prepare For Summer 2024 .....	15
Community Development.....	6,8	The Pool.....	16,17
Parks and Recreation.....	8-17	Lower Makefield Township Seniors.....	17
Veteran's Day Toiletry Drive .....	8	Recreational Opportunities .....	18
Sponsors Needed for 2024 Events.....	8	Makefield Highlands.....	20,21
Flower Show.....	8		

**TOWNSHIP OFFICE: 1100 Edgewood Rd, Yardley, PA 19067**

**Phone: 267.274.1100 | Visit us at [www.lmt.org](http://www.lmt.org)**



**MOHAWK**  
SmartStrand  
FOREVER CLEAN™

- Extraordinarily clean
- Exceptionally durable
- Environmentally friendly



**NOW FEATURING**  
THE ONLY CARPET PROTECTION AND WARRANTY COVERING  
ALL PETS. ALL ACCIDENTS. ALL THE TIME.

**Carpet - Hardwood - Laminate - Vinyl - Stair Runners**  
**Tile - Stone - Backsplashes - Bathrooms - Area Rugs**

**HOLLAND**  
FLOOR COVERING

RESIDENTIAL • COMMERCIAL

[www.HOLLANDFLOOR.com](http://www.HOLLANDFLOOR.com)

**35 SWAMP ROAD**  
**NEWTOWN PA**  
**215-357-0909**

**VISIT OUR NEW SHOWROOM!**  
124 E. LANCASTER AVE.  
WAYNE, PA  
610-947-6500

**{ OUR PRICES WILL FLOOR YOU }** **{ FREE NO OBLIGATION ESTIMATES }**

BRING THIS AD FOR  
**{ \$100 OFF }**  
Any purchase of \$1,500 or more  
Retail only. Coupon must be presented  
at time of purchase. Cannot be combined  
with any other discounts. Exp. 7/31/24



*The Area's Only Family Owned and Operated Specialty Pet Store*  
*Serving the Northampton Community for Over 20 Years*

**We have the Best Toys, Treats and Apparel, Homeopathic Supplements and the Largest Selection of Natural, Raw and Alternative Diets**

[www.dogsandcatsrule.pet](http://www.dogsandcatsrule.pet)

*Visit one of our seven convenient locations*

**Village of Newtown (next to McCaffreys)**  
**Hopewell Crossing Shopping Center • Maple Glen Shopping Center**  
**The Shops at Windsor Green • The Shoppes at Veterans Lane Doylestown**  
**Logan Square New Hope • Center Square Plaza Bluebell**

**REMINGTON & VERNICK ENGINEERS**

— Building Better Communities Since 1901 —

Lower Makefield Corporate Center, North Campus  
1010 Stony Hill Road, Suite 175  
Yardley, PA 19067

267-394-4500  
[rve.com](http://rve.com)

# ARE YOU READY FOR A NEW HOME?

Call your local MORTGAGE experts to get started



**Federated Lending**  
Corporation  
1669 Edgewood Road  
Yardley, PA 19067



Visit [www.fedlend.com](http://www.fedlend.com)

Call us: 215-493-1500



Licensed by the PA, NJ & FLA Department of Banking and Securities - NMLS # 112272



# TOWNSHIP DIRECTORY

1100 Edgewood Road, Yardley, PA 19067  
Phone: 267-274-1100 • Website: [www.lmt.org](http://www.lmt.org)

## BOARD OF SUPERVISORS



**John B. Lewis**, Chair  
267-274-1143  
Email: [jlewis@lmt.org](mailto:jlewis@lmt.org)



**Daniel R. Grenier**, Vice Chair  
267-274-1191  
Email: [dgrenier@lmt.org](mailto:dgrenier@lmt.org)



**Suzanne S. Blundi**, Secretary  
267-274-1145  
Email: [sblundi@lmt.org](mailto:sblundi@lmt.org) Matt



**Ross**, Treasurer  
267-274-1146  
Email: [mross@lmt.org](mailto:mross@lmt.org)



**James McCartney**, Supervisor  
267-274-1147  
Email: [jmccartney@lmt.org](mailto:jmccartney@lmt.org)

## TOWNSHIP DEPARTMENTS

Lower Makefield Township is dedicated to the well-being of our residents. To focus on the health of the public and our employees, we encourage residents to call or email the Township before coming to our buildings. Your questions can be answered on the phone and much of our permitting and registration can be done electronically. Citizens can submit any requests, questions, observations or concerns on issues directly related to Lower Makefield Township through the Online Permitting & Citizen Requests portal. <https://townshiplowermakefieldpa.viewpointcloud.com/>

### POLICE

- Questions and concerns, of a non-emergency nature, can be addressed by calling (215) 493-4055 between 8:30 A.M. – 4:30 P.M. We can also give insights on email and other digital means of obtaining information as opposed to coming into the offices.
- For all non-emergency issues, that require a police officer, please call non-emergency dispatch at (215) 493-4011.
- For all emergencies please dial 911.

### PARKS AND RECREATION

- Park related permits, pavilion rentals, discount tickets, and class registration questions can be addressed by calling 267-274-1110.
- Registrations can be completed at <https://register.communitypass.net/LowerMakefield>.
- Dog Park questions can be addressed by calling 267-274-1105 or by emailing [dogpark@lmt.org](mailto:dogpark@lmt.org).
- Pool related questions can be addressed by calling 267-274-1105 or by emailing [communitypool@lmt.org](mailto:communitypool@lmt.org).
- Pickleball related questions can be addressed by calling 267-789-0806 or by emailing Bonnie Gannon at [bonnieg@lmt.org](mailto:bonnieg@lmt.org)

### PUBLIC WORKS

- If you have a concern or question, please call the main Public Works number at 267-274-1130 or by emailing [susanr@lmt.org](mailto:susanr@lmt.org) with cc to [derekr@lmt.org](mailto:derekr@lmt.org).
- Right of Way/Road Occupancy permits must be submitted in the Online Permitting & Citizen Requests portal: <https://townshiplowermakefieldpa.viewpointcloud.com/>

### CODES AND ZONING

- Building & other Township Permit applications must be submitted in the Online Permitting & Citizen Requests portal: <https://townshiplowermakefieldpa.viewpointcloud.com/>
- Questions regarding anything related to Building Permits can be made via phone call to 267-274-1126.
- Questions regarding Zoning and Planning issues can be made via phone call to 267-274-1123 or via email at [jimm@lmt.org](mailto:jimm@lmt.org).
- Questions and submissions regarding Sewer Lateral Inspections can be made via email to [sewerlateral@lmt.org](mailto:sewerlateral@lmt.org). Submission of paper forms, USB drives and/or the \$100 permit fee checks can be made through our "after hours drop box" conveniently located to the right of the main entrance doors of the Municipal Building.

# THANK YOU

Lower Makefield Township would like to thank **Brian Wagner of BWags Photography**, who has greatly supported the Township by providing free photography for Township events. In the last issue of the Township Newsletter, we used two of his photos, and they went unrecognized. See below. Thank you for everything you do. Page 15 of the 2023 Winter Newsletter

### LMT RACE SERIES

Lower Makefield Township is excited to announce our 2023 LMT Race Series dates. Lower Makefield hosts a series of races throughout the year for a variety of different foundations. Each run was a huge success last year and we hope for it to grow even larger this year. There are plenty of opportunities to get involved in our race series from being a participant, sponsor, and volunteer. For more information regarding one of the races or how to get involved please call (267) 274- 1111.



**Race the Course 5K/10K – November 3, 2023 at Makefield Highlands Golf Club**

Page 19 of the 2023 Winter Newsletter



Join us for our Folds of Honor Tournament and our 3rd Annual Lower Makefield Township "Race the Course 5K & 10K" This event is open to all individuals and supports the Folds of Honor Foundation in their continued goal to provide scholarships to spouses and children of America's fallen and disabled service members. Also featuring PGA HOPE!



## MAXIMUM HOME COMFORT ALL SEASON, EVERY SEASON

*Fueling Your Home Comfort with Top Quality Products & Services*



**HARRIS**  
"Comfort Year Round"  
215-968-7477  
[www.HarrisComfort.com](http://www.HarrisComfort.com)  
Follow us: @harriscomfort  
PA LIC: 22 • NJ: 13VH06306900

# 2024 BOARD OF SUPERVISORS MEETING SCHEDULE

## Wednesdays @ 7:30PM

February 7, 21	May 1, 15	August 7, 21	November 6, 20
March 6, 20	June 5, 19	September 4, 18	December 4, 18
April 3, 17	July 3, 17	October 16	

## TOWNSHIP HOLIDAY SCHEDULE FOR 2024

New Year's Day Holiday	Monday, January 1
Martin Luther King Jr. Day	Monday, January 15
Presidents Day	Monday, February 19
Good Friday	Friday, March 29
Memorial Day	Monday, May 27
Independence Day	Thursday, July 4
Labor Day	Monday, September 2
Columbus Day/Indigenous People's Day Observed	Monday, October 14
Veterans Day	Monday, November 11
Thanksgiving Day	Thursday, November 28
Day after Thanksgiving	Friday, November 29
Christmas Eve Holiday (Half Day)	Tuesday, December 24
Christmas Day	Wednesday, December 25
New Year's Eve (Half Day)	Wednesday, December 31

## POLICE DEPARTMENT

### The Lower Makefield Township Police Explorer Unit



Founded in 1971 and affiliated with the Washington Crossing Council of The Boy Scouts of America, the Lower Makefield Explorers Program provides teens and young adults the same time serving our community. Our Police Explorers (Cadets) often serve as the eyes and ears for police,

directing traffic at township functions, parades, sporting events & festivals. The Explorers meet with police twice monthly to receive training on

topics like the subjects. Cadets who successfully complete one year in the Lower Makefield Police Explorers program are eligible to receive six college credits toward an Associate's degree from Bucks County Community College at no cost to the student.

Chief Kenneth Coluzzi urges anyone interested in this program to please contact the Explorer coordinator, Sergeant Tim Reeves at [TIMR@LMT.ORG](mailto:TIMR@LMT.ORG).

For further information, please download a brochure on the Lower Makefield Police Crime Watch website at [bucks.crimewatchpa.com/lowermakefieldtwpd](http://bucks.crimewatchpa.com/lowermakefieldtwpd).

Bucks County Runs On Us!

KENDERDINE'S

Heating Oil Delivery  
Equipment Sales & Service

Family Owned  
& Operated

Amana

Heating & Air Conditioning  
AMERICA'S BRAND  
FOR COMFORT

- HVAC Installations
- A/C & Heat Pump Systems
- Boilers & Furnaces, Oil & Gas
- Service Contracts for  
A/C, Heat Pumps,  
Furnaces, Boilers

215-968-2041 • [www.kenderdines.com](http://www.kenderdines.com)

500 S State Street • Newtown PA

PA-HIC NO. 021878

Your Neighborhood Auto Repair Shop

Online  
Appointment  
Booking

Big Oak Citgo

Since 1994

Servicing  
All Makes  
& Models

Customer service is our #1 priority and we have the track record to prove it. Join your neighbors who have been coming to us for generations and you will see why our personal touch makes the difference!

215.295.4535

www.BigOakCitgo.com

Located at the corner of Big Oak & Makefield Roads

## FIRE SERVICES

As the community continues to grow, so do the calls for service for the volunteer fire company. In 2023, the Yardley-Makefield Fire Company responded to just under 600 emergency calls for service, varying from house fires, vehicle fires, hazardous conditions, and many other emergencies. Community growth is great, but it also affects the emergency responders that protect the town. The fire company did see an increase in membership over the past year, but the average age of the firefighters on the apparatus responding during the day is still almost 57 years old!! At nighttime, the average age of the firefighters on the apparatus decreases a little to 53 years old; some younger members are home from work. These numbers are concerning due to the stress that all emergency responders are under when they respond, which could cause several health issues, such as strokes and heart attacks. The fire company is always looking for residents in the community who might be interested in joining to reach out via our website ([www.yardleymakefieldfire.com](http://www.yardleymakefieldfire.com)). Whatever skill set you have, there is a place for you in the company!

Melted snow, budding trees, longer days: they're all signs that the warmer months are fast approaching, and for many of us, these seasonal hallmarks are reminders to start spring cleaning in and around our homes.

As people power up their lawnmowers, rake up debris, touch up chipped paint, and take on projects to get their homes and yards ready for the months ahead, the following are six key practices and supporting recommendations to help minimize the risk of fires and associated hazards:

### Properly use and store gasoline

- Use gasoline only as motor fuel, never as a cleaner or to break down grease.
- Only store gasoline in a container that is sold for that purpose and never bring it indoors, even in small amounts.
- Never store gasoline containers in a basement or in the occupied space of a building. Keep them in a detached garage or an outdoor shed.
- Make sure the container is tightly capped when not in use.

### Carefully dispose of rags with paint and stain

The oils commonly used in oil-based paints and stains release heat as they dry. If the heat is not released in the air as the rags dry, the heat is trapped, builds up and can cause a fire.

- Never leave cleaning rags in a pile. When you're finished using the rags, take them outside to dry, keeping them well away from the home and other structures.
- Hang rags outside or spread them on the ground and weigh them down so that they don't blow away.
- Put dried rags in a metal container, making sure the container is tightly covered. Fill the container with water/detergent solution, which will break down the oils.
- Keep containers of oily rags in a cool place out of direct sunlight and away from other heat sources.

### Use/store flammable and combustible liquids with care

- Flammable and combustible liquids should not be used near an open flame.
- Never smoke when working with these liquids.
- If you spill liquids on your clothing, remove your clothing and place it outside to dry. Once dry, clothing can be laundered.
- Keep liquids in their original containers. Keep them tightly capped or sealed. Never store the liquids in glass containers.

### Inspect grills to ensure they're in good working order

- Inspect your grill carefully and make sure it's free of grease or fat buildup. Clean out any nests, spider webs, or other debris you may find.
- For propane grills, check the gas tank hose for leaks before using it for the first time each year.

### Keep debris well away from your home

Every year, wildfires burn across the U.S., with more and more people living in communities where wildfires are a real risk.

- Dispose of branches, weeds, leaves, pine needles, and grass clippings that you have cut to reduce fuel for fire.
- Remove leaves, pine needles, and other flammable material from the roof, gutters, and on and under the deck to help prevent embers from igniting your home.
- Remove dead vegetation and other flammable materials, especially within the first 5 feet of the home.
- Move construction material, trash, and woodpiles at least 30 feet away from the home and other outbuildings.

### Clean out your clothes dryer

- Make sure your dryer's air exhaust vent pipe is not restricted and that the outdoor vent flap will open when the dryer is operating. This includes making sure the outdoor vent flap is not covered by snow.
- Move things that can burn, such as boxes, cleaning supplies and clothing, away from the dryer.
- Clothes that have encountered flammable substances like gasoline, paint thinner, or similar solvents should be laid outside to dry, then can be washed and dried as usual.

For more information go to the National Fire Protection Association (NFPA) website at [www.nfpa.org](http://www.nfpa.org).

Any fire related questions or concerns (non-emergency) please don't hesitate to reach out to the Fire Service Director at [firesafety@lmt.org](mailto:firesafety@lmt.org) or 267-274-1127.



**EDELMAN**  
WEALTH MANAGEMENT GROUP



A NEW YEAR, A FRESH START!  
Let's put a financial plan  
in place for 2024.

- Investment Management
- Retirement & Educational Planning
- Life, Health, LTC, & Disability Insurance
- Employee Benefits & Qualified Retirement Plans

Scott Edelman, BFA<sup>™</sup>  
President, EWMG



Edelman Wealth Management Group, Inc.  
1790 Yardley Langhorne Road, Suite #202, Yardley, PA 19067

#unparalleledservice #uncomplicatedadvice



Securities and investment advisory services offered through **Osaic Wealth**, Inc. member FINRA/SIPC. **Osaic Wealth** is separately owned and other entities and/or marketing names, products or services referenced here are independent of **Osaic Wealth**.

Call Us today 215-579-5601. [EdelmanWealthManagement.com](http://EdelmanWealthManagement.com)

## PUBLIC WORKS

### 2023 Public Works Department Review

The Township's Public Works Department maintains of 138 road miles, 345 lane miles of road, 40 culverts and bridges of various sizes, 372,000 LF or 70 miles of drainpipes of different sizes and compositions, 5,500 street signs, 270 streetlights, 90 basins equaling 180 acres, 60 mowed open space plus wooded parcels totaling over 500 acres and facilities maintained including the Administration Building (including Police Department, Finance and Tax Office), Public Works Garage and multiple storage garages throughout the Township Complex.

In 2023 the department processed -14,000 cubic yards of leaves, repaved and repaired over 3.5 miles of roadway, and repaired and replaced 0.5 miles of bike path.

#### Yard Waste Information:

**Acceptable yard waste:** wood, grass clippings, tree limbs, and leaves. Please cut limbs down to 6' lengths. Please call ahead if you plan on bringing in large-diameter logs (over 36").

**Not acceptable yard waste:** pressure-treated lumber, root balls, wood coated in creosote, bamboo, ornamental grasses, anything with dirt, appliances, tires, concrete, asphalt, stone, furniture, electronics, wood with spikes, nails, or other hardware. No bagged material is permitted in the yard.

**Any loads with unacceptable materials will not be permitted to enter the yard.**

#### What to expect during the Yard Waste Drop-off Day

The Lower Makefield Township yard waste drop-off site will be open several days throughout the year for LMT residents to use. A contractor working on behalf of a LMT resident can also visit the site.

- We will have an employee looking in the beds/backs of vehicles to ensure only yard waste is coming into the yard. They will also record license plate numbers so we can keep track of number of users and repeat visitors. You will also need to show your ID with your address to verify place of residence.
- The number of vehicles permitted down in the yard is limited at one time in order to manage "traffic" in the yard.
- We will have employees in the yard to direct traffic where the vehicles are to drop off yard waste.
- We will have another employee operating the front loader to push the pile as it gets larger. This will help ensure an orderly process of where vehicles are unloaded.

**Any vehicles with unpermitted items will not be allowed into the yard to dump.**

For more information about Lower Makefield Township's department overviews or leaf collection, please visit [www.lmt.org](http://www.lmt.org) or call 215-493-2064.

#### Leaf Mulch Pickup

The Recycle Yard will be opened for leaf mulch pickup only, on Fridays between Noon to 2 PM starting Mid- April 2024. This is for the pickup of leaf mulch only. **YARD WASTE IS NOT ACCEPTED AT THIS TIME.** Pickup can also occur on scheduled recycle yard days.

**2024 RECYCLE YARD DAYS**  
Drop off hours from 7 A.M. - 3 P.M.

**SATURDAYS:** APRIL 6th, 27th, MAY 18th,  
SEPTEMBER 21st, OCTOBER 19th

**MONDAYS:** JUNE 10th, JULY 15th, AUGUST 14th

## COMMUNITY DEVELOPMENT



Lower Makefield received the bronze-level certification from the Sustainable PA program run by the Pennsylvania Municipal League and Sustainable Pittsburgh. The program provides strategies, resources, and recognition to municipalities for improving the quality of life and expanding opportunities for everyone.

The township is committed to saving taxpayer dollars, using resources efficiently, and applying best practices in municipal government and community development. This assessment will improve our day-to-day operations in administration, community development, finance, and public works to support a sustainable future and help guide the decisions of the Board of Supervisors.



#### Stormwater Solutions

One method of managing backyard drainage problems and increased stormwater runoff from new impervious surfaces is an infiltration trench. An infiltration trench is a gravel-filled trench that receives stormwater runoff, allowing it to infiltrate into the ground. During small storm events, infiltration trenches can significantly reduce runoff volume since water is stored between the stones & can soak into the ground. Use our calculation spreadsheet to help with your project: Impervious Surface / Stormwater Management Calculation. Please stop by our offices if you have questions or need any assistance.

#### What Are They Building Now?

You can find out the latest status on development proposals by visiting the Planning Commission webpage at: <https://www.lmt.org/government/boards-and-commissions/planning-commission/> Periodic updates are provided on projects under consideration, projects recently approved, and projects recently completed.



#### Online Permitting & Citizen Requests

Citizens can submit any requests, questions, observations or concerns on issues directly related to community development in Lower Makefield Township through the online portal. <https://townshiplowermakefieldpa.viewpointcloud.com/>



# LIFE SIMPLIFIED



## **Over 10 specialties under one roof.**

We know the best care starts at home. From primary care and cardiology to radiology, orthopaedics and beyond, Penn Medicine Bucks County brings specialty care closer to you. So wherever you are in your health care journey, you won't have to go far. We're just around the corner.

Discover more at [PennMedicine.org/BucksCounty](http://PennMedicine.org/BucksCounty) or call 215.860.0775

Penn Medicine Bucks County  
777 Township Line Road, Yardley, PA 19067



# Penn Medicine

## COMMUNITY DEVELOPMENT

### Historical Architectural Review Board (HARB)



HARB reviews plans for the erection, reconstruction, alteration, restoration, demolition or razing of all or a part of any building within the Edgewood Village Historic District.

HARB is composed of 7 members appointed by the Board of Supervisors: 1 registered architect; 1 licensed real estate broker (does **not** need to be a Township resident); 1 LMT Building Inspector; plus 4 additional persons with a knowledge of & interest in the preservation of the historic buildings. <https://www.lmt.org/government/boards-commissions/historical-architectural-review-board/>

The Board of Supervisors is accepting resumes for volunteer positions on this and many other Boards and Commissions. Please send a letter of interest with a current resume to [admin@lmt.org](mailto:admin@lmt.org).

### Flood Recovery Project



Lower Makefield Township staff set up a Flood Recovery Project page on the Township Zensity Engage platform to help our community bounce back faster from unexpected flooding events. Gather with fellow residents to explore, learn about, and discuss innovative strategies and solutions for recovering from such incidents.

The proposed Flood Recovery Project promises not just to address immediate flood impacts, but also to foster developmental strategies that mitigate future flood emergencies. Acknowledging our commitment to community-driven policymaking, your input and views are valuable in driving this initiative forward. Please scan QR code on left.



You can also get more Flood Information and learn more about Flood Insurance at: <https://www.lmt.org/departments/community-development/flood-information-insurance/> Please scan QR code on right.

## PARKS AND RECREATION



### Veteran's Day Toiletry Drive

– Lower Makefield Township Parks and Recreation along with Pennsbury Education Association partnered for our 2023 Toiletry Collection to help our many veterans serviced by the Veteran's Multi-Service Center, Philadelphia, PA. This

year's collection received 60 items that were purchased through our Amazon wish list for \$1,000.00. We want to thank the Lower Makefield Township residents, Pennsbury Education Association members and the Veteran's Multi-Service Center for their support and donations to our veterans.

**Sponsors Needed for 2024 Events** – Lower Makefield Township Parks and Recreation offers many different annual events for the Community that allow potential businesses to connect with our community. Our Township events attract thousands of individuals and families yearly at no or minimal cost to the residents. Your sponsorship makes this possible. The sponsorship package levels enable businesses of every type to identify sponsorships that align with their values and mission. Don't hesitate to contact [kathyh@lmt.org](mailto:kathyh@lmt.org) or 267-274-1105 for information about sponsoring events. Depending on your support level, there are opportunities to be publicized on our website, act as a cohost on social media, have signage up on event day, and be mentioned on our media releases. We will work with you to develop the best package that fits your needs. We need to raise up to \$60,000 for our event series! Thank you for your support. For more information, please visit Sponsorship | Lower Makefield Township ([lmt.org](http://lmt.org))

**Flower Show** – 2024 Philadelphia Flower Show ADVANCED Ticket Orders – Available in the Lower Makefield Township Membership Office, 267-274-1105 or email [kathyh@lmt.org](mailto:kathyh@lmt.org). Please check our website for pricing <https://www.lmt.org/departments/parks-recreation/programs-membership/discount-tickets>







# PARKS AND RECREATION



## VISION: PLAY FOR ALL

**MISSION:** The Parks and Recreation Department is committed to providing top-notch parks and recreation facilities and services for all residents through three key themes:

**HEALTH:** Improve physical health, mental health and overall quality of life by offering safe and accessible facilities and open space.

**ENVIRONMENT:** Act as environmental stewards through responsible use of the natural environment and protect and maintain Parks and Recreation assets.

**COMMUNITY:** Create opportunities for the community to connect through a wide variety of partnerships, programs, events and classes.

The Lower Makefield Township Parks and Recreation Department is located at the Community Center and is open to the public, Monday-Friday from 8:00am-4:30pm for field or pavilion rental requests, and to sign up for programs like the ones you will find within this guide.

**You can also register ONLINE!** for The Pool, the Dog Park, Field and Pavilion permit requests, as well as classes and programs. These opportunities can be found at:

**REGISTER.COMMUNITYPASS.NET/LOWERMAKEFIELD**

2024 Lower Makefield Township Dog Park Orientations Community Center, 1550 Oxford Valley Rd, Yardley, Pa 19067  
7:00 PM (If you already have an account for The Pool, Dog Park, or from a previous class, please sign in using the same account!)  
**For questions or feedback, please call 267-274-1110 or email [prinfo@lmt.org](mailto:prinfo@lmt.org).**

## YOUTH COMMITTEE

The LMT Youth Committee is made up of 9th to 12th graders who are looking to get involved in the Lower Makefield Township Community. The Youth Committee volunteers in numerous service opportunities throughout the year to help make the Township a better place for all. For more information, please visit LMT Youth Committee | Lower Makefield Township or email [cadams@lmt.org](mailto:cadams@lmt.org).

*Mission Statement: Organize leadership, community service, and recreational opportunities for and by the youth in our community and make recommendations to the Parks and Recreation Board.*

Family Owned & Operated Since 1948



**COOL-AID CO.**

**AIR CONDITIONING & HEATING**

Residential & Commercial Heating & Air Conditioning Services  
Quality Repairs & Installation

**A/C Check Up \$39<sup>95</sup>**

**FREE ESTIMATES ON INSTALLATIONS**

**215-698-1600**  
**www.CoolAidCo.com**

Fully Licensed & Insured • Lic# PA042039

Serving Philadelphia, Bucks & Montgomery Counties

**Need a new Roof?**



**Hail or wind damage**

WE ARE YOUR LOCAL ROOFING EXPERTS  
**ALERTING YOU ABOUT ALL THE STORM DAMAGE IN YOUR AREA**

[info@visionroofingexteriors.com](mailto:info@visionroofingexteriors.com)  
[www.VisionRoofingExteriors.com](http://www.VisionRoofingExteriors.com)

**FREE INSPECTION**

**215-900-4767**

GAF Certified VELUX BBB A+ rating

*Beauty & Security that Last a Lifetime!*



**104 Years** of Experience & 4 Generations of Jammer Quality & Commitment

**VISIT OUR SHOWROOMS**

**Lawrenceville, NJ**  
2850 Brunswick Pike  
(Business Rt. 1)  
**609-883-0900**

**Yardley, PA**  
10 N Main Street  
(At The Gristmill)  
**215-493-7709**

Mon-Fri: 8am - 4pm  
Saturday 8am - 12noon

By Appointment Only

**Toll Free 1-800-448-1920**

NJ HIC# - 13VH02000800

PA HIC# - 022787

[www.jammerdoors.com](http://www.jammerdoors.com)

**Garage Doors • Operators • Gate Openers • Entry Doors • Patio Doors • Storm Doors • Windows**



**Weichert**  
REALTORS®

**Jack McCarthy**  
REALTOR®

**O: 215-493-0900 C: 215-510-6853**

j.mccarthy@weichert.com  
www.jackmccarthyrealtor.com  
65 South Main St., Yardley, PA 19067

**BUILD EXCELLENCE**



Full Service General Contracting & Construction Management

📞 215.510.6853

✉ j.mccarthyjr@capstoneconstructiongccc.com

🌐 capstoneconstructiongccc.com

# Fresh Start.

Come visit our Licensed Dietitian Nutritionist to help start healthy habits and routines.

Schedule an appointment with the registered dietitian today at the ShopRite of Yardley.

**Jenie Mussallem**

Phone: 215-595-0078 ext. 3001  
Jenie.Mussallem@wakefern.com



**ShopRite of Yardley**  
1603 Big Oak Rd., Yardley • (215) 595-0078



**WELL EVERY DAY**

# Support Your Local Repair Shops!



Visit a trusted Confidence Plus Certified Service Center to enjoy these exclusive benefits with your next vehicle service:

- Complimentary Roadside Assistance
- Work performed by ASE-certified technicians
- Nationwide Warranty for 2 years or 24,000 miles
- Comfortable customer waiting areas

Support your local repair shop while enjoying the terrific benefits of the Confidence Plus Certified Service Center program.

**“Service is the Difference” at these local Confidence Plus Service Centers.**

## BIG OAK CITGO

215-295-4535 812 Big Oak Rd.,  
www.bigoakcitgo.com Yardley, PA 19067

## JOHN'S SERVICE CENTER

215-295-3550 415 W Trenton Ave.,  
www.autorepairmorrisville.com Morrisville, PA 19067



215-736-1150  
240 Woolston Dr.,  
Morrisville, PA 19067



215-295-7172  
www.dp-autorepair.com  
1520 S Pennsylvania Ave., Morrisville, PA 19067



215-295-5111  
www.rpmtireauto.com  
500 S Pennsylvania Ave., Morrisville, PA 19067



215-295-8848  
www.makefieldauto.net  
87 Makefield Rd., Morrisville, PA 19067

**SITKO'S** 215-493-3633  
AUTOMOTIVE REPAIR www.sitkosautoservice.com  
40 E. Afton Ave., Yardley, PA 19067

**JULES TIRE** 215-295-7141  
and 5365 W. Bridge St.,  
**AUTO SERVICE, INC** Morrisville, PA 19067  
anorestorations@gmail.com



**YARDLEY SERVICE CENTER**  
215-493-2037

194 S Main St., Yardley, PA 19067  
www.yardleyservicecenter.com

**PERFECT VIEW**  
Premium Beam Blades by  
**BOSCH**

**confidenceplus**  
Certified Service Centers  
**COUPON!**

Receive a **FREE** pair of Perfect View Wipers Blades when you have a Service Check performed by one of the Certified Service Centers listed above!

\*Coupon expires 4/30/24

Sponsored by

**AUTOPARTS**  
warehouse

50 Warehouse locations in PA and NJ!

SERVICE IS THE DIFFERENCE. **We Get It!**

## INFORMATION

### LMT DOG PARK

**Registration Information: <https://register.communitypass.net/LowerMakefield>**

**Residents:** \$45 / for one (1) dog; \$15 for each additional dog, per year  
**Non-Residents:** \$60 / for one (1) dog; \$15 for each additional dog, per year  
 Register online for a free upcoming dog park orientation class. After the class is complete, residents can register and pay online, and bring shot records, PA dog license receipts, and the certificate from completing the class to the LMT Community Center (1550 Oxford Valley Road) or email to [dogpark@lmt.org](mailto:dogpark@lmt.org)

January 31	May 29	September 25
February 28	June 26	October 30
March 27	July 31	November 27
April 24	August 28	December 18



Orientation is held at the Community Center 1550 Oxford Valley Rd. Oxford Valley Rd. Yardley PA 19067 (located next to the Fred Allan Softball Fields).

### Park Pavilion Permit Requests

There are two pavilions available for private parties and events. Kid's Kingdom at Community Park has a covered pavilion with capacity for 30 people. Memorial Park has a covered pavilion next to the Secret Garden Playground with capacity for 20 people. Both pavilions have bathroom, playground, grilling, and picnic table access.

Pavilions Memorial Park and Pavilions		
Security Desposit	\$50	
Resident	\$50	3 Hours (min)
Resident Each additional hour	\$20	HR
Non Resident	\$100	3 Hours (Min)
Non- Resident Each additional hour	\$40	HR

### Park Bench Donation Program

Please note: Benches may take an extended time for delivery due to supply chain issues. This program is designed to update and improve the benches in our parks, fields, etc., while allowing community members to dedicate something lasting in memory of a loved one or a community group to sponsor and support the Township. Reimbursement for bench, labor, and supplies \$2100, per bench. Please visit [LMT.org/government/departments/parks-recreation](http://LMT.org/government/departments/parks-recreation) to purchase or for more information.

### Lower Makefield Township Announces Public Open House for Macclesfield Park Master Plan

Lower Makefield Township is pleased to announce the first Public Open House for the Macclesfield Park Master Plan on February 21, 2024, from 6:30 to 8:30 p.m. in the Community Center. The Community Center is located at 1550 Oxford Valley Rd. Yardley PA 19067 next to the Fred Allan Fields. The meeting comes after months of preliminary work; the timeline can be viewed at [Lower Makefield Township, PA: Macclesfield Park Master Plan \(civilspace.io\)](http://Lower Makefield Township, PA: Macclesfield Park Master Plan (civilspace.io))

The Macclesfield Park Master Plan was initiated to study traffic, overuse, pedestrian safety, and other areas that emerged and to develop a long-term plan to address these issues that meets the needs of our sports groups and the community at large. The Board of Supervisors selected Johnson, Mirmiran & Thompson, Inc. (JMT) for this project.

JMT is equipped with highly trained and specialized professionals to study site capacity, proper parking and circulation for optimal use, ball field revitalization, and support facilities, including pavilions, other recreation amenities, restrooms, and lighting.

At the open house, there will be a small presentation followed by four areas where the public can interact with the material and provide feedback. This is a significant opportunity for members of our community to provide their input on how best to use this space to ensure it meets everyone's needs.

For more information on all Parks and Recreation projects project please visit [Play For All Planning | Lower Makefield Township \(lmt.org\)](http://Play For All Planning | Lower Makefield Township (lmt.org)).

**BUCKS COUNTY ELDER LAW**  
 Henry A. Carpenter II, Esq.  
 Certified Elder Law Attorney

**AREAS OF PRACTICE**

- Life Care Planning
- Asset Protection Planning
- Special Needs Planning/Trusts
- Medicaid Planning
- Guardianship
- Estate Administration
- Estate Planning
  - Last Will & Testament
  - Powers of Attorney
  - Living Will/Advance Health Care Directive

Licensed in Pennsylvania and New Jersey

**CALL OUR OFFICE TO SCHEDULE YOUR COMPLEMENTARY, NO OBLIGATION, INITIAL CONSULTATION.**

**Henry A. Carpenter II, Esq.**  
 Certified Elder Law Attorney (CELA)  
 Master of Laws in Taxation (LL.M)  
 2020 recipient "Excellent in Elder Law" Award  
 Chairman Emeritus, Elder Law Section of the Pennsylvania Bar Association

**215-493-0727 [www.buckscountyelderlaw.com](http://www.buckscountyelderlaw.com)**  
**301 Oxford Valley Rd Suite 101B, Yardley PA 19067**  
**Email: [henryc@haciilaw.com](mailto:henryc@haciilaw.com)**

**We Begin with an idea...**

Visit us  
for your  
**Custom Work**  
and  
**Repair Work**

**and bring imagination to life.**  
**All jewelry work done on the premises**

**YARDLEY JEWELERS**  
 GOLDSMITH • SILVERSMITH • PLATINUMSMITH  
 GEMOLOGIST • APPRAISER  
 2 South Main St Yardley, PA 19067  
 215-490-1300  
[www.yardleyjewelers.com](http://www.yardleyjewelers.com)

12 Lower Makefield Spring 2024

# Program Schedule

## ADULT FITNESS & WELLNESS



Register for classes: <https://register.communitypass.net/LowerMakefield>

### MONDAY

#### ZUMBA GOLD with Rachel 8-Week Series | 8:30 AM

Zumba Gold is perfect for anyone who is looking for a modified Zumba class that recreates the original moves you love at a lower intensity. While it is targeted for the older active adult, anyone can join in the fun! The design of the class introduces easy to follow Zumba choreography that focuses on balance, range of motion and coordination. Come ready to sweat and prepare to leave empowered and feeling strong. **Benefits** - Class focuses on all elements of fitness: cardiovascular, muscular conditioning, flexibility, and balance. Have a water bottle close by.

#### ALL LEVELS YOGA with Jeanine 6-Week Series | 6:30 PM

Bring balance and strength to the body and mind in this 1-hour yoga flow class. The class will consist of mindful movement through basic foundational poses with a focus on good alignment and connecting motion to breath.

Each class will end with a relaxing meditation in Savasana. This class is for all levels of students with modification given to make it accessible for all and provide challenge for the seasoned practitioner. Through the practice of yoga, the physical body can be strengthened, mobility increased, and balance improved, all with the side benefits of improved mental focus and stress reduction.

### TUESDAY

#### GENTLE YOGA EVENING CLASS with Linda 6-Week Series | 6:30 PM

Gentle yoga is great for beginners and students wanting to develop and maintain flexibility and strength. Poses (asanas) and breathing techniques (pranayama) are executed at a slow and mindful pace to support each individual's comfort level.

### WEDNESDAY

#### GENTLE YOGA with Linda 6-Week Series | 9:30 AM

Gentle yoga is great for beginners and students wanting to develop and maintain flexibility and strength. Poses (asanas) and breathing techniques (pranayama) are executed at a slow and mindful pace to support each individual's comfort level.

### THURSDAY

#### GENTLE MAT PILATES with Christine 6-Week Series | 10:00 AM

Joseph Pilates described physical fitness as the first prerequisite of happiness. Our bodies are meant to move, and Pilates is where core strengthening, postural alignment, the breath, and focused movement come together to awaken the body, ease tension, and recruit muscles that help you move with more grace and flow.

In addition to classical mat Pilates exercises, this class includes standing balance and body resistance exercises for participants at every level.

#### STRENGTH TRAINING with Sandy 8-Week Series | 6:30 PM

This is a non-cardio workout using light hand weights to work all of our major muscle groups. You will gain strength, coordination and burn calories. Let's feel better, stronger and have fun together! Bring hand weights, mat, towel and water bottle.

### FRIDAY

#### ZUMBA GOLD with Rachel 8-Week Series | 9:00 AM

Zumba Gold is perfect for anyone who is looking for a modified Zumba class that recreates the original moves you love at a lower intensity. While it is targeted for the older active adult, anyone can join in the fun! The design of the class introduces easy to follow Zumba choreography that focuses on balance, range of motion and coordination. Come ready to sweat and prepare to leave empowered and feeling strong.

**Benefits** - Class focuses on all elements of fitness: cardiovascular, muscular conditioning, flexibility and balance. Have a water bottle close by.

PA018147

**JMTawnings**  
215-659-5239  
www.jmtawnings.com

The Quality, Reliability  
& Experience You Expect

**perfecta**  
Retractable Fabric Awnings  
Manufactured Locally

RECOMMENDED  
SKIN  
CANCER  
FOUNDATION

**SOLD - DREW** The Market is Changing...  
Experience Matters

Specializing in Lower Makefield Township Real Estate since 1986

STILL A GREAT TIME TO SELL, CONTACT ME TODAY!

**RE/MAX TOTAL**  
Drew@HomesInBucksPa.com

**DREW FERRARA**  
215-369-HOME  
215-620-1107

# Program Schedule

## YOUTH FITNESS AND WELLNESS

### **SOCKEY HOCKEY**

**Grades 1st to 5th**

**Tuesdays or Thursdays | 5:30PM – 6:15PM**

Sockey is a safe variant of floor hockey played with neoprene sock-covered hockey sticks, soft indoor hockey balls, and players wear sneakers instead of skates. The indoor co-ed sport is created to learn the game of hockey, exercise, and have fun! Players receive a team shirt and hockey sticks are provided.



### **SUPER SOCCER STARS Program Outline**

Soccer Stars is the area's most popular youth educational soccer program! Backed by over 20 years of experience, we teach the FUNdamentals of soccer using positive reinforcement, imaginative themes, and engaging games. Players will learn skills, physical literacy, build self-confidence, and develop teamwork in every class. Certified coaches lead age-specific programs with low kid-to-coach ratios for children ages 1-5+

### **PARENT AND ME (1-2 YEAR OLDS)**

**8-Week Series | Saturdays | 8:30 AM – 9:10AM**

Parent & Me is a parent-child, pre-soccer and movement program specifically designed for toddlers between 12 and 24 months. Our experienced instructors along with our puppet friends, Mimi & Pepe, take you and your little one through a world of exciting physical activity, social awareness, and cognitive development. Coaches will provide individual attention, positive reinforcement, and will play engaging original music to develop skills that will have your toddler learning to balance, run, kick, and play – all while having a blast!

### **2-3 Year old Class**

**8-Week Series | Saturdays | 9:20 AM – 10:00 AM**

Soccer classes at this age are an exciting physical learning experience allowing your child to improve their natural ability in a fun and engaging way, with aspects of parent participation incorporated into the curriculum. Activities are presented using imagery relatable to children at this age to support learning about the body and ball awareness. The primary focus of each 40-minute class is to introduce physical activities, rich language exposure, and movements such as running, hopping, and jumping. Classes include fun dribbling and shooting activities to teach positive social interaction and the basic skills of soccer!

### **3-4-Year-Old Class**

**8-Week Series | Saturdays | 10:10 AM to 10:55AM**

The focal point of class for this age group is for your child to be comfortable with the ball by further developing soccer skills, such as dribbling, shooting, and the introduction of passing. 45-minute classes include partner activities to promote sharing, listening, respect, and cooperation. Physical activities include dynamic exercises like moving with pace, changing directions, and lateral agility.

### **4-5 Year Old Class**

**8-Week Series | Saturdays | 11:05 AM to 11:55AM**

The primary focus for this age group is body movement with the ball. Your child will be introduced to the concepts of teammates, teamwork, and spacing, along with fun skill-building games and activities. Each 50-minute class will include dynamic movements involving dribbling techniques with change-of-direction moves to promote confidence, footwork, and ball control. Imaginative themes are still utilized to keep children engaged and improving without feeling like they are just running drills.



**LIEBMANN**  
Family Law

4 Terry Drive, Suite 4 • Newtown, PA 18940

**Ph: 215-860-8200**

[www.liebmannfamilylaw.com](http://www.liebmannfamilylaw.com)



Jeffrey A. Liebmann, Mindy J. Snyder, David J. Sowerbutts

DIVORCE  
PRENUPTIAL  
AGREEMENTS  
CUSTODY & SUPPORT  
LGBTQ LAW  
ESTATES & PROBATE  
ADOPTION

DOMESTIC  
VIOLENCE  
ELDER LAW  
PATERNITY  
GRANDPARENTS'  
RIGHTS  
WILLS

Free initial consultation. Weekend and Evening Appointments Available.

## ADULT ART CLASSES

Register for classes: <https://register.communitypass.net/LowerMakefield>

### MONDAY

**WATERCOLOR ART CLASS with Chris**  
6-Week Series | 6:30 PM  
Resident: \$60.00 Per 6-week session  
Non-Resident: \$69.00 Per 6-week session

### THURSDAY

**WATERCOLOR ART CLASS with Chris**  
6-Week Series | 6:30 PM  
Resident: \$60.00 Per 6-week session  
Non-Resident: \$69.00 Per 6-week session

### FRIDAY

**WATERCOLOR ART CLASS with Chris**  
6-Week Series | 10:30 AM  
Resident: \$60.00 Per 6-week session  
Non-Resident: \$69.00 Per 6-week session

### Something for everybody!

**COME, RELAX, ENJOY AND DRAW/PAINT WITH A FUN GROUP OF ARTISTS!**

- You will learn many useful techniques and methods for producing watercolor paintings of your own.
- No previous experience is required. By the end of this course, you will be able to finish a watercolor painting with confidence.
- Learn the basics of pictorial composition, people, perspective and many other aspects of ART!
- Analyze painting strategies for executing original artworks and to prepare paintings for exhibition.
- You will be more informed about brush, paint and paper types and what is best for you.
- Learn to paint trees, skies, people, animals and much more!

### Now is the Time to prepare for Summer 2024

Lower Makefield Township Parks and Recreation Department prepares for the 2024 season through the winter months. If you are looking for a summer job and intending to participate in summer activities registration opens as early as January. Here are a few things to look out for as you prepare for the summer:

#### Summer Camp

Camp LMT offers a variety of activities and experiences that will keep children active, creative, and exploring new interests. With a 6:1 camper-counselor ratio, Camp LMT provides individual support to campers and enhanced supervision during all camp functions.

The summer camp will include 8 field trips throughout the summer. The campers will also have access to indoor and outdoor facilities such as the Community Center, The Pool at LMT, the Fred Allan Complex, the Caiola Complex, and the Kids Kingdom, which are all within walking distance.

Registration is now open for Camp LMT's summer program. For more information or to register your child, please visit [www.lmt.org](http://www.lmt.org) or 267-274-1110.

#### 2024 Summer Camp Fees

	RESIDENT	NON-RESIDENT
Eight-Week	\$1,600	\$1,750
Six-Week	\$1,250	\$1,400
Four-Week	\$900	\$1,000
Sibling Discount	5%	5%

#### 2024 Summer Camp Extended Care

Before care weekly	\$40
After care weekly	\$50

#### Tween Camp

LMT Tween Adventures Program is developed with the tween in mind. This is an opportunity to hang with friends, spend time by the pool, and go on many Trips to the beach, amusement parks, and much more. For more information, please visit Summer Fun/Camp | Lower Makefield Township ([lmt.org](http://lmt.org))

#### 2024 Tween Camp Fees

	RESIDENT	NON-RESIDENT
Eight-Week	\$1,670	\$1,830
Six-Week	\$1,310	\$1,440
Four-Week	\$910	\$1,000
Sibling Discount	5%	5%

#### Counselor in Training (C.I.T)

Counselors in training join our summer staff on a volunteer basis. During their time, they learned what it truly means to be a Camp LMT Camp Counselor.

- C.I.T must be 14 and 15 years of age
- Applications open on January 16th
- The deadline for applications is April 26th
- Application can be found [lmt.org](http://lmt.org)

#### Camp Employment

There are several opportunities to get involved in Lower Makefield Parks and Recreation as an employee. Being a Camp LMT Counselor can be more than just a job. Working as a camp counselor will teach you teamwork, problem solving skills, patience, and responsibility. Most importantly you will have a memorable summer.

- Camp counselors must be at least 16 years of age.
- Applications open on January 16th.
- The deadline for applications is April 12th.
- Application can be found on [lmt.org](http://lmt.org)

**THE POOL**

**POSITIONS INCLUDE:**

- Lifeguard
- Maintenance
- Gate Attendant

**JOIN OUR TEAM!**  
NOW HIRING FOR SUMMER OF 2024

New hires must apply by  
Monday, February 26th 2024  
For more information visit:  
<https://www.lmt.org>

LOWER MAKEFIELD TOWNSHIP  
Parks & Recreation



# REGISTRATION BEGINS MONDAY, JANUARY 29TH

## 2024 POOL MEMBERSHIP INFORMATION

	FULL PRICE		AUGUST ONLY DISCOUNT**	
	Resident	Non-Resident	Resident	Non-Resident
Under 1-5 (Discount)	\$75	\$110	\$45	\$80
Child 6-13/Senior 62+ (Discount)	\$100	\$140	\$60	\$95
Adult 14 and older (First two adults) Per person	\$210	\$275	\$170	\$230
Adult 14 and older (Each additional adult) Per person (Discount)	\$120	\$185	\$85	\$145
The first 1,000 full paying adults will receive a free guest pass!				
Military Discount	10%			

### Registration

Online Registration: <https://register.communitypass.net/LowerMakefield>

1. Register Online
2. Complete or Update Membership Requirements
3. Make Payment in Full

### Returning Members

- Login to your existing Community Pass account and register by clicking “Click Here to Get Started” and select “2024 Pool Membership”
- Continue through and click “Finish” when done.

**Do NOT create a new account**, for assistance with Login and Password call 267-274-1105.

Please Note: Returning members will be notified by email if their requirements need updating.

### New Members

- Create a new account and then register for the season by clicking “Click

Here to Get Started”, select “2024 Pool Membership”.

- Continue through and click “Finish” when done.
- Complete the membership requirements and make payment.

### Membership Requirements

- All members 18+ before 9/2/24: Driver’s License/State issued Photo ID – Provide a valid copy; signed legal disclaimer, and clear headshot photo.
- Members 14-17 before 9/2/24: Signed Legal Disclaimer by Parent/Guardian, Birth Certificate, and clear headshot photo.
- Children 1 – 13 before 5/25/24: Must be on an account with parent/guardian having a paid membership at their permanent address. Birth Certificate/Proof of Legal Guardianship (no passports); legal disclaimer; and clear headshot photo.

### Payment

Visa, MasterCard, and Discover can be used for payment when registering online.

TYPE	MEMBERSHIP DEFINITIONS
Child	If registering a child 13 or under, an adult over the age of 18 from the same household will also be required to have a membership
Adult	One person, age 14 and over. All adults must reside in the same household.
Senior	One person, age 62 (born on or before 9/4/61).
August Only	Valid from August 1 through Labor Day and are subject to the same conditions and privileges as full-season memberships but are not eligible for swim team.

## ADDITIONAL INFORMATION

To process your registration and activate your account, for same day entry, your information must be received in person at the Community Center by 11:00 AM.

**Refund Policy** – Requests must be received in writing and key fobs returned to the Community Center by Friday, May 24, 2024. Refunds will NOT be issued after this date.

**Change of Membership** – There is an administrative service charge of \$25.00 for switching membership categories. This is in addition to the fee required for the new category of membership.

**Returned Check Fee** – There is a \$15.00 return check charge.

**Lost Key Fob** – Replacement fee is \$10.00 per key fob. Please contact the Membership Office, 267-274-1105, immediately if key fob is lost so it can be deactivated.

### Key Fobs and Pictures

All pool members who are 1 year and older before May 25, 2024, are required

to obtain and use their Key Fobs to access The Pool Complex.

Individual photos are required and will be verified at the gate upon entry.

Email photos to [communitypool@lmt.org](mailto:communitypool@lmt.org), please send individual headshot photos and include name and Family ID # .

Please Note: Children whose pictures were taken in 2021 require new pictures this year.

All adults who became members between 2009 and 2014 are required to update their photo this year.

### Swim Team Members

All members must have a pool membership.

If you have any questions, please contact the Membership Office at [communitypool@lmt.org](mailto:communitypool@lmt.org) or call 267-274-1105. For more information visit [www.LMT.org](http://www.LMT.org).

*continued on nex page*



# PARKS AND RECREATION

## OTHER POOL FEE INFORMATION - FOR MEMBERS ONLY

GUEST PASSES		LESSONS		PAVILION RENTAL		
Guest Pass	\$20 per day	Swim Lessons	\$55, first child		Pavilion Rental Deposit	\$50
Guest Pass After 4:00PM	\$12	Swim Lessons	\$50, each additional child		Resident	\$50 3 Hr Min.
Senior Day Pass	\$10	Private Swim Lessons	\$30	0.5 HR	Resident Each Additional Hour	\$20 HR
Guest Passbook 10 Passes	\$180	Semi-Private Swim Lessons	\$20	Per Person (Up to 3)	Non Resident	\$100 3 Hr Min.
					Non Resident Each Additional Hour	\$40 HR

## LOWER MAKEFIELD TOWNSHIP SENIORS

The LMT Seniors membership organization provides opportunity that promote education, physical, cultural, emotional, and social wellbeing of people 55 years of age or older in a community based setting. New members are welcome both residents and non-residents 55+ are welcome to join. In addition, new members, the LMT Seniors are seeking members who want to support current activities or to implement potential new programming.

### LMT Senior Programming

- Art Classes: Friday at 10:00 AM – Noon (not in summer)
- Book Club: 2nd/3rd Wednesday 12:45 AM
- Bridge: Duplicate – Wednesday at 9:00 AM – Partner Required
- Bridge: Thursday at 9:00 AM
- Bridge: Open Seating – Tuesday at 12:00 PM
- Bridge: Duplicate – Friday at 11:30 AM – Partner Required
- Cards: Canasta / Hand & Foot – Wednesday 9:00 AM
- Games Day (Wednesday mornings)
- Line Dancing: Saturday at 10:00 AM
- Mah Jongg: Monday 12:00 PM – 3:00 PM
- Mah Jongg: Friday 12:30 PM – 3:00 PM
- Meet & Greet: Program and Light Lunch (Monthly)

- Movie: 3rd Saturday at 1:30 PM
- Pinochle: Tuesdays at 12:30 PM
- Pinochle: Thursdays at 12:30 PM
- Pinochle: Wednesdays at 12:30 PM
- RummiKub: Wednesday Morning 9:30 AM
- Stitch & Chat: Wednesday 10:00 to 12:00 PM

### LMT Senior Committees or groups to join:

- Sunshine
- Publicity
- Newsletter – Bi-Monthly
- Membership

### Other Activities:

- December Holiday Luncheon
- Valentine's Day Luncheon
- Day Trips
- April 11, Hunterdon Hills Playhouse

Information can be found using the QR code or by going to <https://www.lmt.org/community/seniors/>. Or call 267-394-4282.

Trips include lunch.





## Dance Arts of Yardley

Specializing in early dance instruction-  
Make the first experience  
the best it can be!

*All Ages/All Levels:*  
Ballet, Pointe, Tap, Jazz,  
Lyrical, Contemporary,  
Preschool Creative Dance,  
Hip-Hop, Adult Dance,  
Competitive Dance Teams

Centrally located in the  
Floral Vale Professional Park  
207 Floral Vale Blvd. in Yardley  
215-968-3377  
[www.danceartsofyardley.com](http://www.danceartsofyardley.com)

All studios equipped with floating  
wood subfloors for shock  
absorption and injury prevention!



## NEWTOWN FIREPLACE SHOP

*Home is where the hearth is . . .*

**Everything Fireplace, Specializing In:**  
Gas Inserts • Gas Logs • Wood Stoves • Fireplace Doors  
Mantels & Surrounds • Fireplace Accessories

**215.968.3981**

www.newtownfireplaceshop.com • 434 Penn St. Newtown, PA 18940

## RECREATIONAL OPPORTUNITIES

*A wide range of community sports organizations offer Lower Makefield Township residents recreational opportunities on a year-round basis. Many of these groups are run entirely by volunteers.*

For more information, contact the Lower Makefield Township Park & Recreation Office: 267-274-1110.

### **BASEBALL, SOFTBALL & T-BALL**

#### **Pennsbury Athletic Association (PAA)**

*T-ball, softball, baseball; age 4 to 18*

P.O. Box 297

Yardley, PA 19067

215-736-9550

<http://www.paaball.com>

#### **Morrisville Little League (MLL)**

*M/F, baseball/softball, ages 4 to 16*

P.O. Box 255

Morrisville, PA 19067

[morrisvillittleleague@gmail.com](mailto:morrisvillittleleague@gmail.com)

#### **Lower Bucks Softball Association**

*Adult softball league*

Pennsbury school district locations

215-750-1109

### **BASKETBALL**

#### **Pennsbury Regional Basketball League (PRBL)**

*Male/Female Grades K to 11, Travel and instructional*

[www.prbl.org](http://www.prbl.org)

#### **Lady Falcons Elite Hoops**

*Female, grades 2 to 12; biddy ball.*

*Developmental league with travel and in-house programs*

[ladyfalconselitehoops@gmail.com](mailto:ladyfalconselitehoops@gmail.com)

[www.leaguelineup.com/welcome.asp?url=lfehoops](http://www.leaguelineup.com/welcome.asp?url=lfehoops)

#### **Falcons Elite Hoops**

*Male - K to 12 developmental organization. Offering opportunities for all skill levels to play in either in house and/or travel leagues. Also offering skill-based training for individuals and teams.*

[falconselitehoops@gmail.com](mailto:falconselitehoops@gmail.com)

<http://www.falconselitehoops.com/>

### **CAMPS & ENRICHMENT PROGRAMS**

#### **Bucks County Community College**

*Male/Female, ages 4 to adult. Various enrichment programs/camps.*

275 Swamp Road

Newtown, PA 18940

215-968-8409

[www.bucks.edu/kidsoncampus](http://www.bucks.edu/kidsoncampus)

#### **Bucks County Parks & Recreation**

*Male/Female, ages 4 to adult.*

*Various programs.*

901 E. Bridgetown Pike, Langhorne, PA 19047

215-757-0571

#### **Pennsbury School District**

*Community Services*

School district locations

Adult Programs

215-428-4100

### **FITNESS**

#### **YMCA – Morrisville & Fairless Hills**

*Roller hockey, various programs*

100 North Pennsylvania

Morrisville, PA 19067

215-736-8077 or 215-949-3400

#### **Newtown Athletic Club**

*Various indoor sports programs; M/F*

215-968-0600

Rt. 413 & Penns Trail

Newtown, PA 18940

### **FOOTBALL**

#### **Lower Makefield Football Association (LMFA)**

*Ages vary, flag/tackle*

P.O. Box 401

Yardley, PA 19067

[info@lmfafootball.org](mailto:info@lmfafootball.org)

### **CHEERLEADING**

#### **Pennsbury Falcons Cheerleading Association**

*Sideline and competition cheerleading.*

<https://www.pfcacheerleading.org>

### **LACROSSE**

#### **Lower Bucks Lacrosse League (LBLL)**

*Lacrosse, instructional & travel.*

*Male/Female, Grades 3 to 8*

P.O. Box 861, Yardley, PA 19067

215-914-1100 Ext.4653

<http://lowerbuckslacrosse.org/>

### **RUGBY**

#### **Yardley Makefield Rookie Rugby - USA**

*Coed Clinics grades K-4; Coed Clinics and Games grades 4-8; Summer (Local Clinics & Travel Tournaments) & Fall (Local Clinics & Local Games) Seasons*

215-495-7773

[ymrookierugby@gmail.com](mailto:ymrookierugby@gmail.com)

[www.yardleyrugby.com](http://www.yardleyrugby.com)

### **SOCCER**

#### **Yardley Makefield Soccer (YMS)**

*M/F Ages 4 – Adult; Travel & Intramural*

P.O. Box 925

Morrisville, PA 19067

<http://www.ymsoccer.net>

### **SWIM & DIVE**

#### **The Pool at LMT – Swim & Dive Team and Program**

*Male/female, Ages, 6 – 18. Competitive, recreational, and dive options*

Contact through website: [www.lmtswim.com](http://www.lmtswim.com)

#### **Penn Aquatics**

*Male/Female all ages; program at Pennsbury High School field house on Hood Blvd. in Fairless Hills, PA*

[pennregistrar@pennaquatics.com](mailto:pennregistrar@pennaquatics.com)

[www.pennaquatics.com](http://www.pennaquatics.com)

### **TENNIS**

#### **Yardley Makefield Tennis**

*Male/Female, ages vary; clinics, camps, lessons*

683 Friar Drive

Yardley, PA 19067

215-295-0558

[www.YMTennis.com](http://www.YMTennis.com)

#### **Pennsbury Racquet Club**

*Indoor tennis courts, multi-purpose sports room, fitness facility, camps*

375 West Trenton Avenue

Morrisville, PA 19067

215-736-0248

[www.pennsburyrac.com](http://www.pennsburyrac.com)

#### **Bucks County Racquet Club**

*Indoor tennis courts, outdoor Har-Tru courts, clinics, camps, lessons, & leagues*

1150 Lord Sterling Road

Washington Crossing, PA 18977

215.493.5666

[www.buckscountyracquetclub.com](http://www.buckscountyracquetclub.com)

### **PICKLEBALL**

#### **Lower Makefield Township Pickleball Meetup**

*Recreation Club*

267-789-0806

Email: Bonnie Gannon [bonnieg@lmt.org](mailto:bonnieg@lmt.org)

[https://www.meetup.com/Morrisville-](https://www.meetup.com/Morrisville-Playing-Pickleball-Meetup/)

[Playing-Pickleball-Meetup/](https://www.meetup.com/Morrisville-Playing-Pickleball-Meetup/)

[prinfo@lmt.org](mailto:prinfo@lmt.org)

ROOFING ■ SIDING ■ WINDOWS ■ DOORS ■ SUNROOMS ■ BATHROOM REMODELING ■ BASEMENT FINISHING ■



*Do It Rite!*

Your local home remodeling contractor!

*Specializing In*

- Kitchens
- Bathrooms
- Sunrooms
- Additions
- *and much more!*

*Call us*

**Toll-FREE 1+ (888) 392-7483**

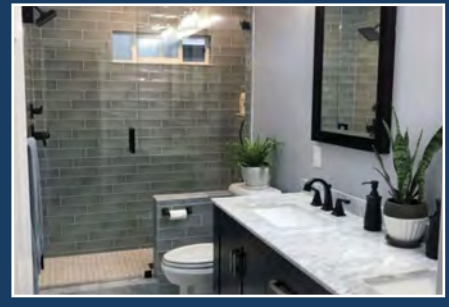
or

**Local 1+ (267) 393-4555**

**Visit Our Showroom**  
 166 S. Main St.,  
 Yardley, PA 19067

**ImproveRite**  
 166 S. MAIN ST., YARDLEY PA 19067  
 Visit us at [2improverite.com](http://2improverite.com)

LIKE US ON  **facebook.**  **HomeAdvisor**  

ROOFING ■ SIDING ■ WINDOWS ■ DOORS ■ SUNROOMS ■ BATHROOM REMODELING ■ BASEMENT FINISHING ■

GOLF · DINING · EVENTS · OUTINGS

## You're Always Invited!

Yes, as a resident of Lower Makefield Township you are always invited to enjoy Makefield Highlands Golf Club and Makefield's Public House Restaurant. As a resident you receive discounted golf rates and an increased window to book your tee times in advance. In addition to golf, the club serves as a superb dining destination, event space for "open to the public" events and private parties. With the inclusion of our outdoor patio, event tent and outdoor deck, we are able to offer Fresh Air Dining. We offer an award-winning driving range; short game area and our PGA teaching professional staff includes some of the best instructors and clinicians in Pennsylvania.

It's winter time at the golf course, and we are always open, weather permitting. The crisp mornings make for a great walk as you enjoy some of the best vistas and great playing conditions. Call us first or check our website to make sure we are open.



## Gift cards make great gifts!

For any Occasion!



POWERED BY



**TOPTRACER RANGE™**

[makefieldhighlandsgolf.com](http://makefieldhighlandsgolf.com)



Now with **NEW** Junior Tees!

Great for getting ready for school teams!



*Our Winter Season*  
**HAPPY HOUR**  
Thursdays through Saturdays 3pm - 6pm  
1418 WOODSIDE ROAD • YARDLEY, PA • 215.321.7000

**HOST YOUR EVENT WITH US!**



**Make every occasion a memorable one!**

**Full Service Catering, Cocktail Bar, and Gorgeous Views**

Our dedicated staff will make every detail of planning and hosting your event stress free.

**Call Elisa at 215.321.7000 x107**  
**events@makefieldhighlandsgolf.com**

# RECENT HOME SALES



	Address	Beds	Baths	Sold Date	Sold Price	DOM
Single Family	1422 Robinson Pl	3	2	10/6	\$439,000	5
	1001 Countess Dr	5	2/1	10/13	\$985,000	5
	2065 Farmview Dr	5	2/1	10/17	\$975,000	6
	1364 Gates Cir	4	2/1	10/24	\$800,000	2
	1365 Colony Way	4	2/1	10/24	\$735,000	46
	16 Olivia Dr	3	2	10/25	\$586,000	4
	1 Alton Rd	4	3/1	10/27	\$825,000	17
	1999 Kirkbride Cir	3	2/1	10/30	\$641,000	2
	1325 Moon Drive	5	3	10/30	\$697,000	6
	25 Manor Ln	2	1	10/31	\$435,000	5
	2128 W Wellington Rd	3	2/1	10/31	\$550,000	20
	967 Edgewood Rd	3	2/1	11/1	\$579,900	8
	1319 Albright Dr	5	2/1	11/1	\$813,050	13
	1530 Yardley Newtown Rd	3	1/1	11/3	\$375,000	63
	46 Sutphin Rd	4	2/1	11/9	\$739,999	8
	1850 Windflower Ln	3	2/1	11/14	\$767,000	17
	266 Cinnabar Ln	4	2/1	11/15	\$827,500	5
	1214 Woodside Rd	4	3/1	11/17	\$925,000	44
	978 Weber Dr	4	3/1	11/21	\$755,000	5
	11 Del Rio Dr	3	2	11/22	\$360,000	0
	1980 Knight Cir	3	2/1	11/28	\$599,000	23
	362 Saly Rd	3	2	11/29	\$580,000	7
	56 Bedford Pl	3	2/1	11/30	\$520,000	5
	1515 Brookfield Rd	4	3/1	11/30	\$999,000	22
	1551 Brookfield Rd	4	2/1	12/1	\$1,050,000	12
	407 Essex Ln	4	2/1	12/1	\$825,000	22
	104 Pine Ln	3	2	12/4	\$415,000	7
	102 Arborlea Ave	4	1	12/5	\$425,000	37
840 Winthrop Dr	5	2/1	12/6	\$711,000	10	
112 W College Ave	3	2	12/7	\$573,210	5	
1105 Pratt Dr	3	2/1	12/8	\$606,000	4	
1355 Brentwood Rd	4	2/1	12/13	\$1,001,000	5	
373 Saly Rd	4	2/1	12/15	\$615,000	8	
228 Penn Valley Ter	2	2/1	12/15	\$475,000	29	
194 Crestview Way	5	3/2	12/15	\$785,000	76	
1624 S Crescent Blvd	3	2/1	12/21	\$531,000	6	
428 Stony Hill Rd	3	1/1	12/21	\$630,100	11	

	Address	Beds	Baths	Sold Date	Sold Price	DOM
Single Family (cont)	1051 Erin Ct	4	2/1	12/22	\$735,000	3
	204 Arborlea Ave	4	3/0	12/22	\$825,000	4
	515 River Rd	4	2/1	12/22	\$802,400	40
	1379 Heller Dr	4	2/1	12/27	\$925,000	11
	520 Mill Rd	4	2/1	12/28	\$770,000	15
	1221 Yardley Rd	4	2/1	1/8	\$777,500	10

	Address	Beds	Baths	Sold Date	Sold Price	DOM
Condo/Townhouse	3 Sutphin Pnes	2	2/1	10/5	\$450,000	71
	33 Griffin Way	3	3/1	10/6	\$660,000	52
	1806 Sterling Rd #43	2	2	10/10	\$405,000	5
	690-B Rose Hollow Dr	2	2	10/10	\$382,000	5
	7701 Spruce Mill Dr	3	2/1	10/10	\$388,000	32
	1367 Sweetbell Ct	3	2/1	10/12	\$479,900	5
	6807 Spruce Mill Dr	2	2/1	10/13	\$395,000	13
	545 Cedar Hollow Dr	2	2	10/18	\$383,000	5
	34 Sutphin Pnes	3	2/1	10/27	\$500,000	21
	2604 Waterford Rd	3	2/1	10/27	\$460,000	3
	628-B Rose Hollow Dr	2	2	10/30	\$380,000	8
	22 Sutphin Pnes	2	2/1	11/3	\$428,000	3
	627 Rose Hollow Dr #A	2	2	11/6	\$375,000	30
	61 Sutphin Pnes	3	2/1	11/16	\$415,000	10
	1641 Covington Rd	3	2/1	12/8	\$505,000	36
	503 Carmela Way	4	2/1	12/15	\$830,000	1
	3003 Danbury Ct	2	2	12/15	\$355,000	7
	336 Rowantree Cir	2	2/1	12/18	\$425,000	5
	1610 Lakeview Cir	3	2/1	12/18	\$530,000	45
	9104 Sheffield Dr	2	2/1	12/19	\$411,400	6
570 Cedar Hollow Dr	2	2	12/20	\$375,000	4	
1803 Lynbrooke Dr	2	2/1	12/27	\$390,000	14	
1706 Waterford Rd	3	2/1	1/5	\$435,000	99	

	Address	Beds	Baths	Sold Date	Sold Price	DOM
55+	225 Grant Way	3	2	10/4	\$700,000	13
	113 Iris Way	2	2/1	10/13	\$664,000	94
	216 Roosevelt Dr	3	2	10/31	\$779,000	12
	1761 Mulberry Way	3	2/1	11/8	\$735,000	12
	326 Dunhill Way	3	2/1	12/14	\$780,000	4
	1680 Dobry Rd	3	2/1	12/15	\$816,669	71
1690 Dobry Rd	3	2/1	12/15	\$797,825	71	

Above are the past 90 days of all closed home sales in LMT across all brokerages, as of publishing date of 1/10/24. Information deemed accurate but not guaranteed. Source: Bright MLS

## Prepare for Spring

Spring is just around the corner - Use these tips to help get your home out of hibernation.

- **Check the Roof:** Inspect the roof for any damage that might have occurred during the winter. Look for missing or damaged shingles and address any issues promptly.
- **Test Sump Pump:** If you have a sump pump, test it to ensure it's functioning correctly. This is crucial as spring often brings increased precipitation.
- **Prep the Lawn:** Rake and remove dead leaves and debris from the lawn. Consider aerating the soil and applying fertilizer to promote healthy spring growth.
- **Prune Trees and Shrubs:** Late winter is an ideal time to prune trees and shrubs before new growth begins. Remove dead or damaged branches to encourage healthy growth.
- **Inspect the Exterior:** Walk around your home and inspect the exterior for any signs of damage. Look for cracks in the foundation, peeling paint, or loose siding.
- **Clean Outdoor Furniture:** If you have outdoor furniture, give it a good cleaning before spring. This ensures it's ready for use and prolongs its lifespan.



THE **Kim Rock** GROUP

**kw**  
KELLERWILLIAMS.  
REAL ESTATE

(215) 650-7007

info@thekimrockgroup.com

Find us on   
@thekimrockgroup



KELLERWILLIAMS **Luxury** INTERNATIONAL **kw** | Relocation





PORK CHOPS,  
SIRLOIN & CHICKEN  
KABOBS, C.A.B. STEAKS,  
C.A.B GROUND BEEF,  
SPARE RIBS...

# WHAT'S COOKIN'?



**MCCAFFREY'S**  
FOOD MARKETS

**YARDLEY: 635 HEACOCK RD. • (215) 493-9616 • MCCAFFREYS.COM**

Lower Makefield Township  
1100 Edgewood Road  
Yardley, PA 19067

Presort Standard  
U.S. Postage  
PAID  
Permit No. 550  
Lehigh Valley, PA

SPRING 2024



This Community Newsletter is produced for  
LOWER MAKEFIELD TOWNSHIP by Hometown Press  
(215) 257-1500 • All rights reserved®

To Place An Ad Call or Email Peggy Kucipak at Hometown Press • 215-262-3617 ♦ [peggy.cbn@gmail.com](mailto:peggy.cbn@gmail.com)

PLUMBING • HEATING • COOLING • ELECTRICAL • DRAIN CLEANING

**McHales**  
*Since 1950*

[mchales.net](http://mchales.net) 215-600-4859

**Neighborhood  
Discount  
\$50 Off  
Any Service Work**

\*\*Restrictions may apply\*\* Not to be used with any other  
McHales coupon or discount



**Tim McHale**  
Owner and Resident

**MARCOLLA**  
REALTY

**Expect Better**



Melissa Watson

O. 267-291-0400  
C. 404-921-8089  
444 S. State St.  
Newtown, PA 18940

Mention this ad when  
buying or selling a  
home and get a free  
basic pre-listing  
inspection or 1-year  
home warranty!\*

\*Some restrictions apply

**Your Lower Makefield Experts**

[Melissa@MarcollaRealty.com](mailto:Melissa@MarcollaRealty.com)

[MarcollaRealty.com](http://MarcollaRealty.com)

**Highly experienced board  
certified orthodontists  
The most advanced and  
proven treatments**

- ✓ Affordable financing options
- ✓ Most insurance plans accepted
- ✓ Early morning & evening appointments available

Dr. Jordan  
Cogan

Dr. Cathleen  
George



**CG Orthodontics**

Richboro  
51 Almshouse Road  
Richboro, PA 18954  
215-355-5995

Yardley  
1703 Yardley-Langhorne  
Road  
teethstraight.com