

SUMMER 2025



LOWER MAKEFIELD TOWNSHIP



LOOK INSIDE

Township Directory.....	3	Park Bench Donation Program	13	It's Hot Out	19
Finance	4,6	Sponsorship Opportunities	14	Solar Lightning.....	20
Volunteer Opportunities	7	Save the Date	14	Lower Makefield Township Seniors.....	21
Fire Services	8	2025 Tickets.....	14	Township Owned Recreational Facilities ..	22-23
Community Development.....	9	Adult Fitness & Wellness	15	Recreational Opportunities	24
Playground Safety	11	Youth Arts, Fitness and Wellness, STEM ...	16	How to Avoid a Scam.....	25
Parks and Recreation.....	13-21	Summer Camps.....	16	Makefield Highlands.....	26-27
Youth Committee	13	Adult Art Classes	17	Summer Weather Hazards.....	28
LMT Dog Park	13	Pickleball	17	Lightning Safety	29
Park Pavilion Permit Requests	13	Pool Membership.....	18-19		

TOWNSHIP OFFICE: 1100 Edgewood Rd, Yardley, PA 19067

Phone: 267.274.1100 | Visit us at www.lmt.org

NEWTOWN FIREPLACE SHOP



CALL US TODAY TO SCHEDULE

215-968-3981

434 Penn St. Newtown PA 18940

www.NewtownFireplaceShop.com

Chimney Sweeps and Repairs | Fireplace Service
Masonry Restoration | Installation | Fireplace Doors
Direct Vent Inserts | Stoves

UPGRADE TO UNSTOPPABLE.

FROM MARCH 1, 2025 - MAY 31, 2025 RECEIVE

INSTANT REBATES
UP TO \$650*

*TERMS AND CONDITIONS APPLY. CALL FOR DETAILS.



It's Hard To Stop A Trane.



*See your participating independent Trane Dealer for complete program eligibility, dates, details, and restrictions. Available through participating independent Trane Dealers. Special rebates from \$75 up to \$650. All sales must be to homeowners in the United States. Void where prohibited. Valid on Qualifying Equipment only. Offer expires 05/31/2025.

215-968-7477 | www.HarrisComfort.com



REMINGTON
& VERNICK
ENGINEERS

— Building Better Communities Since 1901 —

Lower Makefield Corporate Center, North Campus
1010 Stony Hill Road, Suite 175
Yardley, PA 19067

267-394-4500
rve.com

GUTTER CLEANING

Gutter Cleaning, Gutter Replacement, Gutter Guards

Gutter Girlz 215-355-2006
guttergirlzservices@gmail.com
GutterGirlz.com
Licensed & Insured



Dance Arts
of Yardley



Specializing in early dance instruction-
Make the first experience
the best it can be!

All Ages/All Levels:
Ballet, Pointe, Tap, Jazz,
Lyrical, Contemporary,
Preschool Creative Dance,
Hip-Hop, Adult Dance,
Competitive Dance Teams



Centrally located in the
Floral Vale Professional Park

207 Floral Vale Blvd. in Yardley
215-968-3377
www.danceartsofyardley.com

All studios equipped with floating
wood subfloors for shock
absorption and injury prevention!

YARDLEY JEWELERS

GOLDSMITH • SILVERSMITH • PLATINUMSMITH
GEMOLOGIST • APPRAISER



your scrap gold



my sketches



my CAD model



your new ring

2 South Main St. Yardley, PA 19067
215-493-1300

www.yardleyjewelers.com



TOWNSHIP DIRECTORY

1100 Edgewood Road, Yardley, PA 19067
Phone: 267-274-1100 • Website: www.lmt.org

BOARD OF SUPERVISORS



Daniel R. Grenier, Chair
267-274-1191
Email: dgrenier@lmt.org



John B. Lewis, Vice Chair
267-274-1143
Email: jlewis@lmt.org



Suzanne S. Blundi, Supervisor
267-274-1145
Email: sblundi@lmt.org



Matt Ross, Treasurer
267-274-1146
Email: mross@lmt.org



James McCartney, Supervisor
267-274-1147
Email: jmccartney@lmt.org

TOWNSHIP DEPARTMENTS

Lower Makefield Township is dedicated to the well-being of our residents. To focus on the health of the public and our employees, we encourage residents to call or email the Township before coming to our buildings. Your questions can be answered on the phone and much of our permitting and registration can be done electronically. Citizens can submit any requests, questions, observations or concerns on issues directly related to Lower Makefield Township through the Online Permitting & Citizen Requests portal. <https://townshiplowermakefieldpa.viewpointcloud.com/>

POLICE

- Questions and concerns, of a non-emergency nature, can be addressed by calling (215) 493-4055 between 8:30 A.M. – 4:30 P.M. We can also give insights on email and other digital means of obtaining information as opposed to coming into the offices.
- For all non-emergency issues, that require a police officer, please call non-emergency dispatch at (215) 493-4011.
- For all emergencies please dial 911.

PARKS AND RECREATION

- Park related permits, pavilion rentals, discount tickets, and class registration questions can be addressed by calling 267-274-1110.
- Registrations can be completed at <https://register.communitypass.net/LowerMakefield>.
- Dog Park questions can be addressed by calling 267-274-1105 or by emailing dogpark@lmt.org.
- Pool related questions can be addressed by calling 267-274-1105 or by emailing communitypool@lmt.org.
- Pickleball related questions can be addressed by calling 267-789-0806 or by emailing Bonnie at bonnieg@lmt.org

PUBLIC WORKS

- If you have a concern or question, please call the main Public Works number at 267-274-1130 or by emailing susanr@lmt.org with cc to derekf@lmt.org.
- Right of Way/Road Occupancy permits must be submitted in the Online Permitting & Citizen Requests portal: <https://townshiplowermakefieldpa.viewpointcloud.com/>

CODES AND ZONING

- Building, Moving, Sewer Lateral Inspection, Use & Occupancy (for non-residential properties) & other Township permits must be submitted in the Online Permitting & Citizen Requests portal: <https://townshiplowermakefieldpa.viewpointcloud.com/>
- Questions regarding anything related to Building Permits can be made via phone call to 267-274-1126.
- Questions regarding Zoning/Planning issues or other permits can be made via phone call to 267-274-1123 or via email at jimm@lmt.org.



FINANCE

Lower Makefield Township is proud to announce that Moody's Ratings has upgraded the Township's general obligation bond rating from Aa2 to Aa1, reflecting our strong financial management, healthy reserves, and stable economic outlook.

In its report, Moody's cited the Township's sound fiscal policies, strong fund balance, and prudent budgeting as key factors in the upgrade. The rating also reflects Lower Makefield's diverse tax base, solid financial position, and low debt burden.

"This upgrade is a testament to our commitment to responsible financial management and long-term planning," said Township Manager David W. Kratzer, Jr. "It reinforces the strength of our local economy and our ability to maintain essential services while keeping taxes stable."

The Aa1 rating is one of the highest credit ratings a municipality can receive and may result in lower borrowing costs, saving taxpayer dollars on future projects. Lower Makefield Township remains dedicated to fiscal responsibility and strategic growth to benefit residents and businesses alike.

The Moody's Credit Opinion can be accessed here. For additional information on the Moody's Rating Scale, please click here.

Lower Makefield Township 2024 Financial Update - By Mega Bhandary, Chief Financial Officer

As we reflect on the Township's financial performance for 2024, we are pleased to report that we made significant strides in managing revenue and expenses. Overall, the Township achieved 94% of its revenue target and 79% of its expense budget. While revenue was 6% below projections, our diligent control of expenses allowed us to keep costs under budget and exceed our revenue expectations. When compared to 2023, the Township saw a positive trend with a 6% increase in revenue and a 9% reduction in spending. This improvement is even more notable considering the inclusion of American Rescue Fund dollars in 2023, the addition of millage for the Road Improvement Fund in 2024, and a slight increase in the debt fund millage. These changes balanced each other out, contributing to overall progress.

On the expenditure side, we delayed certain projects, which helped keep spending lower than in 2023, aligning with our incoming revenue.

General Fund Highlights

The General Fund, which supports the Township's day-to-day operations, performed well in 2024, achieving 100% of its revenue target. This reflects a high level of accuracy in revenue projections. Most revenue sources met or exceeded expectations, particularly in interest earnings, which benefitted from stable interest rates and the Township's diversified investment strategy. Additionally, we saw stronger-than-expected revenues from grants, fines, police services, and local Act 511 taxes.

However, expenses exceeded the budget by 1%, primarily due to unforeseen project changes and staffing updates, which were necessary to address emergencies like stormwater projects and to meet the demands of a competitive labor market. Despite these adjustments, the Township experienced a 7% increase in revenue compared to 2023. This increase was partly driven by a planned interfund transfer from the recently sold Sewer Authority, which was budgeted at over \$1M. Revenue also exceeded expectations in areas like Interest Earnings, grants, and local taxes.

Continued on page 6

Stop in the Charles Schneider Club Room for a Cold Drink, Sandwich or Hot Dog

NESHAMINY VALLEY GOLF CLUB

OPEN TO THE PUBLIC
Central Bucks
Jamison Location
WWW.NESHAMINYGOLF.COM
215-343-6930
GOLFNOW

We have a New Irrigation System Installed for 2025!

2025 RATES

Call Pro Shop 215-343-6930 for Tee Times or Book Online at www.Neshaminygolf.com

WEEKDAYS (Monday-Friday, Excluding Holidays)		
	Walking	Riding
Seniors	\$28.00	\$40.00
Regular	\$35.00	\$47.00
Heroes (Active Military, Fire, Police, Ambulance)	\$28.00	\$40.00
After 2:00 (Everyone)	\$28.00	\$40.00

OPEN TO THE PUBLIC!
Email: NeshaminyValleyGC@yahoo.com
WWW.NESHAMINYGOLF.COM
440 Almshouse Road, Jamison Pennsylvania, Central Bucks County Location

Established 1971

WEEKENDS (Saturday & Sunday Plus Holidays)		
	Walking	Riding
Regular	\$45.00	\$57.00
After 2:00 (Everyone)	\$35.00	\$47.00

Congregation Brothers of Israel
A MODERN CONSERVATIVE SYNAGOGUE
All Are Welcome

Feel the energy behind a growing and inclusive congregation and an evolving exploration of Jewish Life

ACTIVE MEN'S CLUB SISTERHOOD P.T.O.

- In Person Services
- On Line Services
- Talmud Classes
- Adult Education Programs
- Tet Shabbats
- Hebrew School
- Confirmation Classes
- Adult Education Programs
- Shabbat Under the Stars
- Social Events

530 Washington Crossing Road, Newtown, PA 18940
215 579-2000 www.cboi.org



Over 10 specialties under one roof.

We know the best care starts at home. From primary care and cardiology to radiology, orthopaedics and beyond, Penn Medicine Bucks County brings specialty care closer to you. So wherever you are in your health care journey, you won't have to go far. We're just around the corner.

Penn Medicine Bucks County

777 Township Line Road | Yardley, PA 19067

**Discover more at PennMedicine.org/BucksCounty
or call 215.860.0775**



Penn Medicine

Park and Recreation Department Performance

The Park and Recreation Department, which oversees a variety of funds and programs, secured 75% of its budgeted revenue in 2024. The shortfall was primarily due to delays in grant-related projects, as grant revenue is received only upon project completion. Despite this, the department exceeded its budget in program fees and light cost recovery, with interest earnings also surpassing expectations.

On the expense side, the department spent only 60% of its budget, thanks to delayed projects and effective cost management. Year-over-year, revenue increased by 6%, and when excluding light cost recovery, the department still exceeded its budget by 3%. This growth was largely due to higher program fees and additional state grants.

Pool Fund Performance

The Township's pool, managed by the Park and Recreation Department, faced challenges in 2024. Despite efforts to boost membership through increased fees and promotional incentives, pool revenue reached only 79% of its budget, with 48% of that covered by an interfund transfer from the Park and Recreation Department. Membership remained below target, and interest earnings also fell short due to a lower-than-expected cash balance.

On the expense side, the pool came in at 75% of the budget, with savings largely due to the absence of a pool manager and lower overall spending. Compared to 2023, revenue increased by 2%, excluding the interfund transfer. This increase was driven by higher membership fees and sales. On the expense side, there was a decrease, primarily due to intentional cost-cutting measures and a reduction in staffing.

Golf Course Performance

The Township's golf course, managed by Spirit Golf Management, exceeded its revenue target by 15% in 2024. Golf participation, food and beverage sales, and interest earnings all contributed to this success. However, expenses were higher in some areas, though they remained in line with revenue. Notably, \$755,000 in expenses were related to interfund transfers, which included payments for bond loans and capital projects.

Despite these higher costs, the golf course generated a profit of \$847,241 in 2024. Year-over-year, while revenue exceeded the 2023 figures, costs rose by approximately 10%, resulting in a \$36,656 decrease in profit compared to the previous year.

Financial Position and Conclusion

Looking at the Township's overall financial position, our preliminary ending fund balances and net positions for 2024 are higher than both 2023 and budgeted amounts. This improvement is largely due to interfund transfers, higher-than-expected revenue in areas like interest earnings, and project delays that reduced overall spending. However, it's important to note that a significant portion of our cash is tied to the sewer sale and 2016 bond proceeds, which must be spent within the required timeframe to avoid restrictions.

In conclusion, 2024 was a stable year for the Township, both compared to the budget and to 2023. While we have worked diligently to manage our revenue and costs, we must look ahead to sustain the services we provide. Many revenue streams are stabilizing or declining, and without the sewer sale funds and bond proceeds, our revenue base is shrinking. We will need to continue exploring new revenue sources to ensure we can maintain the high-quality services our community relies on.



**SINCE
JAMMER DOORS
1920**

**105 Years of Experience & 4 Generations
of Jammer Quality & Commitment**

VISIT OUR SHOWROOMS

<p>Lawrenceville, NJ 2850 Brunswick Pike (Business Rt. 1) 609-883-0900 Mon-Fri: 8am - 4pm Saturday 8am - 12noon</p>	<p>Yardley, PA 10 N Main Street (At The Gristmill) 215-493-7709 Mon-Fri: 10am - 4pm</p>
---	---

Toll Free 1-800-448-1920

NJ HIC# - 13VH02000800 PA HIC# - 022787

www.jammerdoors.com

Garage Doors • Operators • Gate Openers • Entry Doors • Patio Doors • Storm Doors • Windows

VOLUNTEER OPPORTUNITIES

Volunteer Opportunities in Lower Makefield Township: Get Involved!

Lower Makefield Township is seeking volunteers to join several important committees and make a difference in the community. If you have some free time and want to give back, this is a great opportunity to engage with local boards and commissions that help shape the Township's future. Whether you have a passion for environmental sustainability, traffic safety, or community recreation, there's a role for you.

The Township is currently looking for volunteers for the following committees:

1. **Citizens Traffic Committee** – Help evaluate and address traffic concerns in the community, providing recommendations to improve safety and flow.
2. **Disability Advisory Board** – Work to ensure that the needs of residents with disabilities are met, advocating for accessibility and inclusivity across the Township.
3. **Electricity Reliability Committee** – Assist with efforts to improve the reliability of electrical services in the area, ensuring a consistent and safe power supply for residents.
4. **Electronic Media Advisory Committee** – Provide input on the Township's digital presence, helping to enhance communication and engagement through electronic media platforms.
5. **Environmental Advisory Council** – Collaborate on initiatives to preserve and protect the local environment, from managing natural resources to promoting sustainability.
6. **Golf Committee** – Join others in overseeing the management and development of the Township's golf courses, ensuring they are well-maintained and accessible to all.
7. **H.A.R.B (Historic Architecture Review Board)** – If you're a licensed real estate broker, this committee focuses on reviewing and preserving the historic integrity of structures within the Township.
8. **Park & Recreation Board** – Be part of the team that advises the Board of Supervisors about planning, laying out, and maintaining parks, recreation facilities and programs.
9. **Trenton Mercer Airport Review Panel** – Offer valuable input on the operations and impact of the Trenton Mercer Airport, ensuring it serves the community responsibly.

Volunteering on one of these committees is a rewarding way to contribute to the growth and improvement of Lower Makefield Township. Not only will you have the chance to bring your skills and ideas to the table, but you'll also gain the satisfaction of making a positive impact on your community.

If you're interested, please email your letter of interest and resume to admin@lmt.org. This is your chance to get involved and make a real difference. Join us today and be a part of Lower Makefield's continued success!

Progress at Patterson Farm: The Janney Historic Homestead

Lower Makefield Township and the Master Plan Implementation Committee continue to implement the Patterson Farm Master Plan, approved in December 2023, to ensure this historic site becomes a lasting legacy of history, beauty, inspiration, and community enjoyment. Below is a summary of ongoing and upcoming initiatives.

- **Building Restoration & Painting:** A painting contractor has been engaged to perform minor carpentry repairs and paint buildings where wood conditions and environmental assessments allow (the majority of structures). The work is set to begin this spring, depending on weather conditions. The project will comply with standards for the removal and/or sealing of exterior lead paint.
- **Historic Recognition & Naming:** An application has been submitted to list the entire 231-acre site, including both farmsteads, on the National Register of Historic Places. This designation will recognize the site's historic significance, help ensure its preservation, and support future grant applications. The historical review identified a more historically accurate name for this property. While our community knows it as Patterson Farm, the National Register requires identification based on its historical origins. The official submission name is the "Thomas Janney Homestead Historical Agricultural District," honoring Janney, who received the original land grant from William Penn and established the first buildings. Moving forward, we will transition to using the new shorthand reference: "Janney Historic Homestead at Patterson Farm."
- **Formation of the Janney Farmstead Foundation:** A new independent nonprofit, "Janney Farmstead Foundation @ Patterson Farm," will be established in 2025. This foundation will enter into a long-term lease agreement with LMT to manage, restore, and sublease the property, excluding the agriculturally preserved crops and woodlands. The foundation will have the ability to raise capital and seek volunteers for repairs and restoration through charitable contributions. It will serve as the landlord for the AOY Arts organization and potentially other future tenants.

Together, Lower Makefield Township and the Janney Farmstead Foundation will ensure that the Janney Historic Homestead at Patterson Farm becomes a treasured, township-owned asset—preserving history while enhancing community engagement and enjoyment.

FIRE SERVICES



For years the dramatic decline in the number of volunteer firefighters, particularly young ones, has been threatening the ability of fire departments to provide an essential public service. Most people may not think this potential crisis impacts them, however almost 70 percent of firefighters across the nation are volunteers. In 2018, the National Fire Protection Association (NFPA) reported many volunteer firefighters in the United States are over the age of 50 and while the number of volunteer firefighters is decreasing, the demand for fire and rescue services is increasing.

Longer working hours, longer commutes, and the rise of dual-income households have left less time for

volunteering. Firefighters are aging and not being replaced. Pennsylvania is the birthplace of the volunteer fire company and to this day most firefighting in the state — and in the country — is done by volunteers. In the 1970s, Pennsylvania had 300,000 volunteer firefighters, today, it has around 38,000.

The major contributing factor to the volunteer firefighter shortage is quite simple. It is hard to recruit candidates when the job will inevitably not pay them what their work is worth. Most volunteer firefighters have full-time jobs, so the idea of taking on another full-time job with little to no pay is a hurdle volunteer fire departments have had to deal with for years.

In October 2023, the Bucks County Commissioners approved a tax rebate program that rewards the contributions volunteer members of fire companies and nonprofit emergency medical service agencies make to their communities. Under the County's newly established Active Volunteer Service Tax Rebate Program, volunteer firefighters and EMS personnel can see up to \$1,000 in county real estate tax savings each year.

This rebate is a step in the right direction to recruit and retain our volunteer firefighters, but many more steps must be taken to ensure that fire companies continue to respond and perform their duties when called upon.

The fire company is always looking for residents in the community who might be interested in joining to reach out via our website (www.yardleymakefieldfire.com). Whatever skill set you have there is a place for you in the company!

Check those dates on your smoke detectors!!! If its over 10 years old, replace it!!

Any fire related questions or concerns (non-emergency) please don't hesitate to reach out to the Fire Service Director at firesafety@lmt.org or 267-274-1127.



30 years ago, you had 15-17 minutes to escape a house fire. Today, due to synthetic materials like plastics, petroleum-based products, and modern home designs with open floor plans and larger rooms, you only have 3-5 minutes.

NOTICE TO ALL LENDERS, REALTORS, BUILDERS, & PROPERTY OWNERS

Lower Makefield Township provides assistance with flooding, drainage and structural retrofitting options, and helps in determining whether Township parcels are affected by floodplains. You should consider taking advantage of this service prior to planning a construction project, offering any property for sale, or considering buying a home.

We can arrange to meet with you or visit your property to assess any flooding issues you may have. If you need assistance or have any questions, please stop into the Community Development Department at the Township offices or contact us at 267-274-1123 to speak with our Professional Engineers and Certified Floodplain Managers.

KNOW YOUR RISK

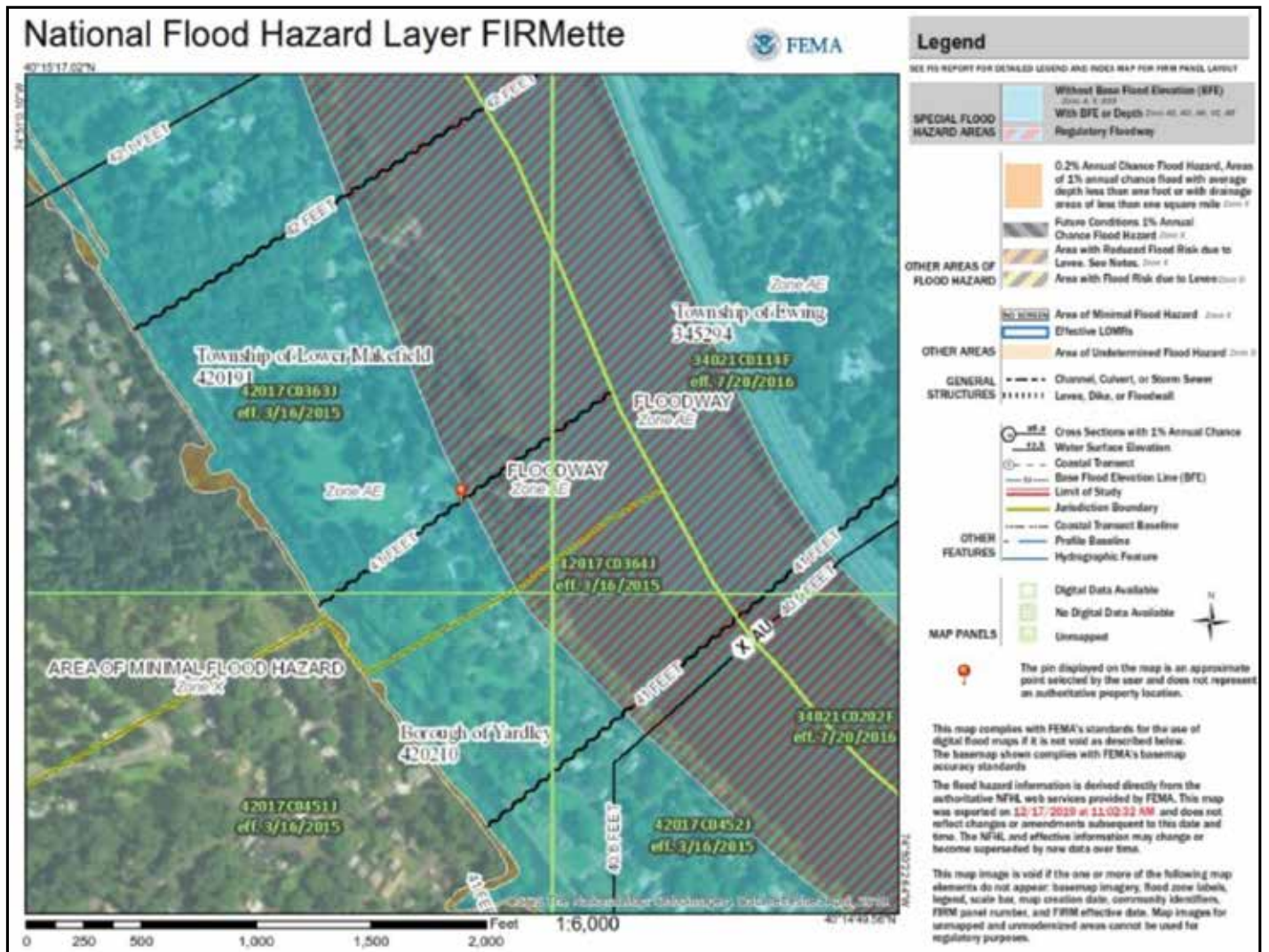
The FEMA Flood Map Service Center (MSC) Search by Address feature enables you to enter an address, a place, or a set of longitude/latitude coordinates to find the effective flood map for that location.

After locating the flood map, you can view or download it, as well as view or download any Letters of Map Change (LOMC) issued for that flood map. You can quickly assess your flood risk using these online tools. We can assist you with using this service.

For more information, you can also visit our Flood Information & Insurance webpage at: <https://www.lmt.org/departments/community-development/flood-information-insurance/>

NEW NFIP FLOOD INSURANCE QUOTING TOOL

FEMA has recently developed a new NFIP quoting tool to make it easier for homeowners & renters to understand flood risks & potential insurance costs. This tool will give potential policyholders a general understanding of what their policy could look like. All that is needed is the property address & basic information about the structure. Most users can obtain a quote in 10 minutes or less. To use the tool, please visit: <https://www.floodsmart.gov/policy-quote/>





Do It Rite!

Your local home remodeling contractor!

Specializing In

- Kitchens
- Bathrooms
- Sunrooms
- Additions
- *and much more!*

Call us

Toll-FREE 1+ (888) 392-7483

or

Local 1+ (267) 393-4555

Visit Our Showroom

**166 S. Main St.,
Yardley, PA 19067**

ImproveRite

166 S. MAIN ST., YARDLEY PA 19067

Visit us at 2improverite.com



PLAYGROUND SAFETY

A quick checklist for parents

Place this list in a prominent area of your home for quick reference. Then, before your children head out the door for the playground, check that:

- **Supervision is present, but strings and ropes aren't.**

Adult presence is needed to watch for potential hazards, observe, intercede and facilitate play when necessary. Strings on clothing or ropes used for play can cause accidental strangulation if caught on equipment.

- **All children play on age-appropriate equipment.**

Preschoolers, ages 2-5, and children ages 5-12, are developmentally different and need different equipment located in separate areas to keep the playground safe and fun for all.

- **Falls to surface are cushioned.**

Nearly 70 percent of all playground injuries are related to falls to the surface. Acceptable surfaces include hardwood fiber/mulch, pea gravel, sand and synthetic materials such as poured-in-place, rubber mats or tiles. Playgrounds surfaces should not be concrete, asphalt, grass, blacktop, packed dirt or rocks.

- **Equipment is safe.**

Check to make sure the equipment is anchored safely in the ground, all equipment pieces are in good working order, S-hooks are entirely closed, bolts are not protruding, there are no exposed footings, etc.



Checklist is from the National Program for Playground Safety (NPPS) at www.uni.edu/playground/



MOHAWK
SmartStrand
FOREVER CLEAN™

- Extraordinarily clean
- Exceptionally durable
- Environmentally friendly



NOW FEATURING
THE ONLY CARPET PROTECTION AND WARRANTY COVERING
ALL PETS. ALL ACCIDENTS. ALL THE TIME.

HOLLAND
FLOOR COVERING
RESIDENTIAL • COMMERCIAL

www.HOLLANDFLOOR.com

35 SWAMP ROAD
NEWTOWN PA
215-357-0909

VISIT OUR NEWEST
SHOWROOM!

124 E. LANCASTER AVE.
WAYNE, PA
610-947-6500

{ OUR PRICES
WILL
FLOOR YOU } { **FREE**
NO OBLIGATION
ESTIMATES }

BRING THIS AD FOR
\$100 OFF
Any purchase of \$1,500 or more
Retail only. Coupon must be presented
at time of purchase. Cannot be combined
with any other discounts. Exp 12/31/25



Carpet - Hardwood - Laminate - Vinyl - Stair Runners - Tile - Stone - Backsplashes - Bathrooms - Area Rugs

RECENT HOME SALES

	Address	Beds	Baths	Sold Date	Sold Price	DOM
Single Family	2010 Yardley Morrisville Rd	4	2/1	1/15	\$740,000	38
	520 Franklin Cir	3	2/1	1/15	\$625,500	49
	1601 Fairfield Rd	5	3	1/17	\$1,000,000	26
	1602 Penn Oak Cir	4	2/1	1/29	\$835,000	5
	597-A Long Acre Ln	4	2/1	2/5	\$875,000	8
	644 Countess Dr	5	2/1	2/6	\$680,000	49
	9 Olivia Dr	3	3	2/11	\$630,000	34
	1011 Evergreen Rd	2	1/1	2/13	\$675,000	5
	1335 Chase Rd	4	2/1	2/14	\$892,000	7
	1371 Heller Dr	4	2/1	2/14	\$715,000	5
	859 Gainsway Rd	4	2/1	2/14	\$830,000	5
	134 Knightsbridge Dr	4	2/1	2/21	\$525,000	119
	1901 Bernel Ct	3	3/1	2/21	\$719,000	139
	1612 Thistlewood Dr	4	2/1	2/21	\$1,250,000	5
	1559 Brookfield Rd	4	2/2	2/28	\$1,230,000	15
	1335 Jacob Dr	4	2/1	2/28	\$955,000	7
	375 Shade Tree Ct	4	3/1	2/28	\$1,125,000	5
	1988 Kirkbride Cir	3	3	3/3	\$680,000	44
	18 Lawndale Dr	3	2	3/7	\$460,000	5
	1633 S Crescent Blvd	4	2/1	3/7	\$575,000	4
	2114 Stackhouse Dr	4	2/1	3/10	\$854,000	5
	658-A Woodford Ln	2	2	3/11	\$325,000	82
	912 Greenway Ave	5	2/1	3/12	\$850,000	5
	630 Deerbrook Dr	4	3/1	3/14	\$1,035,000	55
	15 Highland Dr	4	2/1	3/17	\$676,000	5
	1063 Buck Creek Cir	4	2/1	3/19	\$1,280,100	6
	370 Emerald Dr	5	2/1	3/21	\$830,000	6
	1335 Knox Dr	4	2/1	3/27	\$811,000	5
	69 Upper Hilltop Rd	5	2/1	4/4	\$660,000	4
Condo/Townhome	3903 Waltham Ct	2	2	1/10	\$335,000	18
	1653 Covington Rd	3	2/1	1/21	\$533,100	19
	169 Wildflower Cir	3	2/1	1/27	\$601,000	7
	6903 Spruce Mill Dr	3	2/1	2/14	\$506,000	6
	683a Rose Hollow Dr	2	2	2/18	\$380,000	11
	3607 Waltham Ct	2	2	2/20	\$365,000	20
	632-B Palmer Ln	2	2	2/20	\$315,000	12
	677b Rose Hollow Dr	2	2	2/20	\$400,000	12
	680 Tomlinson Ln	3	2/1	2/21	\$500,000	5
	554 Aspen Woods Dr	3	2/1	2/21	\$656,000	2
	3105 Sterling Rd	2	2	2/24	\$420,000	43
	12106 Cornerstone Dr	2	2	2/25	\$350,000	7
	660-B Woodford Ln	2	2	2/28	\$435,000	151
	1601 Covington Rd	3	2/1	3/5	\$585,000	6
	1801 Windflower Ln	3	2/1	3/12	\$835,000	20
	568 Aspen Woods Dr	3	2/1	3/20	\$536,000	3
	1795-B Janney Ln	2	2	3/28	\$345,000	10
	3003 Sterling Rd	3	2/1	3/28	\$460,000	9
55+	646-A Rose Hollow Dr	2	2	3/31	\$370,000	2
	646b Rose Hollow Dr #646B	2	2	4/2	\$452,000	5
	481 Cedar Hollow Dr	2	2	4/4	\$465,000	4
	227 Grant Way	2	2	3/6	\$600,000	18
	1712 Hayes Rd	2	2	2/14	\$760,000	7
	1744 Renaissance Blvd	3	3/1	3/6	\$825,000	19
	1 Griffin Way	3	3/1	3/28	\$800,000	74

Above are the past 90 days of all closed home sales in LMT across all brokerages, as of publishing date of 4/9/25. Information deemed accurate but not guaranteed.
Source: Bright MLS

Smart Summer Maintenance

Summer is the perfect time for homeowners to tackle maintenance tasks that help keep their home in top shape while preventing costly repairs down the road. Here are essential summer maintenance tasks every homeowner should consider:

Exterior Maintenance

- Inspect and clean gutters and downspouts – Prevent water damage by ensuring they are free of debris.
- Check and repair siding and paint – Touch up peeling paint and repair any damage to siding or trim.
- Wash windows and screens – Enjoy the sunshine with streak-free, clean windows.
- Power wash driveway, walkways, and decks – Remove built-up dirt, algae, and mildew.
- Stain or seal your deck or patio – Protect wood surfaces from sun and water damage.

Yard and Landscaping

- Maintain lawn and landscaping – Mow regularly, trim shrubs, and remove weeds.
- Check for pest activity – Address signs of ants, termites, or other invaders early.

HVAC and Indoor Comfort

- Service your air conditioning system – Clean or replace filters, and consider a professional tune-up.
- Seal leaks around doors and windows – Keep the cool air in and the hot air out.
- Reverse ceiling fans – Make sure they're spinning counterclockwise for optimal cooling.

Plumbing and Water Systems

- Check outdoor faucets and hoses – Look for leaks or damage from spring use.
- Flush your water heater – Remove sediment build-up for better efficiency.

Bonus Tips

- Clean your grill – Get it ready for summer cookouts!
- Declutter the garage – Summer is a great time to reorganize and donate unwanted items.



(215) 650-7007

info@thekimrockgroup.com

Find us on  
@thekimrockgroup



KELLER WILLIAMS
Luxury kw | Relocation
INTERNATIONAL





PARKS AND RECREATION



VISION: PLAY FOR ALL

MISSION: The Parks and Recreation Department is committed to providing top-notch parks and recreation facilities and services for all residents through three key themes:

HEALTH: Improve physical health, mental health and overall quality of life by offering safe and accessible facilities and open space.

ENVIRONMENT: Act as environmental stewards through responsible use of the natural environment and protect and maintain Parks and Recreation assets.

COMMUNITY: Create opportunities for the community to connect through a wide variety of partnerships, programs, events and classes.

The Lower Makefield Township Parks and Recreation Department is located at the Community Center and is open to the public, Monday-Friday from 8:00 AM-4:30PM for field or pavilion rental requests, and to sign up for programs like the ones you will find within this guide.

You can also register ONLINE for The Pool, the Dog Park, field and pavilion permit requests, as well as classes and programs. These opportunities can be found at: register.communitypass.net/lowermakefield

(If you already have an account for The Pool, Dog Park, or from a previous class, please sign in using the same account!) For questions or feedback, please call 267-274-1110 or email prinfo@lmt.org.

YOUTH COMMITTEE

The LMT Youth Committee is made up of 9th to 12th graders who are looking to get involved in the Lower Makefield Township Community. The Youth Committee volunteers in numerous service opportunities throughout the year to help make the Township a better place for all. For more information, please visit LMT Youth Committee | Lower Makefield Township or email prinfo@lmt.org.

Mission Statement: Organize leadership, community service, and recreational opportunities for and by the youth in our community and make recommendations to the Parks and Recreation Board.

Applications for the 2025 Youth Committee Board have closed and the new committee will be chosen soon!

LMT DOG PARK

Registration information: REGISTER.COMMUNITYPASS.NET/LOWERMAKEFIELD

2025 Lower Makefield Township Dog Park Orientations - Community Center,
1550 Oxford Valley Rd, Yardley, Pa 19067, at 7:00 PM (If you already have an account for The Pool, Dog Park,
or from a previous class, please sign in using the same account!)

For questions or feedback, please call 267-274-1105 or email dogpark@lmt.org.



Residents: \$45 / for one (1) dog; \$15 for each additional dog per year

Non-Residents: \$60 / for one (1) dog; \$15 for each additional dog per year
Register online for a free upcoming dog park orientation class. After the class is complete, residents can register and pay online and bring shot records, PA dog license receipts, and the certificate from completing the class to the LMT Community Center (1550 Oxford Valley Road) or email to dogpark@lmt.org.

January 28	February 27	March 25
April 24	May 27	June 24
July 29	August 28	September 25
October 30	November 25	December 18

Orientation is held at the Community Center 1550 Oxford Valley Rd. Oxford Valley Rd. Yardley PA 19067 (located next to the Fred Allan Softball Fields).

Park Pavilion Permit Requests

Two pavilions are available for private parties and events. Kid's Kingdom at Community Park has a covered pavilion with a capacity for 30 people, and Memorial Park has a covered pavilion next to the Secret Garden Playground with a capacity for 20 people. Both pavilions have access to a bathroom, playground, grilling area, and picnic tables.

Reservations can be made online using your Community Pass account.

Pavilions Memorial Park and Pavilions		
Security Desposit	\$50	
Resident	\$50	3 Hours (min)
Resident Each additional hour	\$20	HR
Non Resident	\$100	3 Hours (min)
Non- Resident Each additional hour	\$40	HR

Park Bench Donation Program

Please note: Benches may take an extended time to deliver due to supply chain issues. This program is designed to update and improve the benches in our parks, fields, etc., while allowing community members to dedicate something lasting in memory of a loved one or a community group to sponsor and support the Township.

Bench Program		
Reimbursement for bench, labor and supplies	\$2,100	1 Bench

INFORMATION

Lower Makefield Sponsorship Opportunities

Lower Makefield Township Parks & Recreation offers many different annual events for the Community that provide potential business' the opportunity to connect with our community. Our Township events attract thousands of individuals and families each year at no or minimal cost to the residents. Your sponsorship makes this possible. The sponsorship package levels enable businesses of every type to identify sponsorships that align with their values and mission. If you have any questions or would like to obtain a sponsorship packet, please contact Kathy Howell 267-274-1105 or by email kathyh@lmt.org.

Movie in the Park Thursday, July 31st



2025 TICKETS

Discount Tickets are offered to our residents through Member Deals. You can access this site by visiting www.prps.org/memberdeals and creating your own account. Discounts are available for Disney World, Movie Tickets, Great Adventure, Dorney Park, and many others. Check out the site today!



Summer Discount Tickets are expected to arrive close to Memorial Day 2025



We Know Plumbing!

**Bathroom Remodeling
Repairs
Water/Sewer Lines
Water Conditioning
Gas Lines
And More!!**



**250 S Lincoln Avenue, Newtown Pa 18940
215-968-3901 ★ www.LucasLtd.com**

PARKS AND RECREATION

2025 Program Schedule

ADULT FITNESS & WELLNESS



Register for classes: <https://register.communitypass.net/LowerMakefield>

MONDAY

ZUMBA GOLD with Rachel

8-Week Series | Mondays | 9:00 AM

Zumba Gold is perfect for anyone who is looking for a modified Zumba class that recreates the original moves you love at a lower intensity. While it is targeted for the older active adult, anyone can join in the fun! The design of the class introduces easy to follow Zumba choreography that focuses on balance, range of motion and coordination. Come ready to sweat and prepare to leave empowered and feeling strong.

Benefits - Class focuses on all elements of fitness: cardiovascular, muscular conditioning, flexibility and balance. Have a water bottle close by.

ZUMBA FIT with Jeanine

6-Week Series | Mondays | 5:30 PM

Zumba - Take the "work" out of workout and come join the dance party! Each zumba class brings students together to sweat it out on the dance floor to latin, pop and world rhythms. It is a total workout combining all elements of fitness - cardio, muscle conditioning, balance, and flexibility with the added bonus of boosted energy. It's the perfect combination of fun and fitness!

ALL LEVELS YOGA with Jeanine

6-Week Series | Mondays | 6:30 PM

Bring balance and strength to the body and mind in this 1-hour yoga flow class. The class will consist of mindful movement through basic foundational poses with a focus on good alignment and connecting motion to breath. Each class will end with a relaxing meditation in Savasana. This class is for all levels of students with modification given to make it accessible for all and provide challenge for the seasoned practitioner. Through the practice of yoga, the physical body can be strengthened, mobility increased, and balance improved, all with the side benefits of improved mental focus and stress reduction.

TUESDAY

STRENGTH TRAINING with Sandy Tuesdays

8-Week Series | Tuesdays | 10:00 AM

This is non-cardio workout using light hand weights to work all of our major muscle groups. You will gain strength, coordination and burn calories. Let's feel better, stronger and have fun together! Bring hand weights, mat, towel and water bottle.

GENTLE YOGA EVENING CLASS with Linda

6-Week Series | Tuesdays | 6:30 PM

Gentle yoga is great for beginners and students wanting to develop and maintain flexibility and strength. Poses (asanas) and breathing techniques (pranayama) are executed at a slow and mindful pace to support each individual's comfort level.



WEDNESDAY

GENTLE YOGA with Linda

6-Week Series | Wednesdays | 9:30 AM

Gentle yoga is great for beginners and students wanting to develop and maintain flexibility and strength. Poses (asanas) and breathing techniques (pranayama) are executed at a slow and mindful pace to support each individual's comfort level.

STRENGTH TRAINING WITH SANDY WEDNESDAYS

8-Week Series | Wednesdays | 5:30 PM

This is non-cardio workout using light hand weights to work all of our major muscle groups. You will gain strength, coordination and burn calories. Let's feel better, stronger and have fun together! Bring hand weights, mat, towel and water bottle.

THURSDAY

GENTLE MAT PILATES with Christine

6-Week Series | Thursdays | 10:00 AM

Joseph Pilates described physical fitness as the first prerequisite of happiness.

Our bodies are meant to move, and Pilates is where core strengthening, postural alignment, the breath, and focused movement come together to awaken the body, ease tension, and recruit muscles that help you move with more grace and flow.

In addition to classical mat Pilates exercises, this class includes standing balance and body resistance exercises for participants at every level.

STRENGTH TRAINING WITH SANDY ON THURSDAYS

8-Week Series | Thursdays | 11:15 AM

This is a non-cardio workout using light hand weights to work all of our major muscle groups. You will gain strength, and coordination and burn calories. Let's feel better, and stronger and have fun together! Bring hand weights, mat, towel, and water bottle.

FRIDAY

ZUMBA GOLD with Rachel

8-Week Series | Fridays | 9:00 AM

Zumba Gold is perfect for anyone who is looking for a modified Zumba class that recreates the original moves you love at a lower intensity. While it is targeted for the older active adult, anyone can join in the fun! The design of the class introduces easy to follow Zumba choreography that focuses on balance, range of motion, and coordination. Come ready to sweat and prepare to leave empowered and feeling strong.

Benefits - The class focuses on all elements of fitness: cardiovascular, muscular conditioning, flexibility and balance. Have a water bottle close by.

SATURDAY

BACKPACKING FUNDAMENTALS

One Time Class | 5/17 | 12:00 PM

Join us in a two-hour session that teaches essential skills for wilderness backpacking, including Leave No Trace Principles, campsite set-up, and water filtration. Ideal for beginners and seasoned adventurers alike, it provides practical knowledge for a safe and enjoyable outdoor experience. By the end, you'll be ready to hit the trails with confidence.

2025 Program Schedule

YOUTH ARTS - SUNDAYS

Early Elementary Drawing
4-Week Series | Sundays | 9:00 AM
Ages 4 – 6

ELEMENTARY DRAWING
4-Week Series | Sundays | 10:00 AM
Ages 7 – 14

CARTOONING
4-Week Series | Sundays | 11:15 AM
Ages 8 – 14

Unlock your child's creativity with Young Rembrandts classes, perfect for preschoolers and school-aged learners alike! The engaging programs challenge curious minds, encouraging preschoolers to explore drawing subjects they love, like animals and toys. For elementary students, essential tools are provided that build confidence and artistic skills through fun, hands-on instruction. The cartooning classes add an extra layer of excitement, combining humor and imagination to keep kids engaged while they learn. Sign up today and watch your child discover their inner artist!

YOUTH FITNESS AND WELLNESS

SOCKEY HOCKEY (1ST – 5TH GRADE)
6-Week Series | Thursdays | 5:15 PM

Sockey is a safe variant of floor hockey played with neoprene sock-covered hockey sticks, soft indoor hockey balls, and players wear sneakers instead of skates. The indoor co-ed sport is created to learn the game of hockey, exercise, and have fun! Players receive a team shirt and hockey sticks are provided.

SUPER SOCCER STARS - Outdoors classes

Program Outline Soccer Stars is the area's most popular youth educational soccer program! Backed by over 20 years of experience, we teach the FUNDamentals of soccer using positive reinforcement, imaginative themes, and engaging games. Players will learn skills, physical literacy, build self-confidence, and develop teamwork in every class. Certified coaches lead age-specific programs with low kid-to-coach ratios for children ages 1-5+

EXPLORING ARCHERY DAY CAMP
5/20/25 | Ages 6-17

Shooting Star Academy will cover the fundamentals of archery, including basic archery knowledge such as proper stance, form, and target shooting. Participants will learn key skills such as how to safely handle a bow, aim accurately, and improve their technique. They will gain an understanding of archery line commands, how to hold a bow correctly, nock an arrow, aim, and group arrows on a target. The program promotes focus, discipline, and confidence while providing a fun, engaging learning environment. All equipment, materials, and safety gear provided.

YOUTH STEM

LITTLE TYKES GO ON HIKES WITH HIKING HOUND ADVENTURES
May, September, October, November | Saturday | Start Time Varies

During these 45 minute courses, Hiking Hound Adventures, LLC will be on the trail with kids and their guardians to tackle some of the most asked questions surrounding taking kids into the woods. Through fun games and hands-on activities, we cover safety, choosing the right trail, packing considerations, and much more! Each hike has a theme that ties into one of the principals of Leave No Trace

YOUTH SUMMER CAMPS

OUTDOOR ADVENTURE CAMP
7/7 – 7/11 | 9:00am to 12:00pm

Join Hiking Hound Adventures for a week long, half day camp focused on outdoor education and adventure. If your child loves the outdoors and nature, you've found the summer camp experience for them! Topics will include native species, pollinators, tree ID, map and compass training, Leave no Trace, trail safety, insects, mammals, animal tracks, and more!

BUCKS BOUNCES VOLLEYBALL CAMP
7/21 – 7/25 | 9:00am to 11:00am for 3rd – 5th grade | 5:00pm to 7:00pm for 6th – 8th grade

Bucks County Bounce Volleyball camps are designed in a fun and engaging way to introduce basic volleyball fundamentals to beginners as well as an opportunity for older and more experienced players to improve upon their skillset and work on their overall game.

CHESS KINGDOM SUMMER CAMP
8/18 – 8/22 | 9:00am to 12:00pm

Join us at our Kids Kingdom Pavilion for our Chess Kingdom Summer Camp with Chess Wizards! Chess Wizards offers summer camps for children aged 5-12. Team chess games, puzzles, skill-building, and team and individual physical games are just some of the ways we integrate the whole person into our camp activities. Each participant will receive a trophy, t-shirt, folder, and workbook!

SOCCER STARS WORLD CUP CAMP
8/18 – 8/22 | 9:00am to 3:00pm

With the 2025 Fifa Club Cup as our backdrop, we'll learn, practice and play while exploring the tournament and the history, culture, and play styles of club teams worldwide! Players will participate in fun games, relay races, skill building activities, learn fun facts/trivia, and play in their own World Cup Tournament. Children ages 6-12 are welcome, regardless of playing experience!

In addition to our in-house Camp LMT and Tween Adventures Summer Camps and the youth summer camps listed above, we are solidifying some more week long summer camps. Find our up-to-date offerings at [CommunityPass.net](https://register.communitypass.net/LowerMakefield)!

Programming will continue to be updated with new and exciting activities and camps. Check our registration website for all classes and programs - <https://register.communitypass.net/LowerMakefield>

PARKS AND RECREATION

ADULT ART CLASSES

Register online with Community Pass: <https://register.communitypass.net/LowerMakefield>

Something for everybody!

COME, RELAX, ENJOY AND DRAW/PAINT WITH A FUN GROUP OF ARTISTS!

MONDAY

WATERCOLOR ART CLASS with Chris
6-Week Series | 10:30 AM

THURSDAY

WATERCOLOR ART CLASS with Chris
6-Week Series | 6:30 PM

FRIDAY

WATERCOLOR ART CLASS with Chris
6-Week in Person Series | 10:30 AM

- You will learn many useful techniques and methods for producing watercolor paintings of your own.
- No previous experience is required. By the end of this course you will be able to finish a watercolor painting with confidence.
- Learn the basics of pictorial composition, people, perspective and many other aspects of ART!
- To analyze painting strategies for executing original artworks and to prepare paintings for exhibition.
- You will be more informed about brush, paint and paper types and what is best for you.
- Learn to paint trees, skies, people, animals and much more!

PICKLEBALL

Lower Makefield Township continues to embrace pickleball and our LMT Pickleball Club! In the last year, we've partnered with Universal Rackets for classes + events, added amenities like the quarterly newsletter, quarterly socials at Makefield Highlands, and periodic members fun days, and we continue to investigate finding more ways for our members to benefit!

Interested in joining or learning more? Sign up at <https://app.courtreserve.com/Online/Portal/Index/11527> and if you need help or have questions, email bonnieg@lmt.org or call 267-789-0806

Membership Pricing:

Pickleball Membership		
Annual Resident	\$120	Per person
Annual Non-Resident	\$150	Per person
Resident Six Month Membership	\$65	Per person
Non- Resident Six Month Membership	\$80	Per person

UPCOMING PICKLEBALL CLINICS:

Thursday Pickleball Clinics:

3:30-5:00p: Intermediate Clinic

5:00-6:30p: Beginner/Advanced Beginner Clinic

Ages: Adult: 18+

Dates: May 15th-June 12th

Location: Memorial Park, Garden of Reflection, 1950 Woodside Road, Yardley Pa

Sunday Pickleball Clinics:

11:30-1:00p: Beginner/Advanced Beginner Clinic

1:00-2:30p: Intermediate Clinic

Ages: Adult: 18+

Dates: May 18th-June 15th

Location: Memorial Park, Garden of Reflection, 1950 Woodside Road, Yardley Pa





2025 POOL MEMBERSHIP INFORMATION

REGISTRATION BEGINS MONDAY, JANUARY 27TH

	FULL PRICE		AUGUST ONLY***	
	Resident**	Non-Resident	Resident**	Non-Resident
Under 1-5/Senior 62+	\$77	\$112	\$46	\$82
Child 6-13	\$102	\$143	\$61	\$97
Individual 14 and older (First Two Adults)	\$214	\$281	\$173	\$235
Individual 14 and older (Each Additional Adult) (Per person)	\$122	\$189	\$87	\$148

Registration

Online Registration: <https://register.communitypass.net/LowerMakefield>

1. Register Online
2. Complete or Update Membership
3. Make Payment in Full

Returning Members

- Login to your existing Community Pass account and register by clicking "Click Here to Get Started" and select "2025 Pool Membership"
- Continue through and click "Finish" when done.
- Do NOT create a new account, for assistance with Login and Password call 267-274-1105.
- Please Note: Returning members will be notified by email if their requirements need updating.

New Members

- Create a new account and then register for the season by clicking "Click Here to Get Started", select "2025 Pool Membership".
- Continue through and click "Finish" when done.
- Complete the membership requirements and make payment.

Membership Requirements

- All members 18+ before 9/1/25: Driver's License/State issued Photo ID – Provide a valid copy.
- All members 18+ before 9/1/25: Signed Legal Disclaimer.
- Children under 18: Birth Certificate/Proof of Legal Guardianship (no passports).
- All members 1+ before 5/24/25: Photo for identification, must be a clear headshot.

Payment

Visa, MasterCard, and Discover can be used for payment when registering online.

TYPE	MEMBERSHIP DEFINITIONS
Child	If registering a child 13 or under, an adult over the age of 18 from the same household will also be required to have a membership
Adult	One person, age 14 and over. All adults must reside in the same household.
Senior	One person, age 62 (born on or before 9/1/63).
August Only	Valid from August 1 through Labor Day and are subject to the same conditions and privileges as full-season memberships but are not eligible for swim team.
Caregiver	A Caregiver can be added to any membership as a non-family member caring for children. Caregivers have no membership privileges; cannot go to The Pool Complex on their own; and cannot bring in any guests. The Caregiver must be 18 years of age or older.

ADDITIONAL INFORMATION

To process your registration and activate your account, for same day entry, your information must be received in person at the Community Center by 11:00 AM.

Refund Policy – Requests must be received in writing and key fobs returned to the Community Center by Friday, May 23, 2025. Refunds will NOT be issued after this date.

Change of Membership – There is an administrative service charge of \$25.00 for switching membership categories. This is in addition to the fee required for the new category of membership.

Returned Check Fee – There is a \$15.00 return check charge.

Lost Key Fob – Replacement fee is \$10.00 per key fob. Please contact the Membership Office, 267-274-1105, immediately if key fob is lost so it can be deactivated.

Key Fobs and Pictures

All pool members who are 1 year and older before May 24, 2025, are required

to obtain and use their Key Fobs to access The Pool Complex.

Individual photos are required and will be verified at the gate upon entry.

Email photos to communitypool@lmt.org, please send individual head shot photos and include name and Family ID #.

Please Note: Children whose pictures were taken in 2022 require new pictures this year.

All adults who became members between 2008 and 2015 are required to update their photo this year.

Swim Team Members

All members must have a pool membership.

If you have any questions, please contact the Membership Office at communitypool@lmt.org or call 267-274-1105. For more information visit www.LMT.org.

continued on next page

PARKS AND RECREATION

ADDITIONAL FEE INFORMATION – FOR POOL MEMBERS ONLY

Guest pass – Guests passes are for guests of members and must always remain with the member.	\$20 per day
Guest pass after 4:00 p.m.	\$12
Senior guest pass 62+	\$10
Guest adult passbook, 10 passes	\$180
Swim Lessons	\$55, first child
Swim Lessons	\$50, each additional child
Private Swim Lesson	\$30 for 1/2 Hour
Semi-Private Lesson	\$20 per person (up to 3)
Pavilion rental – Resident	\$50 for 3 hours (min.), \$20 per hour after that.
Pavilion rental – Non-Resident	\$100 for 3 hours (min.), \$40 per hour after that.
Pavilion rental deposit	\$50, one time, returned upon completion of reservation

It's Hot Out!

Don't Leave Your Pet in the Car!



A car can overheat **even** when the window has been left cracked an inch or two.



Young, overweight or elderly animals, or those with short muzzles or thick or dark-colored coats are **most** at risk for overheating.



Shady spots offer **little** protection on hot days, and move with the sun.



Even if the temperature outside is only 70°, the inside of your car may be as much as 20 degrees hotter!

On an 85° day, it only takes ten minutes for the inside of your car to reach 102°.

Within just 30 minutes, the car's interior can climb from 85° to a scorching 120°.



Many states and local governments have laws that prohibit leaving an animal unattended in a motor vehicle under dangerous conditions, which includes hot days. Your car could be damaged or you could be charged with a crime.

ASPCA

If you see an animal trapped in a car on a hot day, try to locate the owner or call 911! **Stay by the car until assistance arrives.**



SOLAR LIGHTING

an energy saving option for your home

Outdoor solar lights are easy to install and virtually maintenance free. Best of all, using them won't increase your electric bill. Popular home uses for outdoor solar lighting include pathway light sets, wall-mounted lamps, freestanding lamp posts, and security lights.

Outdoor solar lighting systems use solar cells, which convert sunlight into electricity. The electricity is stored in batteries for use at night. Manufacturers most commonly use nickel cadmium, sealed lead acid, and lead acid batteries.

Outdoor solar lighting systems work well in most areas of the United States. However, it is important to consider geographic and site-specific variables when choosing a product. A solar lighting system will work well only as long as the solar cells receive the manufacturer's recommended hours of sunlight.

The "nightly run time" listings on most outdoor solar lighting systems are based on specific sunlight conditions. Outdoor solar lights located in places that receive less sunlight than the solar cells need will operate for fewer hours per night than expected. Nightly run times may also vary depending on how clear the sky is on any given day. Operating times in the winter months may vary as much as 30%–50% unless the solar lighting system has been sized specifically for winter operation. If the solar cells are shaded by landscape features (such as trees and buildings), battery charging and performance will also be affected. Watch for bird droppings, too. Insufficient battery charging will not only affect performance, it also may reduce the life of the battery.

Some solar lighting systems are self-contained units: You only need to place the lights in a sunny location. Others have the lights separate from a solar cell panel, in which case only the panel needs to be placed in a sunny location. Units vary in size from small, glowing pathway markers to pole-mounted patio and high-beam security lights.

Before you buy an outdoor solar lighting system, check with the manufacturer to see if replacement bulbs or batteries are available. Some units do not provide replacement options.



<https://www.energy.gov/energysaver/outdoor-solar-lighting>

**BUCKS COUNTY ELDER LAW**
Henry A. Carpenter II, Esq.
Certified Elder Law Attorney

AREAS OF PRACTICE

- Life Care Planning
- Asset Protection Planning
- Special Needs Planning/Trusts
- Medicaid Planning
- Guardianship
- Estate Administration
- Estate Planning
 - Last Will & Testament
 - Powers of Attorney
 - Living Will/Advance Health Care Directive

Licensed in Pennsylvania and New Jersey
CALL OUR OFFICE TO SCHEDULE YOUR COMPLEMENTARY, NO OBLIGATION, INITIAL CONSULTATION.
Henry A. Carpenter II, Esq.
Certified Elder Law Attorney (CELA)
Master of Laws in Taxation (LL.M)
2020 recipient "Excellent in Elder Law" Award
Chairman Emeritus, Elder Law Section of the Pennsylvania Bar Association

215-493-0727 www.buckscountyelderlaw.com
301 Oxford Valley Rd Suite 101B, Yardley PA 19067
Email: henryc@haciilaw.com



Thanks!

This publication is made available through the generous advertising sponsorship of the businesses listed throughout our newsletter. We wish to encourage your patronage of these establishments; they play a substantial role in the economic vitality of our community.

PARKS AND RECREATION

LOWER MAKEFIELD SENIORS

The Lower Makefield Seniors (LMS) is an organization whose purpose is to promote the educational, physical, cultural, and social well-being of persons 55 years of age or older in a community-based setting. Both Lower Makefield Township residents and non-township residents 55+ are welcome to join. We offer a robust schedule of activities and programs for our members, as well as many other opportunities to become involved. Interested individuals are invited to join us at one of our general membership "Meet & Greet" meetings. (For additional information, see contact details below)

LMS Programs

- Art Classes: Fridays @ 10AM to 12PM (not in summer)
- Book Club: 2nd Wednesday @ 12:45 PM
- Bridge: Duplicate – Wednesdays @ 9AM
- Bridge: Thursdays @ 9AM
- Bridge: Open Seating- Tuesdays @ 12PM
- Bridge: Duplicate – Fridays @ 11:30AM [Partner Required]
- Canasta/Hand & Foot: Wednesdays @ 9AM
- Games Day: Wednesdays @ 9:30 AM
- Line Dancing: Saturdays @ 10AM
- Mah Jongg: Mondays @ 12PM – 3PM
- Mah Jongg: Fridays @ 12:30 PM – 3PM
- Movie: 3rd Saturday of the month @ 1:30 PM
- Pinochle: Tuesdays @ 12:30 PM
- Pinochle: Wednesdays @ 12:30 PM
- Pinochle: Thursdays @ 12:30 PM
- RummiKub: Wednesdays @ 9:30 AM
- Stitch & Chat: Wednesdays @ 10AM to 12PM

LMS Committees

- Meet & Greet
- Membership
- Newsletter
- Publicity
- Sunshine
- Trips



INFORMATION: Can be found using the QR code below or by going to:
<https://www.lmt.org/information/seniors>
You can also email us at:
lowermakefieldsrs@gmail.com or
Call: 267-394-4282



Bucks County Runs On Us!

**KENDERDINE'S**
Heating Oil Delivery
Equipment Sales & Service

Family Owned
& Operated

Amana
Heating & Air Conditioning
AMERICA'S BRAND
FOR COMFORT

- HVAC Installations
- A/C & Heat Pump Systems
- Boilers & Furnaces, Oil & Gas
- Service Contracts for A/C, Heat Pumps, Furnaces, Boilers



215-968-2041 • www.kenderdines.com
500 S State Street • Newtown PA PA.HIC NO. 621059



856.624.3377 - BUCKSCOUNTYWINEWAGON.COM

**WILLOW GROVE
HOP STOP**



856.624.3377 - WGHOPTOP.COM



TOWNSHIP OWNED RECREATIONAL FACILITIES

Community Park 32.7 Acres, 1050 Edgewood Rd

- Pool Complex w/Parking
 - Dedicated 1981
 - Paved Parking, 2 lots with 130 spots each, gravel parking is also available.
 - Olympic Sized Community Pool (lighted), diving area, intermediate and tot sized pools, snack bar, dual slides, diving boards, all pools are heated.
- Kids Kingdom Playground
 - Dedicated in 1992
 - Pavilion is available for Residents to reserve for parties
- Tennis Courts & Basketball Complex
 - 4 lighted community tennis courts
 - 1 lighted basketball court
- Community Softball Field (lighted)
- Nature Trail
- 260 Parking spaces
- Picnic area with restroom facility and pavilion

Leagues: Home of the LMT Swim and Dive Team; Home of PAA

Lower Makefield Township Athletic Complex

36.75 Acres, 1103 Edgewood Rd

- Greg Caiola Baseball Park
- Convertible 50/70 field
- Convertible to 40/60 field
- 145 parking spaces plus additional gravel parking available
- Robert P. Stoddard Sports Complex
- 3, 60' foot fields
- Concession Stand
- 2 Sand Volleyball Courts

Leagues: Home of PAA Baseball

Fred Allan Softball Complex 23 Acres, 1500 Oxford Valley Rd

- Dedicated in 1999
- 3 softball fields, dugouts, water on 3 fields, electric on 2 fields
- Batting Cage
- 2 All-weather Bocce Courts
- Tot play pieces
- Picnic area with concession stand
- Restroom facility and covered pavilion with a floor
- Walking trail/bike path
- Approximately 120 paved parking spots
- Underdrains installed on all three fields in 2014

Macclesfield Park 91.9 Acres, 1000 River Rd

- Front 60 acres dedicated 1989, rear 30 acres dedicated in 1997
- 8 full size multi-purpose fields (6 lighted) for use as regulation soccer football and baseball fields, including one all-weather turf field installed by YMS.
- 2, 90' lighted baseball fields
- 1, 75' lighted baseball field
- 4 sand volleyball courts

- 2 mid-sized soccer fields
- 5 mini soccer fields
- Tot lot play area
- Bike path and exercise stations
- Picnic areas and restrooms
- 2 pavilions, a concession stand, maintenance garage
- Access to the canal towpath
- Approximately 600 parking spaces, paved
 - 400 front lot
 - 200 rear lot

Leagues: Home of the Yardley Makefield Soccer, Lower Makefield Football Association, and Pennsbury Athletic Association

Memorial Park 63.5 Acres, 1950 Woodside Rd

- Purchased 1996
- 9/11 Garden of Reflection
- 2 basketball courts
- 2 sand volleyball courts
- Community Garden Plots
- Restrooms with a covered patio
- 1 skinned softball field
- Secret Garden inclusive playground with ADA parking lot
- Multipurpose field with field goals
- Gaga court
- Pavilion available to rent for LMT Residents
- 1k loop for walking
- Pickle Ball and Tennis Courts

Five Mile Woods 298 Acres, 1305 Big Oak Rd.

- Purchased in 1979
- Nature center
- Ranger office
- Manor house
- 5 miles of nature trails
- Handicap accessible
- Gravel parking for 50 vehicles

LMT Bike Paths 25 Miles

- To view the trail map use this link on Township's website: www.lmt.org

Dog Park 3.5 Acres, 1950 Covington Rd

- Opened June 12, 2018
- Dedicated July 15, 2018
- Maintenance shed
- Real-time scan system
- Cameras
- Multi use water fountain
- 10 Benches
- 10 waste stations
- 2 large trash cans



TOWNSHIP OWNED RECREATIONAL FACILITIES

Community Center 12 Acres, 1550 Oxford Valley Rd

- Opened January 16, 2018 - Dedicated March 12, 2018
- Large multi-purpose room
- 2 Classrooms
- Parks and Recreation Offices
- Small industrial kitchen
- 5,235 square-foot space
- Home of the Lower Makefield Township Seniors
- Home of the Newtown Quilters Guild
- Space available for scheduled programs, scheduled classes, senior programs, camps and lectures

Veterans Square 2.8 Acres, 1660 Edgewood Rd

- Veterans Square Monument
- Tot lot play area
- Picnic area with benches
- Gravel Parking area for 50 cars
- Water fountain

Heacock Meadows

8.2 Acres, Heacock/Bluebird/Covington

- 4.5 Acres of Heacock Meadows Pocket Parks
- Dedicated 1979
- 1 Tot lot
- Basketball Court
- Tennis Court
- 4 Pickleball courts with portable nets

Home of Lower Makefield Township Pickleball Club

Peake Farm

1.69 Acres, Twig Lane

- Tot lot playground

Yardley Hunt 3.1 Acres, Revere/Schulyer

- Schulyer Drive: 4 dedicated tennis courts
- Revere: 3 tennis/ pickle ball courts
- Paved parking areas approximately 12 vehicles at each location

League: Home of Yardley Makefield Tennis

Additional Township Owned Parks and Recreation Property

Makefield Highlands Golf Course

195 Acres, 1418 Woodside Rd

- 18 Hole Golf Course
- Driving Range
- Restaurant
- Outdoor Patio
- Managed by Spirit Golf



Catering is in Full Bloom!

From Mother's Day to graduation, and every baptism and birthday in between. Let us cater your next occasion with a wide variety of items, from cheese platters to sushi platters and so much more. Go to Order Express or talk to our in-store catering coordinator today.

DOWNLOAD THE ORDER EXPRESS APP
Order deli, meals to go, cakes, catering and more right from your mobile device. Available from the app store.



SHOPRITE OF YARDLEY
1603 Big Oak Rd., Yardley • (215) 595-0078

RECREATIONAL OPPORTUNITIES

A wide range of community sports organizations offer Lower Makefield Township residents' recreational opportunities on a year-round basis. Many of these groups are run entirely by volunteers.

For more information, contact the Lower Makefield Township Park & Recreation Office: 267-274-1110.

BASEBALL, SOFTBALL & T-BALL

Pennsbury Athletic Association (PAA)

T-ball, softball, baseball; age 4 to 18

P.O. Box 297, Yardley, PA 19067

215-736-9550

<http://www.paaball.com>

Morrisville Little League (MLL)

M/F, baseball/softball, ages 4 to 16

P.O. Box 255, Morrisville, PA 19067

morrisvillittleleague@gmail.com

www.gomll.org – found their website

Lower Bucks Softball Association

Adult softball league

Pennsbury school district locations

215-750-1109

Leaguelineup.com/welcome.asp?url=lbslsoftball

BASKETBALL

Pennsbury Regional Basketball League (PRBL)

Male/Female Grades K to 11, Travel and instructional

www.prbl.org

www.prblonline.com

Lady Falcons Elite Hoops

Female, grades 2 to 12; biddy ball.

Developmental league with travel and in-house programs

ladyfalconselitehoops@gmail.com

www.league lineup.com/welcome.asp?url=lfehoops

<https://lfehoops.teamsnapsites.com>

Falcons Elite Hoops

Male - K to 12 developmental organization.

Offering opportunities for all skill levels to play in either in house and/or travel leagues. Also offering skill-based training for individuals and teams.

falconselitehoops@gmail.com

<http://www.falconselitehoops.com/>

<http://lfehoops.teamsnapsites.com/>

CAMPS & ENRICHMENT PROGRAMS

Bucks County Community College

Male/Female, ages 4 to adult. Various enrichment programs/camps.

275 Swamp Road, Newtown, PA 18940

215-968-8409

www.bucks.edu/kidsoncampus

Bucks County Parks & Recreation

Male/Female, ages 4 to adult. Various programs.

901 E. Bridgetown Pike

Langhorne, PA 19047

215-757-0571

<https://www.buckscounty.gov/166/Programs-Activities>

Pennsbury School District

Community Services

School district locations

Adult Programs

215-428-4100

<https://www.pennsburysd.org>

FITNESS

YMCA – Morrisville & Fairless Hills

Roller hockey, various programs

100 North Pennsylvania

Morrisville, PA 19067

215-736-8077 or 215-949-3400

<https://ymcabucks.org/>

Newtown Athletic Club

Various indoor sports programs; M/F

215-968-0600

Rt. 413 & Penns Trail

Newtown, PA 18940

FOOTBALL

Lower Makefield Football Association (LMFA)

Ages vary, flag/tackle

P.O. Box 401

Yardley, PA 19067

info@lmfafootball.org

lmfafootball.org

CHEERLEADING

Pennsbury Falcons Cheerleading Association

Sideline and competition cheerleading.

<https://www.pfcacheerleading.com/home>

www.pfcacheer.org

LACROSSE

Lower Bucks Lacrosse League (LBLL)

Lacrosse, instructional & travel. Male/Female, Grades 3 to 8

P.O. Box 861

Yardley, PA 19067

215-914-1100 Ext.4653

<http://lowerbucks lacrosse.org/>

[Lblax.org](http://lblax.org)

RUGBY

Yardley Makefield Rookie Rugby - USA

Coed Clinics grades K-4; Coed Clinics and Games grades 4-8; Summer (Local Clinics & Travel Tournaments) & Fall (Local Clinics & Local Games) Seasons

215-495-7773

ymrookierugby@gmail.com

www.yardleyrugby.com

SOCCER

Yardley Makefield Soccer (YMS)

M/F Ages 4 – Adult; Travel & Intramural

P.O. Box 925

Morrisville, PA 19067

<http://www.ymssoccer.net>

SWIM & DIVE

The Pool at LMT – Swim & Dive Team and Program

Male/female, Ages, 6 – 18. Competitive, recreational, and dive options

Contact through website:

www.lmtswim.com

<https://www.gomotionapp.com/team/reclblmtd/page/home>

Penn Aquatics

Male/female all ages; program at Pennsbury High School field house on Hood Blvd. in Fairless Hills, PA

pennregistrar@pennaquatics.com

www.pennaquatics.com

pennaquatics.com/page/home

TENNIS

Yardley Makefield Tennis

Male/Female, ages vary; clinics, camps, lessons

683 Friar Drive

Yardley, PA 19067

215-295-0558

www.YMTennis.com

PICKLEBALL

Lower Makefield Township Pickleball Meetup

[app.courtreserve.com/Online/Portal/](http://app.courtreserve.com/Online/Portal/Index/11527)

[Index/11527](http://app.courtreserve.com/Online/Portal/Index/11527)

[https://app.courtreserve.com/Online/Portal/](https://app.courtreserve.com/Online/Portal/Index/11527)

[Index/11527](http://app.courtreserve.com/Online/Portal/Index/11527)



HOW TO AVOID A SCAM

Four SIGNS THAT IT'S A SCAM



Information for this article from the Federal Trade Commission website: ftc.gov.

- 1. Scammers PRETEND to be from an organization you know.** Scammers often pretend to be contacting you on behalf of the government. They might use a real name, like the Social Security Administration, the IRS, or Medicare, or make up a name that sounds official. Some pretend to be from a business you know, like a utility company, a tech company, or even a charity asking for donations. They use technology to change the phone number that appears on your caller ID. So the name and number you see might not be real.
- 2. Scammers say there's a PROBLEM or a PRIZE.** They might say you're in trouble with the government. Or you owe money. Or someone in your family had an emergency. Or that there's a virus on your computer. Some scammers say there's a problem with one of your accounts and that you need to verify some information. Others will lie and say you won money in a lottery or sweepstakes but have to pay a fee to get it.
- 3. Scammers PRESSURE you to act immediately.** Scammers want you to act before you have time to think. If you're on the phone, they might tell you not to hang up so you can't check out their story. They might threaten to arrest you, sue you, take away your driver's or business license, or deport you. They might say your computer is about to be corrupted.
- 4. Scammers tell you to PAY in a specific way.** They often insist that you pay by sending money through a money transfer company or by putting money on a gift card and then giving them the number on the back. Some will send you a check (that will later turn out to be fake), tell you to deposit it, and then send them money.

WHAT YOU CAN DO TO AVOID A SCAM

- 1. Block unwanted calls and text messages.** Take steps to block unwanted calls and to filter unwanted text messages.
- 2. Don't give your personal or financial information in response to a request that you didn't expect.** Legitimate organizations won't call, email, or text to ask for your personal information, such as your Social Security, bank account, or credit card numbers. If you get an email or text message from a company you do business with and you think it's real, it's still best not to click on any links. Instead, contact them using a website you know is trustworthy. Or look up their phone number. Don't call a number they gave you or the number from your caller ID.
- 3. Resist the pressure to act immediately.** Legitimate businesses will give you time to make a decision. Anyone who pressures you to pay or give them your personal information is a scammer.
- 4. Know how scammers tell you to pay.** Never pay someone who insists you pay with a gift card or by using a money transfer service. And never deposit a check and send money back to someone.
- 5. Stop and talk to someone you trust.** Before you do anything else, tell someone — a friend, a family member, a neighbor — what happened. Talking about it could help you realize it's a scam.

If you were scammed or think you saw a scam, report it to the Federal Trade Commission at ReportFraud.ftc.gov.



 <p><i>Your love 4 for your pet, deserves a round of a-paws!</i></p> <p>For those times when you can't be there....</p> <p>call TIFFANY'S ANIMAL CARE</p> <p>Call 215.920.0204</p>	<p>DOMESTIC & FARM ANIMAL CARE / SITTING</p> <p>Reliable • Friendly References • Bonded Drop-in Visits & Dog Walker House Sitting</p> <p>Mention this ad for \$5 off your next scheduled visit</p>
---	---



Makefield Highlands

REDEFINING PUBLIC GOLF

You're Always Invited!

Yes, as a resident of Lower Makefield Township you are always invited to enjoy Makefield Highlands Golf Club and Makefield's Public House Restaurant. As a resident you receive discounted golf rates and an increased window to book your tee times in advance. In addition to golf, the

club serves as a superb dining destination, event space for "open to the public" events and private parties. We offer an award-winning driving range; short game area and our PGA teaching professional staff includes some of the best instructors and clinicians in Pennsylvania.



**Watch for our Spring & Summer
Golf Clinics and Camps!**

Visit us online at makefieldhighlandsgolf.com



**Check out all the new courses and
challenging programs in this year's
TOPTRACER RANGE!**



**Some of our
Upcoming Events**

MAY

- 5/3 - **SMOKE & OAK**
- 5/11 - *Mother's Day Specials*
- 5/22 - **TRIVIA**
- 5/30 - **Karaoke**

JUNE

- 6/6 - **MUSIC ON THE DECK ~ CONCERT SERIES**
- 6/15 - **Father's Day Specials**
- 6/20 - **MUSIC ON THE DECK ~ CONCERT SERIES**

JULY

- 7/11 - **MUSIC ON THE DECK ~ CONCERT SERIES**
- 7/25 - **MUSIC ON THE DECK ~ CONCERT SERIES**



Jr. Academy Spring Classes
Sunday, Monday, and Wednesday

LAG (Learning Adult Golf) Spring Clinic
for beginner and intermediate adult golfers

*Both offer course access and
PGA Professional expertise to get you
knowing what and how to practice!*

Contact **Joe Garstka** at joeg@spiritgolf.net to be added to our email list for updates.

For more info go to: makefieldhighlandsgolf.com



Book Your Event at Our Outdoor Venue!

Host Your Gathering, Event or Party at Makefield Highlands!

Overlooking 200 historic acres of our scenic 18 hole championship golf course, Makefield Highlands is the perfect setting from your intimate dinner gatherings to your large special milestone celebrations. Let our event specialists, talented culinary team, and professional hospitality staff handle all the details of your special occasion so you can relax and celebrate with your friends and family.

Celebrations

Weddings	Sports Banquets
Rehearsal Dinners	Retirements
Corporate Events	Birthdays
Baby Showers	Holidays
Bridal Showers	Celebrations of Life
Graduations	Mitzvahs

Plan Your Event Today!
215.321.7000 x107
elisam@spiritgolf.net

Say "I Do" at Makefield Highlands



Historic charm, breathtaking views, and attention to detail await you at Makefield Highlands. Our wedding professionals will assist you every step of the way and guarantee an unforgettable experience with memories that will last a lifetime.

MAKEFIELD HIGHLANDS • 1418 WOODSIDE ROAD • YARDLEY, PA • 215.321.7000

SUMMER WEATHER HAZARDS: *Be Prepared!*

Summer is a time to have fun but it also holds many weather hazards.
Read this important advice from the Farmers' Almanac and the National Weather Service
to help you stay safe from whatever the season throws your way!

When it comes to summer, people tend to think about vacation, outdoor activities, and fun in the sun. And for good reason! The sultry temperatures practically invite you to take a dip in the pool, lake, or ocean. But don't let the sunny days and warm nights fool you. Summer also holds significant weather hazards. For starters, heat waves that can be lengthy and deadly. Lightning deaths are at their peak during the summer. And beach hazards such as rip currents can catch the unprepared. Be sure to take the necessary precautions when enjoying the great outdoors this Summer!

Summer Hazards: Know Your Risk

Being prepared means learning about summer weather hazards such as hurricanes, heat, lightning, rip currents, air quality, and wildfires. Here's what you need to know:

- **Heatwaves** are common across the country during the summer. They are dangerous because the human body cannot cool itself properly when exposed to an extreme combination of heat and humidity.
- In 2018 and 2019, there were 21 **lightning** fatalities.
- The United States Lifesaving Association estimates that more than 100 people each year die in the surf zone waters of the U.S. and that **rip currents** cause the majority of those fatalities. Rip currents are just one of many beach hazards.
- **Wildfires** kill 30 people, destroy 2,800 homes and burn more than 7 million acres, on average, per year.
- **Flash flooding** is the number one killer associated with severe weather.
- **Air pollution** can make it harder for people with asthma and other respiratory diseases to breathe. Children and teens may be more sensitive than adults to the health effects caused by air pollution. According to the EPA, poor air quality is responsible in the U.S. for an estimated 60,000 premature deaths each year.
- You may have only minutes to **find shelter** before a tornado strikes. Practice a family tornado drill at least once a year.
- Protect yourself from extreme heat by **rescheduling outdoor activities** to earlier in the day.
- There is no safe place outside when lightning is in the area. If you hear thunder, you are likely within striking distance of the storm. Just remember, **When Thunder Roars, Go Indoors.**
- Stay safe from rip currents and other beach hazards by only **swimming at a beach with lifeguards** and heed their direction. Learn how to survive a rip current.
- If you live near wildland areas, make sure **your home is fire wise and fire-safe**. Also, determine evacuation routes from your home. Visit **weather.gov** to determine if your area is at risk for dangerous fire weather conditions.
- Whether on foot or in a car, if you encounter flood waters, **Turn Around, Don't Drown!**
- Make sure to check the **Air Quality Index** for your area here. If the air quality is poor, avoid prolonged or extreme exertion outdoors.

Be a Force of Nature

Your action can inspire others. Be a Force of Nature and share how you're working to stay safe from weather hazards this summer.

- **Write a post on Facebook.** Share with your friends and family the preparedness steps you're taking to stay safe this summer.
- **Tweet** that you're prepared with #SummerSafety. Tell us what you're doing to be prepared for summer hazards.
- Create a **Family Communication Plan** so that your loved ones know how to get in touch during an emergency. And let your friends know that they should create a plan also.
- Look for ways to **help your town prepare**, such as volunteering with the American Red Cross or joining a Community Emergency Response Team.
- Register on the **FEMA Preparedness Portal** to learn how to stay safe during disasters.

Take Action

While the weather may be wild, you are not powerless. Prepare for summer hazards with these simple steps:



<https://www.farmersalmanac.com/summer-weather-hazards>

Lightning Safety

Thunder and lightning storms happen all the time. Know what to do to keep you and your family safe when storms strike!

Safety Tips

Outdoor Safety

- » If you can hear thunder, you are within striking distance of lightning. Look for shelter inside a home, large building, or a hard-topped vehicle right away.
- » Do not go under trees for shelter. There is no place outside that is safe during a thunderstorm.
- » Wait at least 30 minutes after hearing the last clap of thunder before leaving your shelter.
- » Stay away from windows and doors. Stay off porches.
- » There is no safe place outside. Places with only a roof on sports fields, golf courses, and picnic areas are not safe during a lightning storm. Small sheds should not be used.
- » If a person is struck by lightning, call 9-1-1. Get medical help right away.

Indoor Safety

Turn off computers. Stay off corded phones, computers, and other things that put you in direct contact with electricity or plumbing. You **can use** a cell or cordless phone.

Do not wash your hands, bathe, shower, do laundry, or wash dishes.



FAST FACTS

Lightning may strike as far as 10 miles from any rain.



Your Source for SAFETY Information

NFPA Public Education Division • 1 Batterymarch Park, Quincy, MA 02169

www.nfpa.org/education ©NFPA 2016

OIL DIVINE

CLEAN BEAUTY AND WELLNESS

Wellness starter set

The Ultimate
Self-Care Gift



Scan me
to learn more

GET IT
FOR FREE

with \$170
purchase



2859 S Eagle Rd, Newtown PA, 18940 (Next to Harvest Grill) 267-796-0842 | OILDIVINE.COM



WORLD ELITE
MARTIAL ARTS

WE MAKE CHAMPIONS!

Kickboxing, Self-defense, Karate for Kids and Adults

Get 1 Week for FREE.

Reserve your first class by calling **267-444-3506**
or email us at grow@worldelitemartialarts.com

Visit us at: 1 Cambridge Ln, Newtown, PA 18940

2-weeks Karate Summer Camp
for kids ages 5-10

Choose your session:

June 23 - July 4, 2025

July 21 - August 1, 2025

August 11 - August 21, 2025

Mon-Fri, 9.00 am - 4.00 pm.

Early Bird Price before April 30: \$350 per week
Regular Price: May 1 - June 20: \$400 per week

Space is limited. First come, first serve!



MY ECO TOYS

SAFER FOR YOUR KIDS, BETTER FOR THE PLANET

**Springtime at
Richboro's Toy Wonderland**

**Get a FREE
toy set**

with \$120 purchase

WHILE SUPPLIES LAST



SCAN TO LEARN MORE



926 2nd Street Pike, Richboro PA, 18954 (Next to Dairy Queen) 215-478-4199 | MYECOTOYS.COM



PICNIC

IN THE PARK

It's Picnic Season! Stock up on everything you need for the perfect outdoor feast—from cheese and fruit to prepared foods. Find it all at McCaffrey's!

Edgewood Village Shopping
635 Heacock Road
Yardley PA 19067
215-493-9616



*Scan to check
out everything
we have to
offer*



Lower Makefield Township
1100 Edgewood Road
Yardley, PA 19067

Presort Standard
U.S. Postage
PAID
Permit No. 550
Lehigh Valley, PA

SUMMER 2025



This Community Newsletter is produced for
LOWER MAKEFIELD TOWNSHIP by Hometown Press
(215) 257-1500 • All rights reserved®

To Place An Ad Call or Email Peggy Kucipak at Hometown Press • 215-262-3617 ♦ peggy.cbn@gmail.com

PLUMBING • HEATING • COOLING • ELECTRICAL • DRAIN CLEANING

McHales
Since 1950

mchales.net 215-600-4859

**Neighborhood
Discount
\$50 Off
Any Service Work**

Restrictions may apply Not to be used with any other
McHales coupon or discount



Tim McHale
President and Resident

MARCOLLA
REALTY

Expect Better

Mention this ad
when buying or
selling a home and
get a free basic pre-
listing inspection
or 1-year home
warranty!*

*Some restrictions apply



267-291-0400
444 S. State St.
Newtown, PA 18940

Your Lower Makefield Experts
MarcollaRealty.com



Wellness Solutions Center
3 Generations and over 60 years of serving
the residents of Bucks County

- Chiropractic Care
- Postural Rehab
- Decompression Therapy
- Massage/Myofascial Therapy
- Nutritional Coaching
- 8 Weeks to Wellness Program



215-968-1661
www.wscenters.com